

**NEW BRAUNFELS NTL** (BAZ)(KBAZ) 4 E UTC-6(-5DT) N29°42.35' W98°02.59'

**SAN ANTONIO**

658 B NOTAM FILE BAZ

H-7B, L-19C

**RWY 13-31:** H6503X100 (ASPH-GRVD) S-30, D-60 MIRL

**RWY 13:** MALS. REIL. PAPI(P4L)—GA 3.0° TCH 50'.

**RWY 31:** PAPI(P4L)—GA 3.0° TCH 50'.

**RWY 17-35:** H5364X100 (ASPH) S-25 MIRL

**RWY 17:** Thld dsplcd 522'.

**RWY 35:** P-line.

**SERVICE:** S4 FUEL 100LL, JET A, A+ L&T Actvt MIRL Rwy 13-31, Rwy 17-35—CTAF.

**AIRPORT REMARKS:** Attended 1300-0100Z±. Birds in/of arpt. 100LL 24 hr self svc. For full serve fuel call 830-221-4290; aft hrs call 830-221-4100. High per mil acct oprg at Randolph AFB AUX (Seguin).

**AIRPORT MANAGER:** 830-221-4290

**WEATHER DATA SOURCES:** ASOS 119.325 (830) 629-7979.

**COMMUNICATIONS:** CTAF 127.05 ATIS 119.325 UNICOM 122.7

Ⓡ SAN ANTONIO APP CON 124.45

Ⓡ SAN ANTONIO DEP CON 128.05

**TOWER** 127.05 (1300-0100Z±) **GND CON** 120.175

**CLNC DEL** 134.75 When BAZ twr clsd.

**CLEARANCE DELIVERY PHONE:** For CD when ATCT is clsd ctc sat Apch at 210-805-5516.

**AIRSPACE:** CLASS D svc 1300-0100Z±; other times CLASS G.

**RADIO AIDS TO NAVIGATION:** NOTAM FILE SAT.

**SAN ANTONIO (VH) (H) VORTACW** 116.8 SAT Chan 115 N29°38.64' W98°27.68' 072° 22.2 NM to fld. 1159/8E.

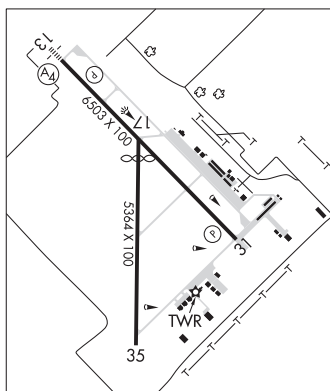
VOR unusable:

018°-022° byd 40 NM

028°-032° byd 40 NM

342°-347° byd 40 NM

355°-002° byd 40 NM blo 18,000'



**NEWMAN** N31°57.11' W106°16.35' NOTAM FILE ABQ.

**EL PASO**

(VL) (H) **VORTACW** 112.4 EWM Chan 71 210° 8.2 NM to Biggs AAF (Fort Bliss). 4041/12E.

H-4L, L-6F

TACAN AZIMUTH unusable:

220°-255° byd 25 NM blo 12,000'

DME unusable:

220°-255° byd 25 NM blo 12,000'

VOR unusable:

001°-005° byd 40 NM

030°-034° byd 40 NM

042°-065° byd 40 NM

066°-084° byd 40 NM blo 18,000'

085°-130° byd 40 NM

243°-260° byd 40 NM

261°-279° byd 40 NM blo 18,000'

280°-290° byd 40 NM

304°-332° byd 40 NM