

TYLER POUNDS RGNL (TYR)(KTYR) 3 W UTC-6(-5DT) N32°21.21' W95°24.18'

DALLAS-FORT WORTH

544 B Class I, ARFF Index B NOTAM FILE TYR

H-61, L-17D

RWY 04-22: H8334X150 (CONC-GRVD) S-120, D-222, 2S-84,

2T-223, 2D-357, 2D/D1-212, C5-342 PCR 640 R/B/W/T HIRL
RWY 04: MALSR. PAPI(P4L)—GA 3.0° TCH 55'.

RWY 22: REIL. PAPI(P4L)—GA 3.0° TCH 54'. Thld dsplcd 600'. Tree.

RWY 13-31: H5198X150 (ASPH-GRVD) S-25, D-40

PCR 150 F/D/X/T HIRL 0.5% up SE

RWY 13: Pole.

RWY 31: VASI(V4L)—GA 3.0° TCH 54'. Road.

RWY 18-36: H4832X150 (ASPH-GRVD) S-109, D-172, 2D-289

PCR 670 F/C/X/T MIRL 0.6% up S

RWY 18: Tree.

RWY 36: Tree.

RUNWAY DECLARED DISTANCE INFORMATION

RWY 04: TORA-8334 TODA-8334 ASDA-7734 LDA-7734

RWY 13: TORA-5198 TODA-5198 ASDA-5198 LDA-5198

RWY 18: TORA-4832 TODA-4832 ASDA-4832 LDA-4832

RWY 22: TORA-8334 TODA-8334 ASDA-8334 LDA-7734

RWY 31: TORA-5198 TODA-5198 ASDA-5198 LDA-5198

RWY 36: TORA-4832 TODA-4832 ASDA-4832 LDA-4832

SERVICE: S4 FUEL 100LL, JET A OX 1, 3 LGT When ATCT clsd actvt

MALSR Rwy 04; REIL Rwy 22; HIRL Rwy 04-22; MIRL Rwy 18-36; twy lghts—CTAF. HIRL Rwy 13-31 preset med instst, to incr instst actvt—CTAF. PAPI Rwy 04 and 22, VASI Rwy 31 opr consly. Rwy 22 VGS1 unusbl byd 9 deg left and right of cntrln.

NOISE: Noise abatement procedures in effect Call 903-590-3048.

AIRPORT REMARKS: Attended 1100-0400Z†. West side passenger terminal ramp access rstd to air carrier. Conditions not monitored btn the hrs of 9:30 PM and 6:30 AM local.

AIRPORT MANAGER: 903-531-2343

WEATHER DATA SOURCES: ASOS (903) 535-9105 LAWRS.

COMMUNICATIONS: CTAF 120.1 ATIS 126.25 UNICOM 122.95

RCD 122.3 (FORT WORTH RADIO)

Ⓡ LONGVIEW APP/DEP CON 128.75 (1200-0400Z†)

Ⓡ FORT WORTH CENTER APP/DEP CON 135.25 (0400-1200Z†)

TOWER 120.1 (1230-0330Z†) GND CON 121.9

CLEARANCE DELIVERY PHONE: For CD if una to ctc on FSS freq, ctc Fort Worth ARTCC at 817-858-7584.

AIRSPACE: CLASS D svc 1230-0330Z†; other times CLASS G.

RADIO AIDS TO NAVIGATION: NOTAM FILE TYR.

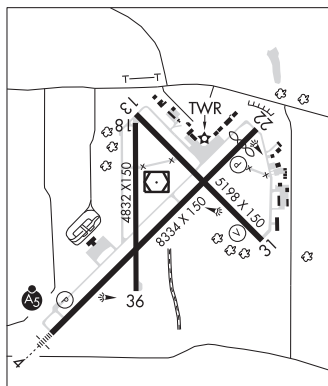
(T) (L) VORW/DME 114.2 TYR Chan 89 N32°21.35' W95°24.21' at fld. 537/6E.

DME unusable:

062°-092° byd 35 NM blo 2,200'

ILS/DME 111.95 I-TYR Chan 56(Y) Rwy 04. Class IE. Unmonitored when ATCT clsd. DME unusable byd 20° left of course.

COMM/NAV/WEATHER REMARKS: Helicopters operating inbound or outbound to/from the downtown hospitals state intention on 123.075.



UPTON CO (See MC CAMEY on page 380)

UTOPIA U66 N29°33.04' W99°31.03'/1278

SAN ANTONIO

AWOS-3T 121.125 (210) 384-5834 AWOS-3T ident associated with arpt Rancho Sabino Grande 6TX2.

L-19B