

WALNUT RIDGE RGNL (ARG)(KARG) 4 NE UTC-6(-5DT) N36°07.48' W90°55.51'

MEMPHIS
H-6J, L-16G
IAP

279 B NOTAM FILE ARG
RWY 04-22: H6001X150 (ASPH) S-40, D-60, 2D-110 MIRL

RWY 04: MALSF.
RWY 22: PAPI(P4L)—GA 3.0° TCH 47'.

RWY 13-31: H5003X150 (CONC) S-40, D-60, 2D-110
RWY 13: Road.
RWY 31: Berm.

RWY 18-36: H5001X150 (CONC) S-40, D-60, 2D-110 MIRL
RWY 18: ODALS. REIL. Road.

SERVICE: S4 FUEL 100LL, JET A LGT ACTVT MALSF Rwy 04; ODALS Rwy 18; REIL Rwy 18; MIRL Rwy 04-22, Rwy 18-36—CTAF.

AIRPORT REMARKS: Attended 1400-2300Z†. If arpt attendant not avbl, call 870-886-5432. Fee chrg unless prior arrangements made. 100LL and Jet A self svc fuel avbl 24 hrs with credit card/full svc avbl 1400-2300Z†. Government contract fuel avbl. Agricultural ops on and invof arpt Apr thru Sep. Migratory birds invof arpt Oct thru Jan.

AIRPORT MANAGER: 870-886-5432

WEATHER DATA SOURCES: AWOS-3PT 126.525 (870) 886-2537.

COMMUNICATIONS: CTAF/UNICOM 122.8

RCO 122.1R 114.5T (JONESBORO RADIO)

RCO 122.5 (JONESBORO RADIO)

Ⓜ **MEMPHIS CENTER APP/DEP CON** 120.075

CLEARANCE DELIVERY PHONE: For CD etc Memphis ARTCC at 901-368-8453/8449.

RADIO AIDS TO NAVIGATION: NOTAM FILE ARG.

(VH) (H) **VORTAC** 114.5 ARG Chan 92 N36°06.60' W90°57.22' 054° 1.6 NM to fld. 265/4E.

TACAN AZIMUTH unusable:

011°-021° byd 15 NM blo 5,000'

VOR unusable:

010°-021° byd 40 NM blo 3,000'

010°-021° byd 55 NM

011°-021° byd 8 NM blo 4,000'

022°-052° byd 40 NM

053°-078° byd 40 NM blo 2,300'

053°-078° byd 64 NM

079°-175° byd 40 NM blo 18,000'

195°-216° byd 40 NM blo 18,000'

217°-278° byd 40 NM blo 3,000'

217°-278° byd 61 NM blo 18,000'

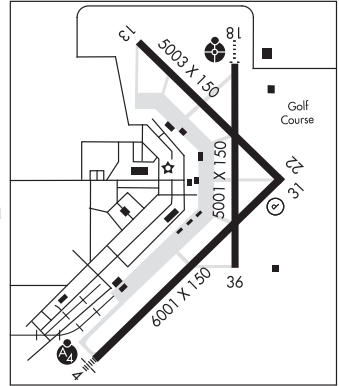
279°-350° byd 40 NM blo 3,400'

279°-350° byd 59 NM

LAWRENCE COUNTY NDB (MHW) 227 TNZ N36°12.42' W90°55.39' 180° 4.9 NM to fld. 262/1E. NDB unmonitored

2300-1300Z†.

LOC 111.1 I-ARG Rwy 18. LOC unmonitored 2300-1300Z†.



WARREN MUNI/JOHN B FRAZER JR FLD (3M9) 3 S UTC-6(-5DT) N33°33.63' W92°05.12'

MEMPHIS
L-18F
IAP

235 B NOTAM FILE JBR

RWY 03-21: H3829X75 (ASPH) S-4 LIRL 1.0% up NE

RWY 03: PAPI(P2L)—GA 3.0° TCH 40'. Trees.

RWY 21: PAPI(P2L)—GA 3.5° TCH 40'. Road.

SERVICE: FUEL 100LL LGT ACTVT LIRL and PAPI Rwy 03-21—CTAF. Rwy 03 PAPI unusbl byd 2 degs left of cntrln. Rwy 21 PAPI unusbl byd 3 degs right and left of cntrln.

AIRPORT REMARKS: Unattended. Self svc fuel avbl 24 hrs with credit card. For services call 870-226-6743 or after hrs 870-226-3703. Deer on and invof arpt. Ctc police 870-226-3703 to clear rwy.

AIRPORT MANAGER: 870-820-9119

COMMUNICATIONS: CTAF 122.9

Ⓜ **MEMPHIS CENTER APP/DEP CON** 135.875

RADIO AIDS TO NAVIGATION: NOTAM FILE JBR.

MONTICELLO (L) **DME** 111.6 MON Chan 53 N33°33.72'

W91°42.93' 270° 18.5 NM to fld. 208.

