

CONTINUED FROM PRECEDING PAGE

AIRSPACE: CLASS C svc ctc APP CON.

RADIO AIDS TO NAVIGATION: NOTAM FILE DRI.

(L) TACAN Chan 105 BAD (115.8) N32°30.20' W93°40.07' at fld. 162/2E.

No NOTAM MP: 1600–1800Z† Wed. mnt dur publ opr hr only

TACAN AZIMUTH unusable:

- 010°–053° byd 30 NM blo 5,000'
- 054°–064° byd 20 NM blo 5,000'
- 065°–104° byd 30 blo 5,000'
- 105°–115° byd 18 NM blo 5,000'
- 116°–277° byd 30 NM blo 3,000'
- 278°–288° byd 30 NM
- 289°–330° byd 30 NM blo 5,000'

TACAN DME unusable:

- 010°–053° byd 30 NM blo 5,000'
- 054°–064° byd 20 NM blo 5,000'
- 065°–104° byd 30 blo 5,000'
- 105°–115° byd 18 NM blo 5,000'
- 116°–277° byd 30 NM blo 3,000'
- 278°–288° byd 30 NM
- 289°–330° byd 30 NM blo 5,000'

ELM GROVE (L) (L) VORTACW 111.2 EMG Chan 49 N32°24.02' W93°35.71' 324° 7.0 NM to fld. 160/7E.

controlled by SHV RAPCON

TACAN unusable:

Byd 30 NM blo 2,000'

VOR unusable:

Byd 30.0NM blo 2,000'

BELCHER (H) (H) VORTACW 117.4 EIC Chan 121 N32°46.28' W93°48.60' 148° 17.8 NM to fld.

190/7E. NOTAM FILE SHV.

ILS 108.9 I–JKC Rwy 15.

ILS 109.9 I–BAD Rwy 33. Unmonitored when ATCT clsd.. No NOTAM MP: 1100–1400Z† Tue, Thu. Mnt dur publ opr hr only. Glide SLOPE unusable for cpd apchs blw 425' MSL.

ASR

COMM/NAV/WEATHER REMARKS: Radar see Terminal FLIP for Radar Minima. Wx DSN 781–3136 or C318–456–3136.

BASTROP

MOREHOUSE MEML (BQP)(KBQP) 2 SE UTC–6(–5DT) N32°45.37' W91°52.84'

MEMPHIS

168 B TPA—1201(1033) NOTAM FILE DRI

L–18F

RWY 16–34: H4002X100 (ASPH) S–15.5 MIRL

IAP

RWY 16: REIL. PAPI(P2L)—GA 3.0° TCH 50'.

RWY 34: REIL. PAPI(P2L)—GA 3.0° TCH 50'.

SERVICE: S2 FUEL 100LL LGT Dusk–Dawn. REIL Rwy 16 and 34;

MIRL Rwy 16–34 preset low intst dusk–dawn, to incr intst

ACTVT—CTAF. PAPI Rwy 16 OTS indef. Rwy 34 REIL OTS indefly.

AIRPORT REMARKS: Attended Mon–Fri 1315–2100Z†. Deer on and invof rwy. Self serve fuel avbl 24 hrs with credit card. Rwy 16 mkgs in poor cond due to fading and mold growth. Rwy 34 cracking, fading, and mold growth on rwy mkgs.

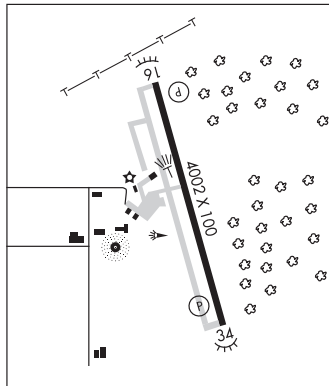
AIRPORT MANAGER: 318-281-2018

WEATHER DATA SOURCES: AWOS–3PT 118.375 (318) 281–1443. Wind unrel.

COMMUNICATIONS: CTAF/UNICOM 122.8

Ⓡ MONROE APP/DEP CON 126.9 (1200–0400Z†)

Ⓡ FORT WORTH CENTER APP/DEP CON 126.325 (0400–1200Z†)



CONTINUED ON NEXT PAGE

CONTINUED FROM PRECEDING PAGE

CLEARANCE DELIVERY PHONE: For CD ctc Monroe Apch at 318-327-5641, if unavbl, ctc Fort Worth ARTCC at 817-858-7584.

RADIO AIDS TO NAVIGATION: NOTAM FILE MLU.

MONROE (VL) (L) VORTACW 117.2 MLU Chan 119 N32°31.01' W92°02.16' 026° 16.3 NM to fld. 77/3E.

VOR unusable:

- 010°-040° byd 40 NM
- 125°-135° byd 40 NM
- 215°-231° byd 40 NM
- 232°-242° byd 40 NM blo 8,000'
- 232°-242° byd 83 NM
- 243°-255° byd 40 NM blo 7,000'
- 243°-255° byd 56 NM
- 256°-267° byd 40 NM blo 18,000'
- 256°-267° byd 45 NM
- 268°-271° byd 40 NM
- 272°-282° byd 40 NM blo 2,000'
- 272°-282° byd 51 NM
- 283°-315° byd 40 NM
- 345°-355° byd 40 NM

DME unusable:

- 097°-131° blo 3,000'
- 097°-131° byd 20 NM

TACAN AZIMUTH unusable:

- 097°-131° blo 3,000'
- 097°-131° byd 20 NM

BASTROP NDB (MHW) 329 BQP N32°45.28' W91°53.01' at fld. 159/3E. NOTAM FILE DRI.

AWOS broadcasted on NDB

**BATON ROUGE METRO, RYAN FLD (BTR)(KBTR) 4 N UTC-6(-5DT) N30°31.98' W91°08.99'**

HOUSTON

70 B LRA ARFF Index—See Remarks NOTAM FILE BTR MON Airport

H-7D, L-21B, 22F

RWY 04L-22R: H7500X150 (CONC-GRVD) S-120, D-170, 2S-175,

IAP, AD

2D-300 PCN 70 R/A/W/T HIRL CL

RWY 04L: RVR-TR Pole.

RWY 22R: MALS. TDZL. PAPI(P4L)—GA 3.0° TCH 56'. RVR-TR Rgt tfc.

RWY 13-31: H7005X150 (ASPH-GRVD) S-120, D-170, 2S-175,

2D-300 PCN 95 F/C/X/T HIRL

RWY 13: MALS. RVR-T Thld dspld 597'. Pole.

RWY 31: MALS. VASI(V4L)—GA 3.0° TCH 64'. RVR-R Thld dspld 314'. Road.

RWY 04R-22L: H3799X75 (ASPH) S-30, D-45 PCN 26 F/C/X/T MIRL

RWY 04R: Rgt tfc.

**RUNWAY DECLARED DISTANCE INFORMATION**

RWY 04L:TORA-7500 TODA-7500 ASDA-7500 LDA-7500

RWY 04R:TORA-3799 TODA-3799 ASDA-3799 LDA-3799

RWY 13: TORA-7004 TODA-7004 ASDA-6317 LDA-5720

RWY 22L:TORA-3799 TODA-3799 ASDA-3799 LDA-3799

RWY 22R:TORA-7500 TODA-7500 ASDA-7500 LDA-7500

RWY 31: TORA-7004 TODA-7004 ASDA-6407 LDA-6094

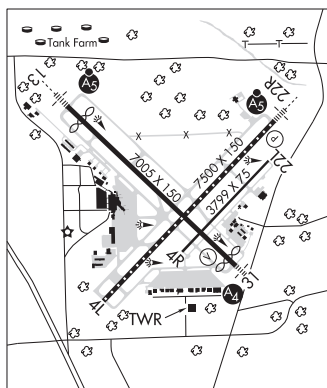
SERVICE: S4 FUEL 100LL, JET A OX 1, 3 LGT ACTVT MALS. Rwy

22R & 13 and MALS Rwy 31—CTAF. When ATCT clsd HIRL Rwy 13-31 & 04L-22R preset low intst; to incr intst ACTVT—CTAF. MIRL Rwy 04R-22L not avbl.

**AIRPORT REMARKS:** Attended 1100-0600Z. Migratory birds on and in vicinity of arpt during months of Mar, Apr, Sep and Oct. Class I ARFF Index C, 24 hrs PPR for unscheduled air carrier ops with more than 30 passenger seats 0600-1100Z, call arpt manager 225-355-2068/0333. When twr clsd use 121.9 to ctc ARFF for emergency request. Rwy 04R-22L not avbl for air carrier ops with more than 30 passenger seats. Rwy 04R-22L and Twy E are similar in appearance. Use caution when exiting Rwy 13-31. Ramp and twy lane adjacent to the commercial air carrier terminal building is limited to commercial air carrier and passenger airtaxi act only. Twy E weight restrictions: single 44,000 lbs, dual 55,000 lbs, dual tandem 93,000 lbs. Twy E, Twy F btn Rwy 04R-22L and AER 31 not avbl for skedd acr ops. Twy F btn Rwy 04-22L and 31 RDGS to 40 ft wid. Dsgnd free pub use prkg for GA acct in the back row of the S ramp.

**AIRPORT MANAGER:** 225-355-0333

**WEATHER DATA SOURCES:** ASOS (225) 354-2138 LLWAS.



CONTINUED ON NEXT PAGE