

GAINESVILLE RGNL (GNV)(KGNV) 3 NE UTC-5(-4DT) N29°41.40' W82°16.31'

JACKSONVILLE

151 B Class I, ARFF Index B NOTAM FILE GNV

H-8H, 12F, L-21D, 24G

RWY 11-29: H7504X150 (ASPH-GRVD) S-118, D-195, 2S-175,

2D-331, 2D/2D2-796 PCR 480 F/B/X/T HIRL 0.6% up W

RWY 11: REIL. PAPI(P4L)—GA 3.0° TCH 54'. RVR-R Trees.

RWY 29: MALSR. PAPI(P4R)—GA 3.0° TCH 55'. RVR-T Trees.

RWY 07-25: H4158X100 (ASPH-GRVD) S-83, D-137, 2S-175,

2D-227 PCR 320 F/B/X/T MIRL 0.5% up SW

RWY 07: PAPI(P4L)—GA 3.0° TCH 44'. Trees.

RWY 25: PAPI(P4L)—GA 3.0° TCH 42'. Trees.

SERVICE: S4 FUEL 100, JET A 0X1, 3 LGT When ATCT clsd, ACTV T

MALSR Rwy 29; MIRL Rwy 07-25; HIRL Rwy 11-29—CTAF.

AIRPORT REMARKS: Attended continuously. Wildlife on and in/ov arpt. High

density migratory birds dur dalgt hrs in/ov all rwsys. Rwy 07-25 acr

NA. Arpt sfc cond not mntd btw 0430-0900Z± dly. Banner towing na

exc 72 hr PPR—amgr. Rwy 29 hldg psn sign at 07-25 right side

misg. Portions of Rwy 07-25 and NE 1000' of Twy A not vsb fm

ATCT; blocked by VORTAC bldg. Rwy 07-25 not avbl for sked acr ops

with more than 9 pax seats or unsked acr at least 31 pax seats. When

ATCT clsd, acft more than 12,500 lbs ctc FBO for prkg instr prior to

exiting Twy A due to ireg pavement strengths—352-335-4681. Rwy

11-29 grvd full length x 130' wide ctr portion. GA ramp lmtd to acft

90,000 lbs max gross tkof wt, dual wheel or blw; others PPR. Rwy 11-29

mrkgs on W end are not std due to mrkgs not

fully removed/ghosting.

AIRPORT MANAGER: 352-373-0249

WEATHER DATA SOURCES: ASOS 127.15 (352) 335-8672.

COMMUNICATIONS: CTAF 119.55 ATIS 127.15 UNICOM 122.95

GATORS RCO 122.2 (GAINESVILLE RADIO)

Ⓡ **JACKSONVILLE APP/DEP CON** 118.175 (10,000' and blw)

TOWER 119.55 (1145-0330Z±) **GND CON** 121.7

CLEARANCE DELIVERY PHONE: For CD if una to ctc on FSS freq, ctc Jacksonville Apch at 904-741-0284.

AIRSPACE: CLASS D svc 1145-0330Z±; other times CLASS E.

RADIO AIDS TO NAVIGATION: NOTAM FILE GNV.

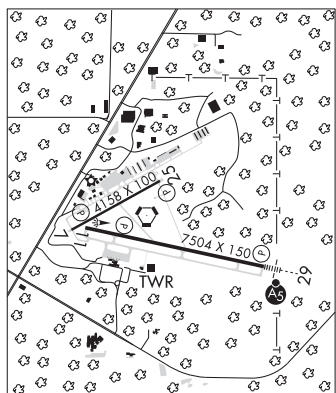
GATORS (L) VORTACW 116.2 GNV Chan 109 N29°41.53' W82°16.38' at fld. 128/4W.

VORTAC unusable:

Byd 25 NM blo 3,000'

WYND5 NDB (MHW/LOM) 269 GN N29°40.20' W82°10.33' 287° 5.3 NM to fld. 114/4W.

ILS 111.3 I-GNV Rwy 29. Class IT. LOM WYND5 NDB.



GATORS N29°41.53' W82°16.38' NOTAM FILE GNV.

JACKSONVILLE

(L) **VORTACW** 116.2 GNV Chan 109 at Gainesville Rgnl. 128/4W.

H-8H, 12F, L-21D, 24G

VORTAC unusable:

Byd 25 NM blo 3,000'

RCO 122.2 (GAINESVILLE RADIO)

GEORGE T LEWIS (See CEDAR KEY on page 90)

GREENVILLE N30°33.08' W83°46.99' NOTAM FILE GNV.

JACKSONVILLE

(L) **VORTAC** 113.65 GEF Chan 83(Y) 345° 21.6 NM to Thomasville Rgnl. 220/1E.

L-21D, 22J

VOR unusable:

181°-013°

RCO 122.1R 113.65T (GAINESVILLE RADIO)

HALIFAX RIVER SPB (See HOLLY HILL on page 110)

HERLONG RECREATIONAL (See JACKSONVILLE on page 118)