

STUART

WITHAM FLD (SUA)(KSUA) 1 SE UTC-5(-4DT) N27°10.90' W80°13.28'

16 B NOTAM FILE MIA

RWY 12-30: H5828X100 (ASPH-GRVD) S-65, D-105, 2D-190

PCN 27 F/B/W/T MIRL

RWY 12: REIL. PAPI(P4L)—GA 3.0° TCH 35'. Thld dspclcd 460'. Trees.

RWY 30: REIL. PAPI(P4L)—GA 3.0° TCH 28'. Tree.

RWY 16-34: H5000X100 (ASPH-GRVD) S-55, D-90, 2D-160

PCN 30 F/B/X/T

RWY 16: Thld dspclcd 336'. Trees.

RWY 34: Thld dspclcd 900'. Trees.

RWY 07-25: H4653X100 (ASPH-GRVD) S-58, D-95, 2D-170

PCN 14 F/B/X/T MIRL

RWY 07: PAPI(P4L)—GA 3.0° TCH 42'. Tower.

RWY 25: PAPI(P4L)—GA 3.0° TCH 44'. Tree.

ARRESTING GEAR/SYSTEM

RWY 12: EMAS

RWY 30: EMAS

SERVICE: S4 FUEL 100LL, JET A LGT After 0300Z± ACTVT REIL Rwy 12 and 30; MIRL Rwy 07-25 and 12-30—CTAF.

NOISE: Noise sensitive areas all quadrants. Noise abatement procedures in effect call amgr 772-221-2374. Stage 1 and 2 jet ops strongly discouraged 0400-1300Z±.

AIRPORT REMARKS: Attended 1100-0300Z±. Birds on and invof arpt. Acft with wingspans exceeding 79' are prohibited from operating on Twy A between Twy C and AER 12 when acft with wingspan exceeding 79' is on apch to land or taking off Rwy 12-30. PPR for acft exceeding rwy wt capacity. Touch and go ops permitted Mon-Sat (excp New Years, Christmas and Thanksgiving) 1400Z± until 2 hrs past SS and are limited to 3 ops per pilot per day. Stop and go ops and intrn tkofs strongly discouraged at all times. PAPI rstd to 7.5 NM west of Rwy 25 due to 1548' MSL twrs within 10° of extended centerline. See Special Notices — Airport VFR Procedures

AIRPORT MANAGER: 772-221-1458

WEATHER DATA SOURCES: AWOS-3 134.475 (772) 692-7399.

COMMUNICATIONS: CTAF 126.6 ATIS 134.475

® **PALM BEACH APP/DEP CON** 132.8 (SOUTH)

STUART TOWER 126.6 (1200-0300Z±) **GND CON** 121.7 **CLNC DEL** 121.025

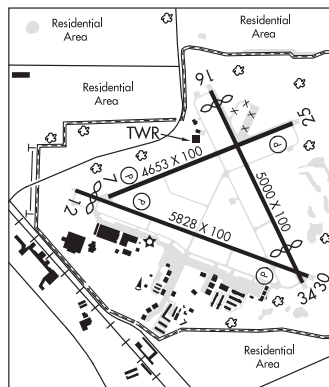
CLEARANCE DELIVERY PHONE: When ATCT clsd, for CD ctc Palm Beach Apch at 561-684-9047.

AIRSPACE: CLASS D svc 1200-0300Z±; other times CLASS G.

RADIO AIDS TO NAVIGATION: NOTAM FILE VRB.

TREASURE (H) (H) VORTACW 117.3 TRV Chan 120 N27°40.70' W80°29.38' 161° 33.0 NM to fld. 19/7W.

TACAN AZIMUTH OTS indef



MIAMI
H-81, L-23C
IAP, AD

SUWANNEE CO (See LIVE OAK on page 128)