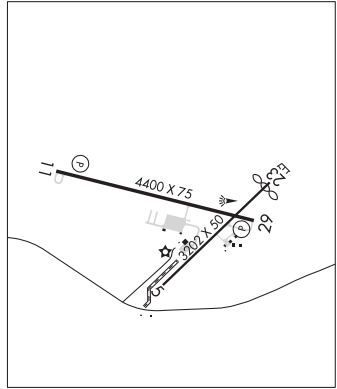


**COCHRAN** (48A) 4 E UTC-5(-4DT) N32°24.04' W83°16.70'  
 377 B NOTAM FILE MCN  
**RWY 11-29:** H4400X75 (ASPH) MIRL 1.0% up NW  
**RWY 11:** PAPI(P2L)—GA 3.25° TCH 45'. Trees.  
**RWY 29:** PAPI(P2L)—GA 3.0° TCH 40'. Trees.  
**RWY 05-23:** H3202X50 (ASPH) S-25 0.3% up NE  
**RWY 05:** Trees.  
**RWY 23:** Thld dsplcd 140'. Trees.  
**RUNWAY DECLARED DISTANCE INFORMATION**  
**RWY 23:** TORA-3202 TODA-3202 ASDA-3202 LDA-3062  
**SERVICE:** S2 FUEL 100LL LGT MIRL Rwy 11-29 preset low dawn-1300, dusk-0200Z†; to actvrt or incrs instst—CTAF.  
**AIRPORT REMARKS:** Attended Mon-Sat 1300-1700Z†. Rwy 05-23 is daylight use only. 24 hr fuel self svc with major credit card. NSTD turnarounds, inadequate separation Rwy 05-23. Rwy 05-23 pavement in poor cond.  
**AIRPORT MANAGER:** 478-291-6582  
**WEATHER DATA SOURCES:** AWOS-3PT 120.975 (478) 271-5897.  
**COMMUNICATIONS:** CTAF/UNICOM 122.8  
 Ⓡ ATLANTA APP/DEP CON 124.2 (1115-0400Z†)  
 ATLANTA CENTER APP/DEP CON 134.5 (0400-1115Z†)  
**CLEARANCE DELIVERY PHONE:** For CD ctc Atlanta Apch at 678-364-6132, when Apch clsd ctc Atlanta ARTCC at 770-210-7692.  
**RADIO AIDS TO NAVIGATION:** NOTAM FILE MCN.  
**VIENNA (VL) (L) VORTAC** 116.5 VNA Chan 112 N32°12.81' W83°29.84' 044° 15.8 NM to fld. 300/1E.  
 DME unusable:  
 014°-024°

ATLANTA  
 L-18J  
 IAP

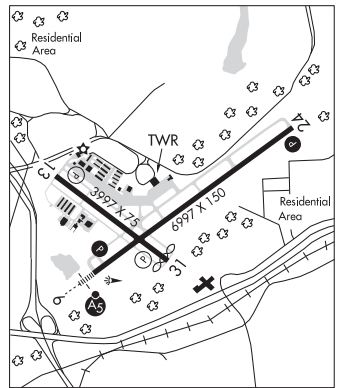


**COFFEE CO** N31°24.29' W82°55.43' NOTAM FILE MCN.  
 NDB (MHW) 390 OWC 043° 5.4 NM to Douglas Muni. 230/6W. NDB unmonitored 2300-1300Z†.

JACKSONVILLE  
 L-24H

**COLUMBUS** (CSG)(KCSG) 3 NE UTC-5(-4DT) N32°30.98' W84°56.33'  
 398 B ARFF Index—See Remarks NOTAM FILE CSG  
**RWY 06-24:** H6997X150 (ASPH-GRVD) D-160, 2D-250  
 PCR 458 F/C/X/T HIRL  
**RWY 06:** MALSR. PAPI(P4L)—GA 2.61° TCH 48'. RVR-T Trees.  
**RWY 24:** REIL. PAPI(P4L)—GA 3.0° TCH 43'. Bldg.  
**RWY 13-31:** H3997X75 (ASPH-PFC) S-12 PCN 12 F/B/W/T MIRL 0.7% up NW  
**RWY 13:** REIL. PAPI(P4L)—GA 3.0° TCH 36'. Tree.  
**RWY 31:** REIL. PAPI(P4L)—GA 3.0° TCH 42'. Thld dsplcd 150'. Pole.  
**RUNWAY DECLARED DISTANCE INFORMATION**  
**RWY 06:** TORA-6997 TODA-6997 ASDA-6997 LDA-6997  
**RWY 13:** TORA-3997 TODA-3997 ASDA-3997 LDA-3907  
**RWY 24:** TORA-6997 TODA-6997 ASDA-6997 LDA-6997  
**RWY 31:** TORA-3997 TODA-3997 ASDA-3997 LDA-3847  
**SERVICE:** S4 FUEL 100LL, JET A LGT All lgts oper 1400-0200Z†.  
 After 0200Z†, ACTVT MALSR Rwy 06; REIL Rwy 24; PAPI Rwy 06 and 24; HIRL Rwy 06-24; MIRL Rwy 13-31; twy lgts; windcone lgts—CTAF. REIL Rwy 13 and Rwy 31; PAPI Rwy 13 and 31 oper consly.  
**AIRPORT REMARKS:** Attended continuously. Rwy 13-31 clsd to acr. Rwy 13-31 not avbl for sked acr opns with more than psgr seats or unsked acr at least 31 psgr seats. Fuel: self serve 100LL avbl 24 hrs. Birds on and invof arpt. Class I, ARFF Index A. Index B aircraft rescue and firefighting equipment avbl. Be alert for Rwy 06 at Twy D int dep instructions with rwy rmng 5085 ft TORA/TODA/ASDA. Be alert for Rwy 06 at Twy F int dep instructions with rwy rmng 5623 ft TORA/TODA/ASDA.  
**AIRPORT MANAGER:** 706-324-2449  
**WEATHER DATA SOURCES:** ASOS (706) 576-4715 LLWAS.  
**COMMUNICATIONS:** CTAF 120.1 ATIS 127.75 UNICOM 122.95  
 RCO 122.2 (MACON RADIO)  
 Ⓡ ATLANTA APP/DEP CON 125.5 (1115-0300Z†) 126.55 (7000' and abv)  
 ATLANTA CENTER APP/DEP CON 120.45 (0300-1115Z†)  
 TOWER 120.1 (1400-0200Z†) GND CON 121.9  
**CLEARANCE DELIVERY PHONE:** For CD if una to ctc on FSS freq, ctc Atlanta Apch at 678-364-6132, when ATCT clsd ctc Atlanta ARTCC at 770-210-7692.

ATLANTA  
 H-9A, 12F, L-18I  
 IAP, AD



## CONTINUED FROM PRECEDING PAGE

AIRSPACE: CLASS D svc 1400–0200Z†; other times CLASS E.

RADIO AIDS TO NAVIGATION: NOTAM FILE CSG.

(L) TACAN Chan 118 CSG (117.1) N32°36.92' W85°01.06' 145° 7.1 NM to fld. 635/1E.

TACAN AZIMUTH unusable:

015°–030°

TACAN DME unusable:

015°–030°

FENIX NDB (LOMW) 355 CS N32°27.12' W85°02.52' 056° 6.5 NM to fld. 355/2W.

ILS 110.3 I–CSG Rwy 06. Class IB. LOM FENIX NDB. Autopilot cpd apch NA blw 900' MSL.

CONEY N31°59.87' W83°51.71' NOTAM FILE MCN.

NDB (MHW) 400 OHY 103° 4.5 NM to Crisp Co–Cordele. 313/6W. NDB unmonitored 2200–1200Z†.

JACKSONVILLE

L–18J

COOK CO (See ADEL on page 190)

## CORDELE

CRISP CO–CORDELE (CKF)(KCKF) 2 NE UTC–5(–4DT) N31°59.33' W83°46.43'

310 B NOTAM FILE MCN

RWY 06–24: H5008X100 (ASPH) S–24

RWY 06: Thld dsplcd 126'. Tree.

RWY 24: Thld dsplcd 140'. Trees. Rgt tfc.

RWY 10–28: H5001X150 (ASPH) S–30, D–45 MIRL

RWY 10: ODALS. REIL. PAPI(P2L)—GA 3.0° TCH 42'. Trees.

RWY 28: REIL. PAPI(P2L)—GA 3.0° TCH 45'. Trees. Rgt tfc.

SERVICE: S4 FUEL 100LL, JET A+ LGT MIRL Rwy 10–28 and PAPI Rwys 10 and 28 preset on low instst dusk–0300Z†; to incr instst and actvt aft 0300Z†—CTAF. Actvt ODALS Rwy 10 and REIL Rwy 10 and 28—CTAF.

AIRPORT REMARKS: Attended Nov–Mar Mon–Sat 1300–2200Z†, Apr–Oct Mon–Sat 1300–2300Z†.

AIRPORT MANAGER: 229-276-2673

WEATHER DATA SOURCES: AWOS–3PT 119.325 (229) 276–2669.

COMMUNICATIONS: CTAF/UNICOM 123.05

Ⓡ JACKSONVILLE CENTER APP/DEP CON 125.75

CLEARANCE DELIVERY PHONE: For CD ctc Jacksonville ARTCC at 904-845-1592.

RADIO AIDS TO NAVIGATION: NOTAM FILE MCN.

VIENNA (VL) (L) VORTAC 116.5 VNA Chan 112 N32°12.81'

W83°29.84' 225° 19.5 NM to fld. 300/1E.

DME unusable:

014°–024°

CONEY NDB (MHW) 400 OHY N31°59.87' W83°51.71' 103° 4.5 NM to fld. 313/6W. NDB unmonitored 2200–1200Z†.

LOC 108.9 I–CKF Rwy 10. Class IA.

JACKSONVILLE

H–9B, 12F, L–18J

IAP

