

DAWSON MUNI (16J) 2 SE UTC-5(-4DT) N31°44.60' W84°25.16'

JACKSONVILLE

332 B NOTAM FILE MCN

L-18J

RWY 14-32: H4507X75 (ASPH) S-16 MIRL

RWY 14: PAPI(P2L)—GA 3.0° TCH 34'. Trees.

RWY 32: PAPI(P2L)—GA 3.0° TCH 48'. Trees.

SERVICE: S2 **FUEL** 100LL **LGT** PAPI Rwy 14 and 32 oper consly. MIRL

Rwy 14-32 preset med instst dusk-0300Z†, aft 0300Z† actvt—CTAF.

AIRPORT REMARKS: Attended Mon-Sat 1300-2200Z†, Sun

1800-2200Z†. Deer on and invof arpt.

AIRPORT MANAGER: 229-995-3787

COMMUNICATIONS: CTAF/UNICOM 122.8

Ⓡ **JACKSONVILLE CENTER APP/DEP CON** 125.75

CLEARANCE DELIVERY PHONE: For CD ctc Jacksonville ARTCC at

904-845-1592.

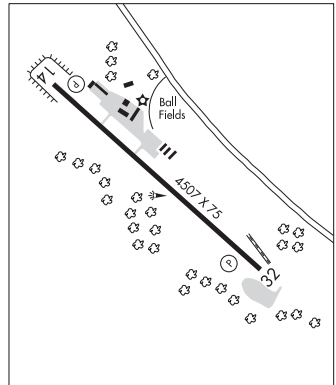
RADIO AIDS TO NAVIGATION: NOTAM FILE ABY.

PECAN (H) (DH) VORW/DME 116.1 PZD Chan 108 N31°39.31'

W84°17.59' 311° 8.3 NM to fld. 292/2W.

DME unusable:

220°-360° byd 30 NM blo 3,000'



DECATUR CO INDUSTRIAL AIR PARK (See BAINBRIDGE on page 201)

DEKALB-PEACHTREE (See ATLANTA on page 196)

DOBBINS ARB (MGE)(KMGE) AFRC (ARNG) 1 S UTC-5(-4DT) N33°54.87' W84°30.85'

ATLANTA

1069 B TPA—See Remarks LRA NOTAM FILE MGE Not insp.

H-9A, 12F, L-18J, A

RWY 11-29: H10002X300 (CONC) PCN 71 R/B/W/T HIRL

DIAP, AD

RWY 11: ALSF1. REIL. PAPI(P4L)—GA 3.0° TCH 55'. RVR-T

RWY 29: SALSF. REIL. PAPI(P4L)—GA 3.0° TCH 58'. RVR-T 0.8% up.

RWY 110-290: H3495X60 (CONC) PCN 45 R/C/W/T HIRL

SERVICE: S4 **FUEL** 100LL, JET A++ **OX** 1, 2 **LGT** For OLS Rwy 11-29 lctn data see Flip AP/1 Supplementary Arpt rmk.

MILITARY—JASU 1(A/MA32A-86) 2(AM32-95) 3(A/M32A-86), 5(ESSEX B809). Base asgn acft have priority. **FUEL** Opr

1100-0500Z† Mon-Thu; 1100-0200Z† Fri; 1300-2100Z† Sat-Sun, exp 1 hr fuel delay, clsd fed hol. A++ +100. LHNIT.

FLUID SP LOX LPOX. LHNIT: Low and high pressure nitrogen servicing). De-Ice: (anti-icing/de-icing/defrosting fluid

(Mil-A-8243). **OIL** O-148-156 SOAP JOAP. **TRAN ALERT** Opr 1300-0400Z† Mon-Fri, 1300-2100Z† Sat-Sun, clsd fed

hol. Lavatory svc rqr 24 hr PN. De-Ice svc on Trans Ramp and C130 Ramp only with 24 hr PN.

MILITARY REMARKS: Attended 1300-0400Z† Mon-Fri, 1300-2100Z† Sat Sun, clsd fed hol. **RSTD** LM: PPR for use of parking

ramps or fac, C800-825-6083. PPR ctc AMOPS at DSN 625-4903, C678-655-5106. Act rstd during Bird Watch

cond Moderate (tkof/lgd perms when dep/arr route avoid indent bird activity, no lcl IFR/VFR tfc pat actf) and Severe

(tkof/lgd proh without 94th OG/CC apvl), ctc AMOPS for current Bird Watch cond. Hot cargo pad rqr 48 hr PN for use.

Hazardous cargo rstd to C-130 or smaller acft. Do not trans on HF without twr apvl. Ctc AMOPS 20 min prior ldg to

confirm PPR and svcg/load. To park AF side PPR, DSN 625-4903. Assault Ldg Zone local use only. PPR only coord/issued

30 days in advance. **CAUTION** Rwy 11-29, when RSC is wet, standing water/ponding greater than or equal to 1/2' inch

occurs approximately 50' from rwy edges. **TFC PAT** TPA—Ovhd, enter initial at 3500 ft, dsnd to 2600 ft, lvl brk at rwy

thld. **MISC** RSRs applied to base asgn acft only; std USAF RSRs not applicable. Rwy 11-29 and VEDA ALZ clsd last Sat

of each month for maint 1300-2100Z†. Afltd mgmt and Comd Post do not issue or store COMSEC. For storage of small

Non-COMSEC classified, 24 hour PN rqr, ctc Comd Post at DSN 625-5106, C678-655-5106, Mon-Fri, 1100-1500Z†,

Sat-Sun, unit trng wkend only 1100-2000Z†. Afltd mgmt email 940GOPS@us.af.mil. Rwy 29 non-std apch lights. **RWY**

Rwy and VEDA ALZ not grooved. Rwy 11-29 overruns first 300' asp, remaining 700' loose gravel. **ARNG** Aircrews

desiring to visit the Georgia ARNG or AASF#2, must land/park at Clay NG ramp, 24 hr PPR req, ctc DSN 753-3500,

C678-569-3500. Svc lmttd tntst prkg avbl. **CSTMS/AG/IMG** Svc req 24hr PN, ctc AMOPS for PPR at DSN 625-4903,

C678-655-4903.

COMMUNICATIONS: ATIS 269.5 (1200-0400Z†) PTD 139.3 372.2

Ⓡ **ATLANTA APP/DEP CON** 121.0 268.7

TOWER 120.225 120.75 370.875 (1200-0400Z†) **GND CON** 125.3 275.8 **GCA** 120.225 (Svcs unavbl on non-unit trng

wkend.)

94AW COMD POST (DAPPER DAN) 322.9 **PMSV METRO** 274.75 (Full svc avbl 1100-0400Z†, DSN 625-5190. OT ctc 26th

OWS DSN 331-2651, COMM 318-529-2604. 274.75)

ARNG OPS 34.4

CLEARANCE DELIVERY PHONE: For CD when ATCT clsd, ctc Atlanta Apch at 678-364-6132.

AIRSPACE: CLASS D svc 1200-0400Z†; other times CLASS G.

CONTINUED ON NEXT PAGE

CONTINUED FROM PRECEDING PAGE

RADIO AIDS TO NAVIGATION: NOTAM FILE PDK.

PEACHTREE (L) DME 116.6 PDK Chan 113 N33°52.54' W84°17.93' 282° 11.0 NM to fld. 971.

(T) TACAN Chan 77 DOB (113.0) N33°54.88' W84°30.44' at fld. 1009/3W. NOTAM FILE MCN.

No NOTAM MP: 1100-1500Z† Thu

TACAN unusable:

070°-078° byd 18 NM

145°-265° byd 11 NM

253°-256° byd 8 NM

320°-325° byd 12NM

ILS 109.7 I-DJR Rwy 11. Class IE.

ILS 111.35 I-VRW Rwy 29. Class IT. Glideslope unuseable byd 4° right of course. Autopilot cpd apch NA blw 1,800' MSL.

ASR (1200-0400Z†)

COMM/NAV/WEATHER REMARKS: Radar see Terminal FLIP for Radar Minima.

DONALSONVILLE MUNI (17J) 1 S UTC-5(-4DT) N31°00.39' W84°52.66'

JACKSONVILLE

147 B NOTAM FILE MCN

H-9A, 12F, L-21D, 22I

RWY 01-19: H5512X100 (ASPH) S-20 MIRL 0.3% up N

IAP

RWY 01: PAPI(P2L)—GA 3.0° TCH 26'. Trees.

RWY 19: PAPI(P2L)—GA 3.0° TCH 46'. Trees.

SERVICE: FUEL 100LL LGT ACTVT MIRL Rwy 01-19—CTAF. PAPI Rwy 01 and 19 opr consly dusk-0400Z†, after 0400Z†—CTAF.

AIRPORT REMARKS: Attended 1300-2200Z†. Fuel 24 hr credit card svc avbl.

AIRPORT MANAGER: 229-524-2118

WEATHER DATA SOURCES: AWOS-3PT 119.675 (229) 524-0001.

COMMUNICATIONS: CTAF 122.9

Ⓡ CAIRNS APP/DEP CON 125.4 (1200-0500Z† Sun-Mon, 24 hrs Tue-Sat), other times ctc

Ⓡ JACKSONVILLE CENTER APP/DEP CON 134.3

CLEARANCE DELIVERY PHONE: For CD ctc Cairns Apch at 334-255-8402, when Apch clsd ctc Jacksonville ARTCC at 904-845-1592.

RADIO AIDS TO NAVIGATION: NOTAM FILE MAI.

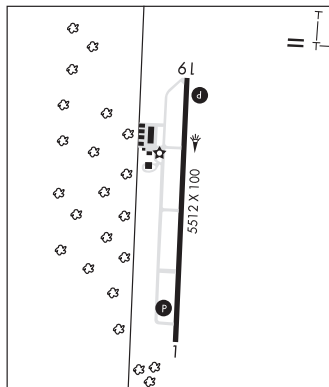
MARIANNA (L) (L) VORTAC 114.0 MAI Chan 87 N30°47.17'

W85°07.47' 044° 18.3 NM to fld. 128/OE.

VORTAC unusable:

261°-276° byd 25 NM blo 3,000'

346°-061° byd 30 NM blo 2,000'



DOUGLAS MUNI (DQH)(KDQH) 2 S UTC-5(-4DT) N31°28.60' W82°51.63'

JACKSONVILLE

257 B NOTAM FILE MCN

H-9B, 12F, L-24H

RWY 04-22: H6000X100 (ASPH) S-26 PCN 27 F/C/X/T MIRL

IAP

RWY 04: MALSR. PAPI(P2L)—GA 3.0° TCH 52'. Trees.

RWY 22: PAPI(P2L)—GA 2.5° TCH 27'. Trees.

SERVICE: S2 FUEL 100LL, JET A+ LGT ACTIVATE MALSR Rwy 04; PAPI Rwy 04 and Rwy 22; MIRL Rwy 04-22—CTAF.

AIRPORT REMARKS: Attended Mon-Fri 1300-2200Z†.

AIRPORT MANAGER: 912-384-1409

WEATHER DATA SOURCES: AWOS-3 119.075 (912) 383-7258.

COMMUNICATIONS: CTAF/UNICOM 122.8

Ⓡ JACKSONVILLE CENTER APP/DEP CON 127.575

CLEARANCE DELIVERY PHONE: For CD ctc Jacksonville ARTCC at 904-845-1592.

RADIO AIDS TO NAVIGATION: NOTAM FILE MCN.

COFFEE COUNTY NDB (MHW) 390 OWC N31°24.29'

W82°55.43' 043° 5.4 NM to fld. 230/6W. NDB unmonitored 2300-1300Z†.

ALMA (H) TACAN Chan 98 AMG (115.1) N31°32.19'

W82°30.49' 259° 18.4 NM to fld. 194/OE. NOTAM FILE

AMG. tac unmonitored 0300-1100Z†.

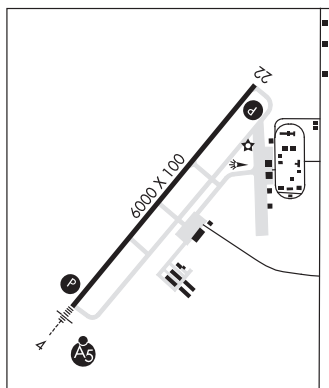
TACAN AZ unusable:

Blw 3,000'

TACAN DME unusable:

Blw 3,000'

ILS 108.7 I-DQH Rwy 04. Class IA.



DR C P SAVAGE SR (See MONTEZUMA on page 233)