

**BOWLING GREEN—WARREN CO RGNL** (BWG)(KBWG) 2 SE UTC-6(-5DT) N36°57.87'

ST LOUIS

W86°25.18'

H-5E, 9A, L-16J

547 B ARFF Index—See Remarks NOTAM FILE BWG

IAP

**RWY 03-21:** H6501X150 (ASPH) S-120, D-221, 2D-358

PCR 560 F/C/X/T HIRL 0.4% up SW

**RWY 03:** REIL PAPI(P4L)—GA 3.0° TCH 43'.**RWY 21:** REIL PAPI(P4L)—GA 3.0° TCH 54'.**RWY 12-30:** H3956X150 (ASPH) S-25.5, D-40 PCN 9 F/C/X/T MIRL**RWY 30:** Thld dspclcd 349'.**RUNWAY DECLARED DISTANCE INFORMATION****RWY 03:** TORA-6500 TODA-6500 ASDA-6500 LDA-6500**RWY 21:** TORA-6500 TODA-6500 ASDA-6500 LDA-6500**SERVICE:** S4 FUEL 100LL, JET A LGT Actvt REIL Rwy 03, 21; PAPI Rwy 03, 21; HIRL Rwy 03-21—CTAF.**AIRPORT REMARKS:** Attended continuously. Birds on and invof arpt. Class IV, ARFF Index A. Ops with more than 30 pax seats 24 hr PPR—Amgr. Rwy 12-30 not avbl for sked acr ops more than 9 pax seats or unsked acr at least 31 pax seats. Rwy 12-30 longl and transverse cracking, uneven sfc.**AIRPORT MANAGER:** 270-842-1101**WEATHER DATA SOURCES:** ASOS 127.825 (270) 843-8136.**COMMUNICATIONS:** CTAF/UNICOM 123.0

RCO 122.2 (LOUISVILLE RADIO)

Ⓡ MEMPHIS CENTER APP/DEP CON 133.85

**CLEARANCE DELIVERY PHONE:** For CD ctc Memphis ARTCC at 901-368-8453/8449.**AIRSPACE:** CLASS E.**RADIO AIDS TO NAVIGATION:** NOTAM FILE BWG.**NOORA NDB (LOMW)** 236 BW N36°52.80' W86°28.90' 034° 5.9 NM to fld. 613/4W.**(DH) DME** 113.35 BWG Chan 80(Y) N36°57.87' W86°25.40' at fld. 528.

DME unusable:

001°-040° byd 10 NM blo 18,000'

041°-100° byd 10 NM blo 5,000'

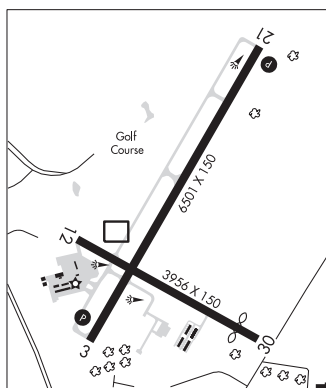
101°-180° byd 10 NM blo 11,000'

181°-220° byd 10 NM

221°-240° byd 10 NM blo 10,000'

241°-255° byd 10 NM

256°-360° byd 10 NM blo 11,000'

**ILS** 108.75 I-BWG Rwy 03. Class IB. LOM NOORA NDB. Glideslope unusable within 0.6 NM blw 762'; unusable byd 6° left of course and byd 6° right of course.**COMM/NAV/WEATHER REMARKS:** CNL IFR — Louisville FSS 122.2.**BOWLING GREEN** N36°57.87' W86°25.40' NOTAM FILE BWG.

ST LOUIS

**(DH) DME** 113.35 BWG Chan 80(Y) at Bowling Green—Warren Co Rgnl. 528.

H-5E, 6J, 9A, L-16J

DME unusable:

001°-040° byd 10 NM blo 18,000'

041°-100° byd 10 NM blo 5,000'

101°-180° byd 10 NM blo 11,000'

181°-220° byd 10 NM

221°-240° byd 10 NM blo 10,000'

241°-255° byd 10 NM

256°-360° byd 10 NM blo 11,000'

RCO 122.2 (LOUISVILLE RADIO)

**BOWMAN FLD** (See LOUISVILLE on page 276)**BRECKINRIDGE CO** (See HARDINSBURG on page 268)