

CAPITAL CITY (See FRANKFORT on page 265)

CENTRAL CITY N37°22.95' W87°15.82' NOTAM FILE LOU.
(L) DME 109.8 CCT Chan 35 256° 6.6 NM to Madisonville Rgnl. 452.

ST LOUIS
L-161

CENTRAL KENTUCKY RGNL (See RICHMOND on page 286)

CINCINNATI/NORTHERN KENTUCKY INTL (See COVINGTON on page 261)

COLUMBIA-ADAIR CO (I96) 2 SW UTC-6(-5DT) N37°05.12' W85°20.83'
818 B NOTAM FILE LOU
RWY 08-26: H2600X60 (ASPH) S-12 MIRL
RWY 08: PAPI(P2L)—GA 4.0° TCH 40'.
RWY 26: PAPI(P2R)—GA 4.0° TCH 34'. Trees.
SERVICE: FUEL 100LL LGT Actvt PAPI Rwy 08 & Rwy 26; MIRL Rwy 08-26—CTAF.
AIRPORT REMARKS: Unatndd. 24 hr credit card svc avbl for fuel.
AIRPORT MANAGER: (270) 634-0733
COMMUNICATIONS: CTAF/UNICOM 122.8
CLEARANCE DELIVERY PHONE: For CD ctc Indianapolis ARTCC at 317-247-2411.

ST LOUIS

COVINGTON

CINCINNATI/NORTHERN KENTUCKY INTL (CVG)(KCVG) 8 SW UTC-5(-4DT) N39°02.93'
W84°40.07'

CINCINNATI
H-106, L-26F, 27E
IAP, AD

896 B LRA ARFF Index—See Remarks NOTAM FILE CVG
RWY 09-27: H12001X150 (ASPH-CONC-GRVD) S-120, D-250, 2S-175, 2D-550, 2D/2D2-875 PCN 101R/B/W/T HIRL CL
RWY 09: MALS.R. TDZL. PAPI(P4L)—GA 3.0° TCH 70'. RVR-TR 0.3% down.
RWY 27: MALS.R. PAPI(P4L)—GA 3.0° TCH 67'. RVR-TR
RWY 18C-36C: H11000X150 (ASPH-CONC-GRVD) S-120, D-250, 2S-175, 2D-550, 2D/2D2-875 PCN 112F/C/W/T HIRL CL
RWY 18C: MALS.R. TDZL. PAPI(P4R)—GA 3.0° TCH 71'. RVR-TMR
RWY 36C: ALSF2. TDZL. PAPI(P4L)—GA 3.0° TCH 77'. RVR-TMR 0.6% up.
RWY 18L-36R: H10000X150 (CONC-GRVD) S-120, D-250, 2S-175, 2D-550, 2D/2D2-875 PCN 127R/B/W/T HIRL CL
RWY 18L: MALS.R. TDZL. PAPI(P4L)—GA 3.0° TCH 71'. RVR-TMR
RWY 36R: ALSF2. TDZL. PAPI(P4R)—GA 3.0° TCH 70'. RVR-TMR
RWY 18R-36L: H8000X150 (CONC-GRVD) S-120, D-250, 2D-550, 2D/2D2-875 PCN 170R/B/W/T HIRL CL
RWY 18R: ALSF2. TDZL. RVR-TMR
RWY 36L: ALSF2. TDZL. RVR-TMR

RUNWAY DECLARED DISTANCE INFORMATION

RWY 09: TORA-12000 TODA-12000 ASDA-11640 LDA-11640
RWY 27: TORA-12000 TODA-12000 ASDA-12000 LDA-12000

SERVICE: S4 FUEL 100LL, JET A

NOISE: Noise sens area N & S of arpt; rwy asgn 0300-1200Z± based on noise abatement. Successive or simul dep fm Rwy 18L, 18C, 36L, 36C & 36R apvd with course dvrg bgn no further than 2 mi fm EOR due to noise abatement. NOTE: See Special Notices—NOISE ABATEMENT PROCEDURES Covington, KY, Cincinnati/Northern Kentucky Intl Airport (CVG).

AIRPORT REMARKS: Attended continuously. Birds on and invof the arpt. Twys rstrd to 15 mph or less with wingspan 214' or more. Rwy 09-27 W 4200' and E 750' conc; remainder asph overlay. Flight Notification Service (ADCUS) avbl. Class I, ARFF Index C. ARFF Index D/E avbl upon req. Rwy 18R-36L clsd to air carrier act wingspan more than 140 ft. ASSC in use. Operate transponders with altitude reporting mode and ADS-B (if equipped) enabled on all airport surfaces.

AIRPORT MANAGER: 859-767-3151

WEATHER DATA SOURCES: ASOS 134.375 (859) 767-8210. TDWR.

COMMUNICATIONS: D-ATIS ARR 134.375 D-ATIS DEP 135.3 UNICOM 122.95

Ⓜ APP CON 119.7 (090°-269°) 123.875 (270°-089°)

TOWER 118.3 (Rwy 09-27 and Rwy 18C-36C) 118.975 (Rwy 18L-36R) 133.325 (Rwy 18R-36L)

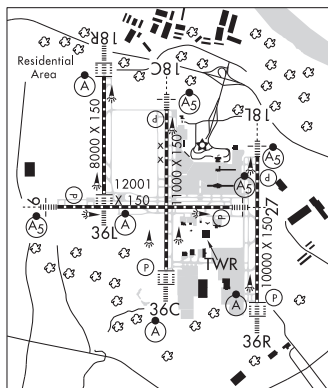
GND CON 121.7 CLNC DEL 127.175

Ⓜ DEP CON 128.7 (181°-360°) 126.65 (001°-180°)

RAMP CTL 130.90 (Ramp 1N / 1S Txl & Ramp 2N / 2S Txl) 130.375 (Ramp 3 Txl & N Txl) 129.475 (DHL Ramp) 130.5 (AMZ Ramp Ctl)

CPDLC (LOGON KUSA)

PDC



CONTINUED ON NEXT PAGE

SE, 20 FEB 2025 to 17 APR 2025

CONTINUED FROM PRECEDING PAGE

AIRSPACE: CLASS B See VFR Terminal Area Chart.

RADIO AIDS TO NAVIGATION: NOTAM FILE CVG.

(L) (L) VORTACW 117.3 CVG Chan 120 N39°00.96' W84°42.20' 044° 2.6 NM to fld. 878/4W.

ILS/DME 111.9 I-URN Chan 56 Rwy 09. Class ID.

ILS/DME 111.55 I-SIC Chan 52(Y) Rwy 18C. Class IIE.

ILS/DME 110.15 I-CIZ Chan 38(Y) Rwy 18L. Class IA. LOC unusable byd 25° left of course.

ILS/DME 110.75 I-CJN Chan 44(Y) Rwy 18R. Class IIE.

ILS 108.7 I-JDP Rwy 27. Class IIE. LOC unusable byd 20° right of course.

ILS/DME 109.9 I-CVG Chan 36 Rwy 36C. Class IIIE.

ILS/DME 110.75 I-VAC Chan 44(Y) Rwy 36L. Class IIE.

ILS/DME 110.35 I-EEL Chan 40(Y) Rwy 36R. Class IIIE.

CUMBERLAND RIVER N36°59.78' W84°40.87' NOTAM FILE LOU.
NDB (MHW) 388 CDX 048° 4.7 NM to Lake Cumberland Rgnl. 958/5W. NDB unmonitored.

CINCINNATI
L-26F

CUNNINGHAM N37°00.52' W88°50.21' NOTAM FILE PAH.
(VL) (L) VORW/DME 113.1 CNG Chan 78 042° 4.4 NM to Barkley Rgnl. 485/3E.

ST LOUIS
L-16H

VOR unusable:

000°-010° byd 40 NM
056°-066° byd 40 NM
167°-181° byd 40 NM
199°-222° byd 40 NM
227°-245° byd 40 NM
248°-258° byd 40 NM
260°-275° byd 40 NM
289°-318° byd 40 NM
320°-330° byd 30 NM blo 3,000'
321°-332° byd 40 NM

CYNTHIANA-HARRISON CO (Ø18) 2 S UTC-5(-4DT) N38°21.97' W84°17.00'
721 B NOTAM FILE LOU

CINCINNATI
L-26F, 27E
IAP

RWY 11-29: H3850X75 (ASPH) S-16, D-25 MIRL

RWY 11: REIL. PAPI(P2L)—GA 4.0° TCH 41'. Railroad.

RWY 29: REIL. PAPI(P2L)—GA 4.0° TCH 50'. Thld dsplcd 1094'. Trees.

RUNWAY DECLARED DISTANCE INFORMATION

RWY 11: TORA-2757 TODA-3852 ASDA-3852 LDA-3852

RWY 29: TORA-3852 TODA-3852 ASDA-3852 LDA-2757

SERVICE: S2 FUEL 100LL LGT Actvt REIL Rwy 11 & 29; PAPI Rwy 11 & 29; MIRL Rwy 11-29—CTAF.

AIRPORT REMARKS: Attended 1300Z±-dusk. Fuel avbl 24/7 with credit card.

AIRPORT MANAGER: 859-234-8477

COMMUNICATIONS: CTAF/UNICOM 122.8

® LEXINGTON APP/DEP CON 120.15 (040°-220°) 120.75 (221°-039°)

CLEARANCE DELIVERY PHONE: For CD ctc Lexington Apch at 859-514-7890.

RADIO AIDS TO NAVIGATION: NOTAM FILE LOU.

FALMOUTH (H) (DH) VORW/DME 117.0 FLM Chan 117 N38°38.97' W84°18.64' 180° 17.0 NM to fld. 809/4W.

