

FAYETTEVILLE

FAYETTEVILLE RGNL/GRANNIS FLD (FAY)(KFAY) 3 S UTC-5(-4DT) N34°59.47'

CHARLOTTE
H-9C, 12H, L-35A, 36F
IAP, AD

W78°52.82'

189 B Class I, ARFF Index B NOTAM FILE FAY

RWY 04-22: H7709X150 (ASPH-GRVD) S-109, D-178, 2S-175,
2D-321 PCN 42 F/A/X/T HIRL 0.3% up SW

RWY 04: MALSR. PAPI(P4R)—GA 3.13° TCH 47'. RVR-T Thld dsplcd
598'.

RWY 22: REIL. PAPI(P4L)—GA 3.0° TCH 48'. RVR-R Thld dsplcd
303'.

RWY 10-28: H4801X150 (ASPH) S-53, D-75 PCN 17 F/A/X/T MIRL

RWY 10: REIL. Trees.

RWY 28: REIL. PAPI(P4L)—GA 3.0° TCH 36'. Trees.

RUNWAY DECLARED DISTANCE INFORMATION

RWY 04: TORA-7709 TODA-7709 ASDA-7007 LDA-6508

RWY 22: TORA-7709 TODA-7709 ASDA-6715 LDA-6413

SERVICE: S4 FUEL 100LL, JET A

AIRPORT REMARKS: Attended 1100-0500Z. CLOSED to all mil acft over
17,000 lbs for air carrier ramp ops exc 24 hr PPR. Call arpt mgr
910-433-1160, Mon-Fri. Rwy 04-22 non-std safety area due to
terrain features on east side of rwy, btwn Twys B and D. Major power
plant repairs avbl for piston engines only.

AIRPORT MANAGER: 910-433-1625

WEATHER DATA SOURCES: ASOS 121.25 (910) 484-1546. LAWRS. LLWAS.

COMMUNICATIONS: ATIS 121.25 UNICOM 122.95

APP/DEP CON 125.175 321°-060° 127.8 231°-320° 133.0 61°-230°

TOWER 118.3 GND CON 121.7

AIRSPACE: CLASS C svc ctc APP CON.

RADIO AIDS TO NAVIGATION: NOTAM FILE FAY.

(L) (L) VORW/DME 114.85 FAY Chan 95(Y) N34°59.13' W78°52.50' at fld. 187/4W.

VOR unusable:

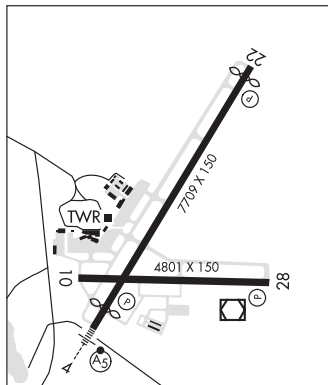
058°-068° blo 4,000'

090°-100°

DME unusable:

090°-100°

ILS/DME 110.5 I-GRA Chan 42 Rwy 04. Class IB. Glideslope unusable byd 3° right of course.



GRAYS CREEK (2GC) 9 S UTC-5(-4DT) N34°53.62' W78°50.61'

CHARLOTTE
L-35A, 36F

160 NOTAM FILE RDU

RWY 17-35: H3500X30 (ASPH) S-8 LIRL(NSTD)

RWY 17: Trees.

RWY 35: Thld dsplcd 350'. Tree.

SERVICE: S4 FUEL 100LL LGT For LIRL Rwy 17-35 call

910-483-4114. Rwy 17-35 NSTD LIRL first 350' Rwy 35 not lgtd.

Rwy 17-35 lgtd thld relctd 350', 3150' of Rwy 17-35 usable at ngt.

Rwy 17 NSTD end lgts displ 122' from end.

AIRPORT REMARKS: Attended Mon-Fri 1300-2200Z. Wkends by
appointment only call 910-286-3435. Taxi on the grass apron at a
slow speed due to uneven sod sfc. Exercise caution with night landing
due to NSTD lighting offset from pavement giving perception rwy wider.

AIRPORT MANAGER: 910-286-3435

COMMUNICATIONS: CTAF 122.9

CLEARANCE DELIVERY PHONE: For CD ctc Washington ARTCC at
703-771-3587.

RADIO AIDS TO NAVIGATION: NOTAM FILE FAY.

FAYETTEVILLE (L) (L) VORW/DME 114.85 FAY Chan 95(Y)

N34°59.13' W78°52.50' 168° 5.7 NM to fld. 187/4W.

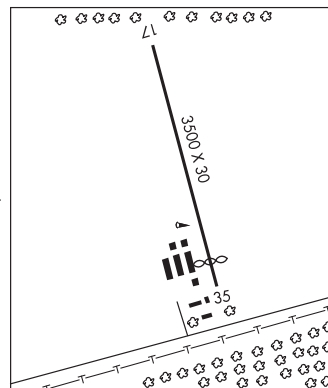
VOR unusable:

058°-068° blo 4,000'

090°-100°

DME unusable:

090°-100°



FIDDLERS N35°42.61' W81°40.28' NOTAM FILE RDU.

ATLANTA
L-25C

NDB (MHW) 391 FIQ 031° 7.2 NM to Foothills Rgnl. 1165/7W.

NDB unusable:

Byd 20 NM