

RALEIGH/DURHAM

RALEIGH-DURHAM INTL (RDU)(KRDU) P (ARNG) 9 NW UTC-5(-4DT) N35°52.66' W78°47.25'

CHARLOTTE
H-9C, 12H, L-36F
IAP, AD

435 B LRA Class I, ARFF Index D NOTAM FILE RDU

RWY 05L-23R: H1000X150 (CONC-WC) S-75, D-190, 2S-175,

2D-355, 2D/2D2-750 PCN 33 R/B/X/T HIRL CL

RWY 05L: MALSR. TDZL. PAPI(P4L)—GA 3.0° TCH 72'. RVR-TMR 0.6% up.

RWY 23R: ALSF2. TDZL. PAPI(P4L)—GA 3.0° TCH 69'. RVR-TMR Rgt ttc.

RWY 05R-23L: H7500X150 (ASPH-GRVD) S-75, D-176, 2S-175, 2D-335, 2D/2D2-750 PCN 89 F/A/X/T HIRL CL 0.4% up NE

RWY 05R: MALSR. PAPI(P4L)—GA 3.0° TCH 62'. RVR-TR Rgt ttc.

RWY 23L: MALSR. TDZL. PAPI(P4L)—GA 3.0° TCH 56'. RVR-TR

RWY 14-32: H3570X100 (ASPH) S-12 PCN 16 F/A/X/T MIRL

RWY 32: REIL. PAPI(P4L)—GA 3.5° TCH 47'. Trees.

RUNWAY DECLARED DISTANCE INFORMATION

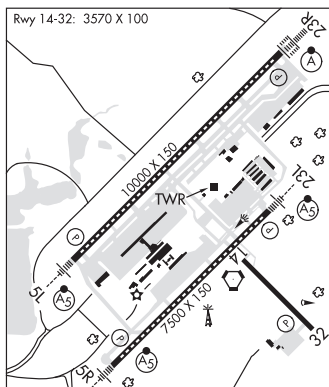
RWY 05L:TORA-10000 TODA-10000 ASDA-10000 LDA-10000

RWY 05R:TORA-7500 TODA-7500 ASDA-7500 LDA-7500

RWY 23L:TORA-7500 TODA-7500 ASDA-7500 LDA-7500

RWY 23R:TORA-10000 TODA-10000 ASDA-10000 LDA-10000

SERVICE: S4 **FUEL** 100LL, JET A **OX** 1, 2 **LGT** Visibility of bcn shielded to the North. **MILITARY—FUEL** A, A+ (C919-840-2200.) (NC-100LL)



AIRPORT REMARKS: Attended continuously. Arpt CLOSED to airships. Rwy 05L-23R ungrooved. Twy F1 is clsd UFN. PPR for all mil acft F/W—R/W and unscheduled charter flights with 30 or more passengers. 24 hrs PN rqr for mil practice apch. Ctc arpt ops 919-840-7510 or RDU App C919-380-3125. 24 hr PPR for all F/W and R/W mil acft going to ARNG ramp, POC DSN C984-661-6200. OSACOM flt det C984-661-6202. No jet engine maint runs btn 0500-1100Z†. National Guard 24 hr PPR for jet acft and trans mil acft 919-840-7510. Terminal 2 acft must ctc ramp tower prior to push. Twy E behind South Cargo 4 and Twy J behind corporate hangars not visible from twr. All Transportation of Dangerous Goods V acft taxiing on Twy A are rstd to taxi speed of 15 mph. Aprn Txl F btn Twy T1 and Twy T7 clsd to acft with wingspan more than 171'. Twy C btn Twy F and G is rstd to acft less than a max gross tkof weight of 490,000 lbs. Twy D clsd to acft with wingspan more than 171' when Twy G and H are occupied. Flight Notification Service (ADCUS) avbl.

AIRPORT MANAGER: (919) 840-7701

WEATHER DATA SOURCES: ASOS (919) 840-0816 LLWAS. TDWR.

COMMUNICATIONS: D-ATIS 123.8 (919) 840-0486 UNICOM 122.95

RCO 122.2 (RALEIGH RADIO)

Ⓡ APP CON 124.95 (055°-229°) 127.675 (230°-054°)

TOWER 127.45

GND CON 121.9 CLNC DEL 120.1

Ⓡ DEP CON 125.3 (055°-229°) 132.35 (230°-054°)

CPDLC (LOGON KUSA)

PDC

AIRSPACE: CLASS C svc ctc APP CON.

RADIO AIDS TO NAVIGATION: NOTAM FILE RDU.

RALEIGH/DURHAM (H) (H) VORTACW 117.2 RDU Chan 119 N35°52.35' W78°47.00' at fld. 429/9W.

ILS/DME 109.1 I-GKK Chan 28 Rwy 05L. Class IA.

ILS/DME 109.5 I-RDU Chan 32 Rwy 05R. Class IIE.

ILS/DME 108.5 I-LEI Chan 22 Rwy 23L. Class IA. LOC unusable from 1.0 NM to thld; unusable for cpd apch frm 2.0 NM to thld. DME unusable byd 20° left of course.

ILS/DME 111.7 I-DMP Chan 54 Rwy 23R. Class OF IIIIE. LOC unusable byd 20° r of course.

COMM/NAV/WEATHER REMARKS: Trml 1 acft must ctc ATCT on 121.9 prior to push onto Twy A. Trml 2 acft must ctc ramp ATCT on 130.175 prior to push. North cargo apron ADG IV or V acft must ctc ATCT on 121.9 prior to push.

RALEIGH/DURHAM N35°52.35' W78°47.00' NOTAM FILE RDU.

(H) (H) VORTACW 117.2 RDU Chan 119 at Raleigh-Durham Intl. 429/9W.

WASHINGTON
L-35C, 36G