

## MOUNT PLEASANT

**MT PLEASANT RGNL—FAISON FLD** (LRO)(KLRO) 9 NE GMT-5(-4DT) N32°53.87' W79°46.97'

**CHARLOTTE**

12 B TPA—See Remarks NOTAM FILE AND

L-24I

**RWY 17-35:** H3700X75 (ASPH) S-12.5 MIRL

IAP

**RWY 17:** PAPI(P4L)—GA 4.0° TCH 28'.

**RWY 35:** PAPI(P4L)—GA 4.0° TCH 27'. Rgt t/c.

**SERVICE:** S2 FUEL 100LL, JET A LGT Actvt MIRL Rwy 17-35—CTAF.

**AIRPORT REMARKS:** Attended 1100-0100Z†. Deer and birds on and in/ovf arpt. TPA: 988' AGL. Two 2000' twrs aprx 4-6 miles east of arpt. Tgx on the frnt line of the FBO ramp, in frnt of the trml, will be rstrd to acft with wingspan less than 38 ft. No acft, with a wingspan that exceeds 38 ft, is pmtd to park on the frnt line of the FBO ramp or taxi through the frnt taxilane in frnt of the trml as it exceeds safety limits ans wing tip clearances. Acft with wingspans exceeding 38 ft must ctc the arpt FBO in advance at 843-884-8837 for prkg and cdn prior to arr and must tax through the cntr and out taxilanes of the FBO ramp.

**AIRPORT MANAGER:** 843-767-7000

**WEATHER DATA SOURCES:** AWOS-3 118.625 (843) 849-0438.

**COMMUNICATIONS:** CTAF/UNICOM 122.7

Ⓡ **CHARLESTON APP/DEP CON** 121.275

**CLEARANCE DELIVERY PHONE:** For CD ctc Charleston Apch at 843-414-2832.

**RADIO AIDS TO NAVIGATION:** NOTAM FILE CHS.

**CHARLESTON (VH) (H) VORTAC** 113.5 CHS Chan 82 N32°53.66'

W80°02.27' O94° 12.9 NM to fld. 39/5W.

VOR unusable:

070°-106° byd 40 NM

106°-116°

116°-146° byd 40 NM

248°-272° byd 40 NM blo 8,000'

TACAN AZIMUTH unusable:

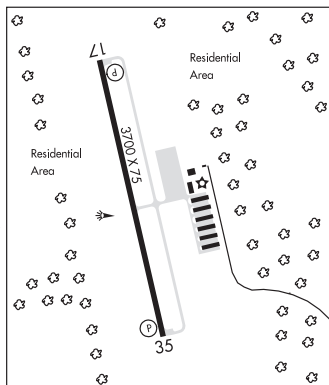
109°-120° byd 25 NM

137°-147°

160°-170°

229°-262° byd 12 NM blo 5,000'

262°-272° byd 15 NM blo 5,000'



**MT PLEASANT RGNL—FAISON FLD** (See MOUNT PLEASANT on page 392)

**MYRTLE BEACH INTL** (MYR)(KMYR) 3 SW UTC-5(-4DT) N33°40.78' W78°55.70'

**CHARLOTTE**

25 B Class I, ARFF Index C NOTAM FILE MYR

H-9C, 12G, L-24I, 35B

**RWY 18-36:** H9503X150 (ASPH—GRVD) S-120, D-233, 2D-424,

IAP, AD

2D/2D2-943 PCN 69 R/B/W/T HIRL

**RWY 18:** MALS. PAPI(P4L)—GA 3.0° TCH 64'. RVR—TR P-line. Rgt t/c.

**RWY 36:** MALS. PAPI(P4L)—GA 3.0° TCH 71'. RVR—TR Trees.

**SERVICE:** S4 FUEL 100LL, JET A LGT When twr clsd ACTIVATE MALS. Rwy 18, MALS. Rwy 36; HIRL Rwy 18-36—CTAF.

**AIRPORT REMARKS:** Attended 1100-0200Z†. Gulls on and in/ovf arpt.

Sightseeing hels oprg in close proximity of arpt and rwy at or blo

1200'. No apvl rqrtd for pushback at trml gates; push is at pilot

discretion; rmn clr of twys. Hel rtes and hldg points remain clear of

rwy cntrlns. Hels depg/arrg pad lctd 700' SSE apch end Rwy 36. Twy

B4 clsd to acft more than 12,500 lbs. MedEvac hel departing Grand

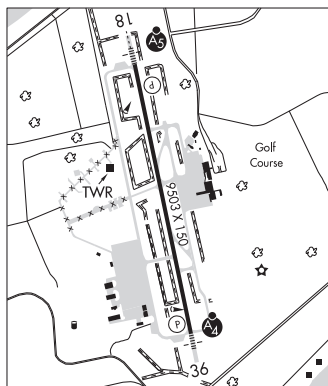
Strand Med Ctr, SW bound, ctc MYR Twr on 134.05 prior to dep or as

soon as ab. User fee arpt. U.S. Customs svc avbl Mon-Fri

1300-2200Z†, otr times PPR and fee charged. Ctc MYR ops on CTAF

128.45 prior to ldg 0400-1100Z†.

**AIRPORT MANAGER:** 843-448-1580



CONTINUED ON NEXT PAGE

**CONTINUED FROM PRECEDING PAGE**

**WEATHER DATA SOURCES:** AWOS-3PT 123.925 (843) 238-0335. LAWRS.

**COMMUNICATIONS:** CTAF 128.45 ATIS 123.925 UNICOM 122.95

Ⓡ **APP/DEP CON** 119.2 (322°-170°) 127.4 (171°-321°) (1100-0400Z‡)

**JACKSONVILLE CENTER APP/DEP CON** 134.375 (0400-1100Z‡)

**TOWER** 128.45 (1100-0400Z‡) **GND CON/CLNC DEL** 120.3

**AIRSPACE:** CLASS C svc ctc **APP CON** svc 1100-0400Z‡ other times CLASS G.

**RADIO AIDS TO NAVIGATION:** NOTAM FILE CRE.

**GRAND STRAND (VL) (H) VORTACW** 114.4 CRE Chan 91 N33°48.83' W78°43.47' 235° 13.0 NM to fld. 27/3W.

TACAN AZIMUTH unusable:

296°-335°

DME unusable:

296°-335°

VOR unusable:

000°-005° byd 40 NM

016°-020° byd 40 NM

040°-053° byd 40 NM blo 2,500'

040°-053° byd 47 NM

060°-085° byd 40 NM

130°-140° byd 40 NM

205°-222° byd 40 NM blo 7,000'

205°-222° byd 82 NM

292°-296° byd 40 NM

296°-308° byd 30NM blo 5,000'

330°-334° byd 40 NM

**ILS/DME** 109.5 I-MYR Chan 32 Rwy 18. Class IIE.

**ILS** 111.9 I-BSQ Rwy 36. Class IE.

**NEWBERRY CO** (EOE)(KEOE) 3 N UTC-5(-4DT) N34°18.56' W81°38.44'

**CHARLOTTE**

570 B NOTAM FILE AND

**L-24J**

**RWY 04-22:** H4001X75 (ASPH-AFSC) S-23, D-30 MIRL

**IAP**

0.9% up NE

**RWY 04:** PAPI(P2L)—GA 3.15° TCH 42'. Trees.

**RWY 22:** PAPI(P2L)—GA 3.15° TCH 43'. Pole. Rgt tfc.

**SERVICE:** S4 **FUEL** 100LL **LGT** ACTIVATE PAPI Rwy 04 and Rwy 22 and

MIRL Rwy 04-22—CTAF.

**AIRPORT REMARKS:** Unattended. Fuel self-serve. Deer on invof arpt.

**AIRPORT MANAGER:** 803-944-0613

**WEATHER DATA SOURCES:** AWOS-3 124.275 (803) 276-2419.

**COMMUNICATIONS:** CTAF/UNICOM 122.8

Ⓡ **COLUMBIA APP/DEP CON** 133.4

**CLEARANCE DELIVERY PHONE:** For CD ctc Columbia Apch at 803-822-4511.

**RADIO AIDS TO NAVIGATION:** NOTAM FILE AND.

**ENOREE NDB (MHW)** 278 EOE N34°18.66' W81°38.18' at fld.

562/7W. NDB unmonitored.

