

CENTERVILLE MUNI (GHM)(KGHM) 3 N UTC-6(-5DT) N35°50.24' W87°26.72'

ATLANTA
L-161
IAP

765 B NOTAM FILE MKL

RWY 02-20: H4002X75 (ASPH) S-21, D-31 MIRL

RWY 02: REIL. PAPI(P4L)—GA 4.0° TCH 43'. Trees.

RWY 20: REIL. PAPI(P4L)—GA 4.0° TCH 53'. Thld dspclcd 239'. Tree.

SERVICE: FUEL 100LL, JET A+ LGT MIRL Rwy 02-20 opr dusk-dawn and preset low intst; to incr intst and actvt—CTAF. 1330—2200Z‡ actvt VGSJ Rwy 02—CTAF. Rwy 20 PAPI unusbl byd 5° left of cntrln.

AIRPORT REMARKS: Attended Mon-Fri 1330-2200Z‡. Aft hr—615-418-2164. Fuel avbl 24 hrs with credit card.

AIRPORT MANAGER: 931-729-3032

COMMUNICATIONS: CTAF/UNICOM 122.8

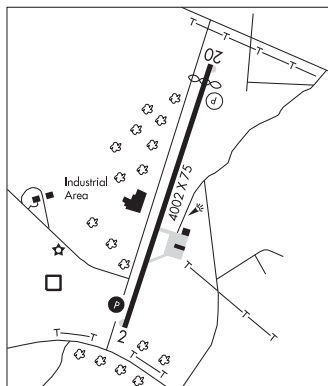
GRAHAM RCO 122.3 (JACKSON RADIO)

Ⓜ **MEMPHIS CENTER APP/DEP CON 125.85**

CLEARANCE DELIVERY PHONE: For CD etc Memphis ARTCC at 901-368-8453/8449.

RADIO AIDS TO NAVIGATION: NOTAM FILE MKL.

GRAHAM (L) DME 111.6 GHM Chan 53 N35°50.04' W87°27.11' at fld. 774.



CHARLES W BAKER (See MILLINGTON on page 435)

CHATTANOOGA

LOVELL FLD (CHA)(KCHA) P (ARNG) 5 E UTC-5(-4DT) N35°02.11' W85°12.21'

ATLANTA
H-9A, 12G, L-25A
IAP, AD

683 B LRA ARFF Index—See Remarks NOTAM FILE CHA

RWY 02-20: H7400X150 (ASPH-GRVD) S-120, D-164, 2S-175,

2D-265 PCN 42 F/A/X/U HIRL CL

RWY 02: MALSR. PAPI(P4R)—GA 3.0° TCH 71'. RVR-TR

RWY 20: ALSF2. TDZL. RVR-TR Railroad.

RWY 15-33: H5575X150 (ASPH-GRVD) S-120, D-164, 2S-175,

2D-265 PCN 14 F/A/Y/U MIRL

RWY 15: PAPI(P4L)—GA 3.0° TCH 45'. Thld dspclcd 106'. Trees.

RWY 33: PAPI(P4L)—GA 3.0° TCH 40'. Thld dspclcd 575'. Trees.

RUNWAY DECLARED DISTANCE INFORMATION

RWY 02: TORA-7400 TODA-7400 ASDA-7100 LDA-7100

RWY 15: TORA-5575 TODA-5575 ASDA-5575 LDA-5470

RWY 20: TORA-7400 TODA-7400 ASDA-7400 LDA-7400

RWY 33: TORA-5470 TODA-5470 ASDA-5470 LDA-5000

SERVICE: S4 FUEL 100LL, JET A OX 3, 4 LGT Actvt MALSR Rwy 02;

TDZL Rwy 20; cntrln lgts Rwy 02-20; HIRL Rwy 02-20—CTAF.

MIRL Rwy 15-33 unusbl when ATCT clsd. **MILITARY—FUEL A+**

(C423-855-2299. 30 min PN rqr.) (NC-100LL, A)

AIRPORT REMARKS: Attended continuously. Birds invof arpt. Tnst actft avoid scy zone wi 300 ft of trml bldg. Hold short instr read back rqr. Class I, ARFF Index B. ARFF Index C avbl O/R. Flight Notification Service (ADCUS) available.

AIRPORT MANAGER: 423-855-2200

WEATHER DATA SOURCES: ASOS 119.85 (423) 499-5973. LLWAS.

COMMUNICATIONS: CTAF 118.3 ATIS 119.85 UNICOM 122.95

CHATTANOOGA RCO 122.2 (NASHVILLE RADIO)

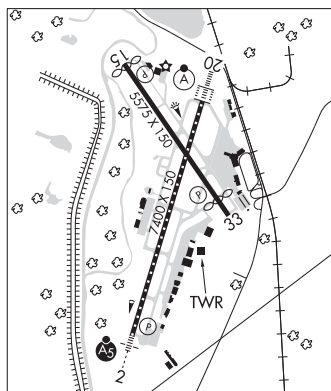
Ⓜ **CHATTANOOGA APP/DEP CON 125.1** (Class C) (1100-0450Z‡)

ATLANTA CENTER APP/DEP CON 132.05 (0450-1100Z‡)

CHATTANOOGA TOWER 118.3 (1100-0450Z‡) **GND CON 121.7** **CLNC DEL 120.95**

CLEARANCE DELIVERY PHONE: For CD if una to ctc on FSS freq, ctc Chattanooga Apch at 423-855-6478, when Apch clsd ctc Atlanta ARTCC at 770-210-7692.

AIRSPACE: CLASS C svc ctc **APP CON** svc 1100-0450Z‡; other times CLASS E.



CONTINUED ON NEXT PAGE

CONTINUED FROM PRECEDING PAGE

RADIO AIDS TO NAVIGATION: NOTAM FILE CHA.

CHOO CHOO (H) DME 115.8 GQO Chan 105 N34°57.68' W85°09.20' 331° 5.1 NM to fld. 1014.

DME unusable:
260°-290°

DAISY NDB (HW) 341 CQN N35°09.99' W85°09.44' 198° 8.2 NM to fld. 936/2W. NDB unmonitored when ATCT closed.

ILS 108.3 I-CGW Rwy 02. Class IB. ILS unmttd when ATCT clsd. Glideslope unusable byd 4° left of course; byd 7° right of course.

ILS 109.5 I-CHA Rwy 20. Class IIE. Unmonitored when ATCT closed.

CHATTANOOGA N35°02.12' W85°12.23'
RCO 122.2 (NASHVILLE RADIO)

ATLANTA
L-25A

CHILHOWEE (See BENTON on page 406)

CLARKSVILLE

OUTLAW FLD (CKV)(KCKV) 6 NW UTC-6(-5DT) N36°37.31' W87°24.90'

550 B TPA-1600(1050) NOTAM FILE CKV

RWY 17-35: H5999X100 (ASPH) S-60, D-90 PCN 27 R/C/X/T MIRL

RWY 17: REIL. PAPI(P2L)-GA 3.0° TCH 54'. Trees.

RWY 35: MALS. PAPI(P2L)-GA 3.0° TCH 54'. Trees. Rgt tfc.

RWY 05-23: H4004X100 (ASPH) S-40, D-60

RWY 05: Thld dsplcd 402'. Tree. Rgt tfc.

RWY 23: Thld dsplcd 503'. Tree.

RUNWAY DECLARED DISTANCE INFORMATION

RWY 05: TORA-4004 TODA-4004 ASDA-3501 LDA-3099

RWY 23: TORA-4004 TODA-4004 ASDA-3602 LDA-3099

SERVICE: S4 FUEL 100LL, JET A+ LGT Actvt MALS Rwy 35; REIL Rwy 17-CTAF. PAPI Rwy 17 unusbl byd 9° right of cntln.

AIRPORT REMARKS: Attended Mon-Fri 1300-0000Z, Sat-Sun 1400-2200Z. Arpt unatndd Christmas, Thanksgiving and New Year. Parachute Jumping. Deer on and invof arpt. Extv mil and civ flt trng within arpt area. Fuel: aft hr svc-931-217-8765. Rwy 05-23 markings peeling and faded.

AIRPORT MANAGER: 931-431-2080

WEATHER DATA SOURCES: ASOS 134.575 (931) 431-3045.

COMMUNICATIONS: CTAF/UNICOM 122.8

® **CAMPBELL APP/DEP CON** 134.35

CLEARANCE DELIVERY PHONE: For CD when una via freq etc Campbell Apch at 270-798-6441.

RADIO AIDS TO NAVIGATION: NOTAM FILE CKV.

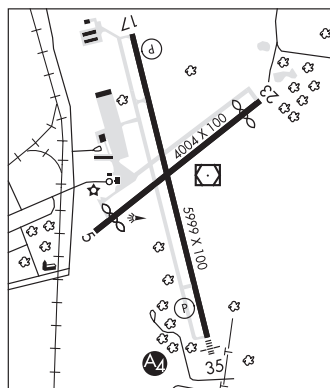
CLARKSVILLE (T) (T) VOR/DME 110.6 CKV Chan 43 N36°37.32' W87°24.76' at fld. 537/1W.

VOR portion unusable:

090°-110° byd 20 NM

SNUFF NDB (LOMW) 335 CK N36°31.62' W87°23.21' 348° 5.8 NM to fld. 501/1W.

LOC 111.7 I-CKV Rwy 35. LOM SNUFF NDB. Unmonitored.



ST LOUIS
H-6K, 9A, L-161
IAP