

**LUIS MUNOZ MARIN INTL** (SJU)(TJSJ) P 3 SE UTC-4 N18°26.36' W66°00.13'

**PUERTO RICO-VIRGIN ISLANDS**

10 B LRA Class I, ARFF Index D NOTAM FILE TJSJ

H-2G, L-5C, 6G, A-3G

**RWY 08-26:** H10400X193 (ASPH-GRVD) S-120, D-250, 2D-499,

IAP, AD

2D/2D2-1024 PCR 888 R/B/W/T HIRL

**RWY 08:** MALSR. PAPI(P4L)—GA 2.75° TCH 64'. Thld dsplcd 400'.

Tree. Rgt tfc.

**RWY 26:** REIL. Thld dsplcd 400'. Tree.

**RWY 10-28:** H8016X150 (CONC-GRVD) S-120, D-250, 2D-550,

2D/2D2-1075 PCR 1050 R/B/W/T HIRL

**RWY 10:** MALSR. PAPI(P4L)—GA 3.0° TCH 53'. Tree. Rgt tfc.

**RWY 28:** PAPI(P4L)—GA 3.0° TCH 53'. Trees.

**RUNWAY DECLARED DISTANCE INFORMATION**

**RWY 08:** TORA-10400 TODA-10400 ASDA-9784 LDA-9384

**RWY 10:** TORA-8016 TODA-8016 ASDA-8016 LDA-8016

**RWY 26:** TORA-10400 TODA-10400 ASDA-10308 LDA-9908

**RWY 28:** TORA-8016 TODA-8016 ASDA-8016 LDA-8016

**SERVICE:** S4 FUEL 100, JET A+, A++

**AIRPORT REMARKS:** Attended continuously. FBO/Gnd handler must submit

72 hrs PPR for all mil acft by phone to 787-253-0979. Rwy 08 fst

680' conc. Engine run-ups prohibited on gates area. Acft 180° turns

on twys reqs OPS coord. Apron 12 avbl for general aviation acft only.

Twy J btn J1 and J5 (not incl J5) clsd to acft with greater than 118'

wingspan. All pvt and corporate acft must ctc apt OPS, before arrival,

for FBO's and ground handling info at 787-253-0979. Ldg fee. Flight Notification Service (ADCUS) avbl.

**MILITARY REMARKS: RSTD** Inbound acft originating from OCONUS with a PPR for Muniz ANGB apn must clear Customs and Border Protection at civ side. Prior coord must be made with ANG AMOPS, phone 740-9629 at least one business day prior to arrival. **ANG** Military Apron—Offl bus. No ovngt prkg allowed. Opr 1130-2000Z Mon-Fri, clsd wkend and hol. PPR DSN 740-9629, C787-253-7629. All tran acft ctc comd post UHF 235.0, 20 min prior to ldg and prior to eng start.

**AIRPORT MANAGER:** (787) 289-7240

**WEATHER DATA SOURCES:** ASOS (787) 791-6200 LLWAS. TDWR.

**COMMUNICATIONS:** D-ATIS 125.8 UNICOM 123.0

Ⓡ **SAN JUAN APP/DEP CON** 119.4 (WEST & SW) 120.9 (NORTH & EAST)

**SAN JUAN TOWER** 132.05 **GND CON** 121.9 **PRE TAXI CLNC/CLNC DEL** 126.4

**CPDLC** (LOGON KUSA)

**PDC**

**AIRSPACE:** CLASS C svc ctc **APP CON.**

**RADIO AIDS TO NAVIGATION:** NOTAM FILE TJSJ.

**SAN JUAN (H) (H) VORTACW** 114.0 SJU Chan 87 N18°26.78' W65°59.37' at fld. 6/11W.

VOR unusable:

120°-164° byd 10 NM blo 9,000'

165°-260° byd 28 NM blo 5,000'

TACAN AZIMUTH unusable:

120°-164° byd 10 NM blo 9,000'

165°-260° byd 28 NM blo 5,000'

DME unusable:

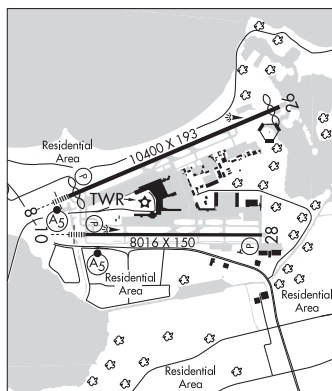
120°-164° byd 10 NM blo 9,000'

165°-260° byd 28 NM blo 5,000'

**PATTY NDB (MHW/LOM)** 330 SJ N18°24.53' W66°05.37' 081° 5.3 NM to fld. 67/11W. NOTAM FILE SJU.

**ILS** 110.3 I-SJU Rwy 08. Class IA. LOM PATTY NDB. Glideslope unusable blo 180'.

**ILS/DME** 109.7 I-CLA Chan 34 Rwy 10. Class IB.



**SAN JUAN** N18°26.78' W65°59.37' NOTAM FILE TJSJ.

**PUERTO RICO-VIRGIN ISLANDS**

(H) (H) **VORTACW** 114.0 SJU Chan 87 at Luis Munoz Marin Intl. 6/11W.

H-2F, L-5C, 6G

VOR unusable:

120°-164° byd 10 NM blo 9,000'

165°-260° byd 28 NM blo 5,000'

TACAN AZIMUTH unusable:

120°-164° byd 10 NM blo 9,000'

165°-260° byd 28 NM blo 5,000'

DME unusable:

120°-164° byd 10 NM blo 9,000'

165°-260° byd 28 NM blo 5,000'