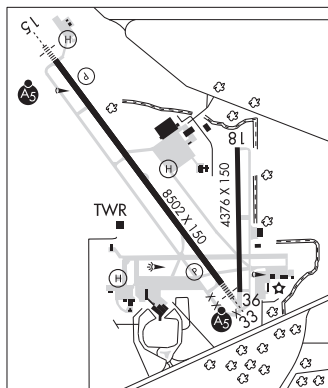


## MOBILE

**MOBILE INTL** (BFM)(KBFM) 3 S UTC-6(-5DT) N30°37.61' W88°04.09' NEW ORLEANS  
 26 B LRA ARFF Index—See Remarks NOTAM FILE BFM H-6K, 8G, L-21C, 22G  
**RWY 14-32:** H9618X150 (ASPH-CONC-GRVD) S-75, D-185, 2D-325 PCN 72 F/B/X/T HIRL CL IAF, AD  
**RWY 14:** REIL. PAPI(P4L)—GA 3.0° TCH 68'. RVR-R Tree. Rgt tfc.  
**RWY 32:** MALSR. TDZL. PAPI(P4L)—GA 3.0° TCH 71'. RVR-T  
**RWY 18-36:** H7800X150 (ASPH-CONC) S-76, D-150, 2D-320 PCN 34 R/B/X/T MIRL  
**RWY 18:** PAPI(P4L)—GA 3.0° TCH 64'. Pole.  
**RWY 36:** PAPI(P4L)—GA 3.0° TCH 62'. Trees. Rgt tfc.  
**SERVICE:** S4 FUEL 100LL, JET A OX 1, 2 LGT When twr clsd ACTIVATE MALSR Rwy 32—CTAF. HIRL Rwy 14-32 preset on step 3 or higher based on wx. Rwy 14-32 ctrlrn lgts avbl dur twr opr hrs only. Rwy 32 TDZL avbl dur twr opr hrs only.  
**AIRPORT REMARKS:** Attended 1300-0500Z†. Conditions not monitored when ATCT clsd. Birds periodically on or invof arpt and incr in act dur inclement wx. Hot cargo space assigned to Twy A between Rwy 18-38 and A6. Class I, ARFF Index B. Arpt mntns ARFF Index B. Index C avbl upon req.  
**AIRPORT MANAGER:** 251-639-4680  
**WEATHER DATA SOURCES:** ASOS (251) 431-6762 LAWRS SAWRS.  
**COMMUNICATIONS:** CTAF 118.8 ATIS 135.575 UNICOM 122.95  
 (R) APP/DEP CON 118.5 (1200-0500Z‡)  
**HOUSTON CENTER APP/DEP CON** 127.65 (0500-1200Z‡)  
**INTERNATIONAL TOWER** 118.8 (1300-0100Z‡ Sun; 1300-0400Z‡ Mon, 0930-0400Z‡ Tue-Fri, 1000-0100Z‡ Sat)  
**GND CON** 121.7  
**CLEARANCE DELIVERY PHONE:** For CD when ATCT clsd ctc Mobile Apch at 251-662-6236. When Apch clsd ctc Houston ARTCC at 281-230-5622.  
**AIRSPACE:** CLASS D svc 1300-0100Z‡ Sun, 1300-0400Z‡ Mon, 0930-0400Z‡ Tue-Fri, 1000-0100Z‡ Sat; other times CLASS G.  
**RADIO AIDS TO NAVIGATION:** NOTAM FILE BFM.  
**BROOKLEY (L) VORTACW** 116.35 BFM Chan 110(Y) N30°36.76' W88°03.33' 318° 1.1 NM to fld. 12/4E. VOR unusable.  
 265°-300° byd 23 NM blo 3,000'  
 TACAN unusable:  
 265°-300° byd 23 NM blo 3,000'  
**ILS/DME** 108.5 I-RUJ Chan 22 Rwy 32. Class IA. Unmonitored when ATCT clsd.

**MOBILE RGNL** (MOB)(KMOB) P (CG ARNG) 11 W UTC-6(-5DT) N30°41.49' W88°14.57' NEW ORLEANS  
 219 B TPA—See Remarks LRA Class I, ARFF Index B NOTAM FILE MOB H-6K, 8G, L-21C, 22G  
**RWY 15-33:** H8502X150 (ASPH-GRVD) S-75, D-162, 2D-270, IAF, AD  
 2D/2D2-550 PCN 55 F/D/W/U HIRL  
**RWY 15:** MALSR. PAPI(P4L)—GA 3.0° TCH 50'. RVR-T  
**RWY 33:** MALSR. PAPI(P4L)—GA 3.0° TCH 50'. RVR-T  
**RWY 18-36:** H4376X150 (ASPH-GRVD) S-47, D-60, 2D-96  
 PCN 14 F/D/W/U MIRL  
**RWY 18:** Tree.  
**RWY 36:** Trees.  
**SERVICE:** S4 FUEL 100LL, JET A, A+ OX 2, 4 LGT When ATCT clsd actvt MALSR Rwys 15 & 33—CTAF. PAPI Rwys 15 & 33 opr consly. HIRL Rwy 15-33 preset step 3 or hydr, based on wx conds.  
**MILITARY—JASU** 4(NC-4 Equivalent) FUEL J4(Mil) A, A+ (C251-633-5000.) (NC-100LL) FLUID ADI LHOXRB OIL O-128-133-148-156(Mil)  
**AIRPORT REMARKS:** Attended continuously. Conds not mntd when ATCT clsd. Rwy 18-36 CLOSED 0400-1300Z‡ excp for emerg opns. TPA—hel/sngl srs Cat I 800 ft AGL, 1300 ft AGL fixed wing acft, ovhd 1800 ft AGL. Coast Guard; W apron, E apron. Rwy 18-36 not avbl for sked acr opns with more than 9 psgr seats or unsked acr at least 31 psgr seats. Ldg fee for non-scheduled coml acft over 65,000 lbs.  
**AIRPORT MANAGER:** 251-633-4510  
**WEATHER DATA SOURCES:** ASOS 124.75 (251) 607-0469. LLWAS.  
**COMMUNICATIONS:** CTAF 118.3 ATIS 124.75 UNICOM 122.95  
 RCO 122.2 (ANNISTON RADIO)  
 (R) MOBILE APP/DEP CON 118.5 (320°-139°) 121.0 (140°-319°) (1200-0500Z‡)  
**HOUSTON CENTER APP/DEP CON** 127.65 (0500-1200Z‡)  
**MOBILE TOWER** 118.3 (1200-0500Z‡) **GND CON** 121.9 **CLNC DEL** 119.85  
**CLEARANCE DELIVERY PHONE:** For CD if una to ctc on FSS freq, ctc Houston ARTCC at 281-230-5622.



CONTINUED ON NEXT PAGE

CONTINUED FROM PRECEDING PAGE

AIRSPACE: CLASS C svc ctc APP CON svc 1200-0500Z†; other times CLASS E.

RADIO AIDS TO NAVIGATION: NOTAM FILE ANB.

SEMMES (VH) (H) VORTACW 115.3 SJI Chan 100 N30°43.56' W88°21.56' 104° 6.4 NM to fld. 190/5E.

VOR unusable:

- 010°-022° byd 40 NM
- 023°-033°
- 045°-075° byd 40 NM
- 076°-088° byd 40 NM blo 3,100'
- 076°-088° byd 49 NM
- 097°-198° byd 40 NM
- 199°-209°
- 210°-228° byd 40 NM
- 211°-221° byd 30 NM blo 6,000'
- 229°-249° byd 40 NM blo 18,000'
- 233°-243° byd 22 NM blo 5,000'
- 250°-254° byd 40 NM
- 255°-270° byd 40 NM blo 18,000'
- 303°-329° byd 40 NM
- 310°-320° byd 22 NM blo 8,000'
- 330°-340°
- 355°-015° byd 20 blo 4,000'
- 358°-004° byd 40 NM

TACAN AZIMUTH unusable:

- 120°-130°
- 268°-274° byd 30 NM blo 5,000'

DME unusable:

- 268°-274° byd 30 NM blo 5,000'

WISLE NDB (HW) 248 MOB N30°45.64' W88°18.19' 144° 5.2 NM to fld. 210/1W. NOTAM FILE MOB. NDB unmonitored.

NDB unusable:

Byd 25 NM

ILS 109.9 I-MOB Rwy 15. Class IIE.

ILS 111.5 I-ATE Rwy 33. Class IA.

ASR (1200-0500Z†)



HELIPAD H1: H100X100 (ASPH)

HELIPAD H2: H60X40 (ASPH)

HELIPAD H3: H60X60 (CONC)

HELIPORT REMARKS: Helipad H3 mil use only helipad lctd at USCG apron.

MONROE CO AEROPLEX (See MONROEVILLE on page 67)

MONROEVILLE

MONROE CO AEROPLEX (MVC)(KMVC) 3 S UTC-6(-5DT) N31°27.48' W87°21.06'

NEW ORLEANS  
H-6K, 9A, L-22H  
IAP

419 B NOTAM FILE ANB

RWY 03-21: H6028X100 (ASPH) S-70 MIRL

RWY 03: REIL. PAPI(P4L)—GA 3.0° TCH 62'. Tree.

RWY 21: REIL. PAPI(P4L)—GA 3.0° TCH 40'. Tree.

SERVICE: FUEL 100LL, JET A+ LGT ACTVT REIL Rwy 03 and 21; PAPI

Rwy 03 and 21—CTAF.

AIRPORT REMARKS: Attended Mon-Fri 1400-0200Z†, Sat-Sun

1400-2300Z†.

AIRPORT MANAGER: 251-575-4235

COMMUNICATIONS: CTAF/UNICOM 123.0

Ⓡ ATLANTA CENTER APP/DEP CON 118.55

RADIO AIDS TO NAVIGATION: NOTAM FILE ANB.

MONROEVILLE (L) (L) VORTACW 116.8 MVC Chan 115 N31°27.56'

W87°21.15' at fld. 420/4E.

