

CROSS CITY (CTY)(KCTY) 1 E UTC-5(-4DT) N29°38.13' W83°06.29'

JACKSONVILLE
H-8G, L-21D, 24G
IAP

42 B NOTAM FILE GNV

RWY 04-22: H5005X75 (ASPH) S-13 PCN 8 F/B/Y/T MIRL

RWY 04: PAPI(P2L)—GA 3.0° TCH 52'. Trees.

RWY 22: PAPI(P2L)—GA 3.0° TCH 56'. Trees.

RWY 13-31: H5001X100 (ASPH-CONC) S-13 PCN 10 R/C/W/T MIRL

RWY 13: REIL. PAPI(P2L)—GA 3.0° TCH 37'. Trees.

RWY 31: REIL. PAPI(P2L)—GA 3.0° TCH 36'. Trees.

SERVICE: S4 **FUEL** 100LL, JET A **LGT** ACTIVATE REIL Rwy 13 and Rwy 31; PAPI Rwy 04, Rwy 13, Rwy 22 and Rwy 31; MIRL Rwy 04-22—CTAF.

AIRPORT REMARKS: Attended 1300-2200Z±. First 300' Rwy 31 conc. Rwy 13 mrkgs faded. Rwy 31 mrkgs faded.

AIRPORT MANAGER: 352-498-6656

WEATHER DATA SOURCES: AWOS-3PT 120.775 (352) 498-0221.

COMMUNICATIONS: CTAF/UNICOM 122.8

RCO 122.5 (GAINESVILLE RADIO)

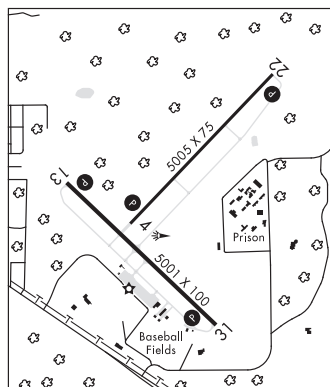
Ⓡ **JACKSONVILLE CENTER APP/DEP CON** 127.8

CLEARANCE DELIVERY PHONE: For CD if una to ctc on FSS freq, ctc Jacksonville ARTCC at 904-845-1592.

RADIO AIDS TO NAVIGATION: NOTAM FILE GNV.

(L) **VORTACW** 112.0 CTY Chan 57 N29°35.94'

W83°02.93' 309° 3.7 NM to fld. 34/2W.



CRYSTAL RIVER—CAPT TOM DAVIS FLD (CGC)(KCGC) 3 SE UTC-5(-4DT) N28°52.06'

JACKSONVILLE
L-21D, 24F
IAP

W82°34.45'

9 B NOTAM FILE CGC

RWY 09-27: H4557X75 (ASPH) S-68, D-97 PCN 23 F/A/X/T MIRL

RWY 09: REIL. PAPI(P4L)—GA 3.0° TCH 44'. Road.

RWY 27: REIL. PAPI(P2R)—GA 3.0° TCH 43'. Brush.

RWY 18-36: 2666X100 (TURF)

RWY 18: Thld dspld 192'. Bldg.

RWY 36: Thld dspld 819'. Fence.

SERVICE: S2 **FUEL** 100LL, JET A **LGT** Actvt REIL Rwy 09 and 27; MIRL Rwy 09-27—CTAF.

AIRPORT REMARKS: Attended 1300-2300Z±. Aerobatic actvt along N side of Rwy 09-27 and 4 NM SW of arpt. Ctc UNICOM for tfc info, and NOTAMS or FSS for specific times. Glider ops within 25 NM. Rwy 18-36 dthr mkd with green pipes. Rwy 18-36 soft and wet aft rain. Bldgs 30-85 ft W of AER Rwy 18 100 ft of cntrln both sides of dspld thld. Rwy 18-36 marked with white pipes every 200'. Bldg 30-80' West of AER Rwy 18. Rwy 27 trees on both sides of rwy in transition sfc. Standing water inside rwy safety areas for all rwy after hvy rainfall.

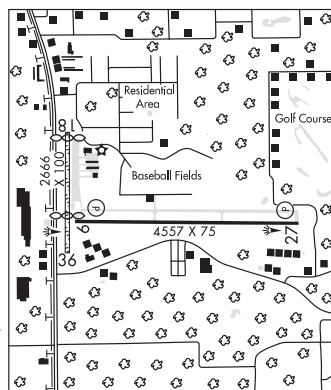
AIRPORT MANAGER: 352-795-6868

WEATHER DATA SOURCES: AWOS-3 118.325 (352) 563-6600.

COMMUNICATIONS: CTAF/UNICOM 122.725

Ⓡ **JACKSONVILLE APP/DEP CON** 118.6

CLEARANCE DELIVERY PHONE: For CD ctc Jacksonville Apmh at 904-741-0284.



CONTINUED ON NEXT PAGE

CONTINUED FROM PRECEDING PAGE

RADIO AIDS TO NAVIGATION: NOTAM FILE OCF.

OCALA (VL) (L) VORTAC 113.7 OCF Chan 84 N29°10.65' W82°13.58' 225° 26.0 NM to fld. 78/0E.

TACAN AZIMUTH unusable:

- 025°-078°
- 329°-350°
- 351°-024° byd 28NM

VOR unusable:

- 010°-024° byd 40 NM
- 030°-037° byd 40 NM
- 053°-060° byd 40 NM
- 065°-077° byd 40 NM
- 094°-108° byd 40 NM blo 3,000'
- 094°-108° byd 66 NM
- 127°-137° byd 40 NM
- 157°-171° byd 40 NM blo 13,000'
- 157°-171° byd 75 NM
- 177°-187° byd 40 NM blo 2,000'
- 177°-187° byd 54 NM
- 193°-210° byd 40 NM
- 219°-244° byd 40 NM
- 277°-298° byd 40 NM
- 325°-335° byd 40 NM blo 10,000'
- 325°-335° byd 76 NM
- 352°-005° byd 111 NM
- 352°-005° byd 40 NM blo 12,000'

CYPRESS N26°09.21' W81°46.69' NOTAM FILE APF.

(T) (T) VOR/DME 108.6 CYY Chan 23 at Naples Muni. 9/3W.

DME unusable:

- 215°-315°
- VOR unusable:
- 078°-139° blo 10,000'

MIAMI
H-8H, L-21D, 23B

DADE-COLLIER TRAINING AND TRANSITION (See MIAMI on page 135)

DAYTONA BEACH INTL (DAB)(KDAB) 3 SW UTC-5(-4DT) N29°10.79' W81°03.48'

34 B TPA—See Remarks Class I, ARFF Index C NOTAM FILE DAB

RWY 07L-25R: H10500X150 (ASPH-CONC-GRVD) S-120, D-214,

2S-175, 2D-406, 2D/2D2-919 PCR 650 R/A/W/T HIRL CL

RWY 07L: MALS. TDZL. RVR-T Thld dspcl 690'. Road.

RWY 25R: MALS. PAPI(P4L)—GA 3.0° TCH 72'. RVR-R Trees. Rgt tfc.

RWY 16-34: H6001X150 (ASPH-GRVD) S-109, D-191, 2S-175,

2D-355, 2D/2D2-750 PCR 420 F/A/X/T MIRL

RWY 16: REIL. PAPI(P4L)—GA 3.0° TCH 50'. Trees.

RWY 34: REIL. PAPI(P4L)—GA 3.0° TCH 50'. Trees.

RWY 07R-25L: H3195X100 (ASPH) S-26, D-44 PCR 90 F/C/X/T

MIRL

RWY 07R: REIL. PAPI(P2L)—GA 3.0° TCH 48'. Trees. Rgt tfc.

RWY 25L: REIL. PAPI(P2L)—GA 3.0° TCH 44'. Trees.

LAND AND HOLD-SHORT OPERATIONS

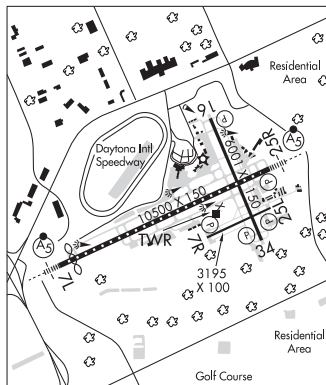
LDG RWY	HOLD-SHORT POINT	AVBL LDG DIST
RWY 07L	TWY W	7500
RWY 16	07L-25R	2900
RWY 34	07L-25R	2564

RUNWAY DECLARED DISTANCE INFORMATION

RWY 07L:TORA-10500	TODA-10500	ASDA-10500	LDA-9810
RWY 07R:TORA-3195	TODA-3195	ASDA-3195	LDA-3195
RWY 16: TORA-6001	TODA-6001	ASDA-5969	LDA-5969
RWY 25L:TORA-3195	TODA-3195	ASDA-3195	LDA-3195
RWY 25R:TORA-10500	TODA-10500	ASDA-10293	LDA-10293
RWY 34: TORA-6001	TODA-6001	ASDA-6001	LDA-6001

JACKSONVILLE

H-8H, L-21D, 24G
IAP, AD



CONTINUED ON NEXT PAGE