

**SIERRA VISTA MUNI—LIBBY AAF** (FHU)(KFHU) MIL/CIV A 3 N UTC-7 N31°35.31' W110°20.66' PHOENIX  
4719 B TPA—See Remarks NOTAM FILE FHU H-4K, L-5C  
**RWY 08-26:** H12001X150 (CONC) S-75, D-200, 2D-450, IAP, DIAP, AD  
2D/2D2-700 PCN 58 R/B/W/T HIRL 1.0% up W  
**RWY 08:** PAPI(P4L)—GA 3.0° TCH 50'.  
**RWY 26:** PAPI(P4L)—GA 3.0° TCH 80'. Rgt tfc.  
**RWY 12-30:** H5366X100 (ASPH—CONC) S-46, D-106, 2D-137,  
2D/2D2-172 PCN 92 F/A/W/T MIRL  
**RWY 12:** PAPI(P4L)—GA 3.0° TCH 51'.  
**RWY 30:** PAPI(P4R)—GA 3.0° TCH 51'. Rgt tfc.  
**RWY 03-21:** H4285X75 (ASPH—CONC) PCN 8 F/A/W/T MIRL  
2.0% up SW  
**RWY 03:** Thld dsplcd 1253'.  
**RWY 21:** Rgt tfc.

**RUNWAY DECLARED DISTANCE INFORMATION**

**RWY 03:** TORA-4285 TODA-4285 ASDA-4285 LDA-3032  
**RWY 08:** TORA-12001 TODA-12001 ASDA-12001 LDA-12001  
**RWY 12:** TORA-5366 TODA-5366 ASDA-5366 LDA-5366  
**RWY 21:** TORA-4285 TODA-4285 ASDA-4285 LDA-4285  
**RWY 26:** TORA-12001 TODA-12001 ASDA-12001 LDA-12001  
**RWY 30:** TORA-5366 TODA-5366 ASDA-5366 LDA-5366

**SERVICE:** FUEL 100, JET A LGT ACTVT PAPI Rwy 08, 26, 12 and 30,  
HIRL Rwy 08-26, MIRL Rwy 03-21 and 12-30 and perimeter lgt H1—CTAF. FUEL Mil pol 1530-2230Z Mon-Fri; exc  
hol; otr times 24 hr prior notice—D879-2860/2862. Pol svc rqr crew atnd to specify fuel/oil rqmnts; fuel lmtd to 6000  
gal; Jet A avbl 1400-2230Z dly; otr times C520-234-3552; svc fee. F24 (Jet AA) with icing inhibitor. Jet A avbl  
1400-2230Z dly; OT C520-234-3552, svc fee. Fuel A w/o icing inhibitor. **TRAN ALERT** Tsnt ctc Libby ATC or BAOPS to  
coord prkg.

**AIRPORT REMARKS:** Attended Mon-Fri 1400-2230Z. Mil jet ops wkdays; bird haz invof rwys on tkof and apch; deer on and  
invof arpt spcly at night. Twy P and S edge lgt N/A. When Class D asp in efct unmanned aerial vehicles opr sfc—7000 ft  
MSL. Bird haz exists all rwys. Asp Class D sfc area lmtd to dep and FSL durg ngt unmanned acft ops; exp delays. Manned  
and unmanned acft not auth in same tfc pat. Manned arr may flw unmanned acft on FNA. Civil tfc pat unavbl durg dalt  
unmanned acft tfc pat ops; dep and FSL auth. Non scheduled arriving acft rqrq assistance, ctc GOC 533-2291/2292.  
TPA—fixed wing north; rotary wing south; alt fixed wing reciprocating 5700 ft; rotor wing 5500 ft; fixed wing turboprop/jet  
6200 ft. Twy G and J lmtd to single wheel acft max 33,000 lb; Twy K lmtd to single wheel acft max 50,000 lb; Twy D  
and acft apron on NW side lmtd to dual wheel acft max 100,000 lb. Crcg S of Rwy 08 and 30 NA. NOTE: See Special  
Notices—Tethered Areostat Radar System (TARS).

**MILITARY REMARKS:** Opr 0600-0600Z Sun-Sat; exc hol. Otr time 72 hr PPR—D879-2860/2862/C520-538-2860/2862.  
See flip AP/1 supplementary arpt rmk. **RSTD** 24 hr PPR for tnst mil; civ acft PPR to enter mil ramp. Twy G lmtd to single  
wheel acft max 33,000 lbs, Twy K lmtd to single wheel acft max 50,000 lbs. Circling not authorized South of Rwy 08 and  
Rwy 30. **CAUTION** Exp ws all rwys; arpt SW wind may not rep wind on FNA. Extv mil jet ops wkdays. Rwy 08-26 and  
12-30 ovrrs unavbl; blw 25 pavement cond index. Twy P and S edge lgt N/A. MALSR not installed in conjunction with  
Rwy 26 ILS. **CSTMS/AG/IMG** Avbl with 72 hr PN for US mil or DoD contr acft only. **TFC PAT** 981 ft AGL fixed wing unmanned  
acft. Do not exceed 5,700 ft until der. **MISC** Tsnt and RON acft using mil side sign in at BAOPS prior to depg flt line. Assault  
strip 5 NM NE 72 hr ppr. Nonsked arr rqrq asst—EOC 533-2291. Prkg mil tsnt sign in at BASE OPS prior to lvr flt line.  
Wx obsn/fcst 0600-0600Z Sun-Fri; exc hol. Otr times ASOS. Libby wx avbl—122.95  
D879-3798/2865/C520-538-3798/2865. Remote briefing svc avbl 25 OWS Davis-Monthan AFB  
D228-6598/6599/6588/C520-228-6598/6599/6588 or <https://25ows.us.af.mil>. A Libby BAOPS 0600-0600Z  
Sun-Sat; exc hol; other times 72 hr PPR. D879-2860/2862, C520-538-2860/2862.

**AIRPORT MANAGER:** 520-458-5775

**WEATHER DATA SOURCES:** ASOS

**COMMUNICATIONS:** CTAF 124.95 ATIS 134.75 263.025 UNICOM 122.95

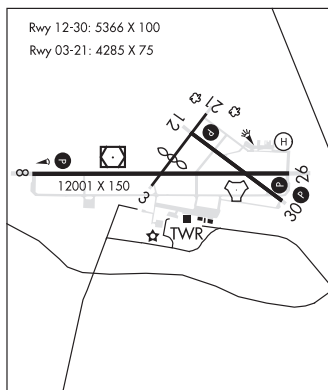
Ⓡ **LIBBY AAF GCA APP/DEP CON** 127.05 254.25 (BAOPS Mon 0600Z-Sat 0600Z; exc hol. Otr time 72 hr  
PPR—D879-2862/2860/C520-538-2862/2860.)

Ⓡ **ALBUQUERQUE CENTER APP/DEP CON** 134.45 327.15

**LIBBY TOWER** 124.95 284.75 (0600Z Mon-0600Z Sat; exc hol, otr time 72 hr  
PPR—D879-2862/2860/C520-538-2862/2860.)

**GND CON** 121.7 268.7

**LIBBY OPS** 122.95



**CONTINUED ON NEXT PAGE**

CONTINUED FROM PRECEDING PAGE

AIRSPACE: CLASS D svc Mon 0600–Sat 0600Z exc hcl, other times by NOTAM; other times CLASS G..

RADIO AIDS TO NAVIGATION: NOTAM FILE DUG.

**DOUGLAS (VL) (H) VORTACW** 108.8 DUG Chan 25 N31°28.36' W109°36.12' 268° 38.7 NM to fld. 4131/13E.

TACAN AZIMUTH unusable:

- 045°–065° byd 26 NM blo 10,000'
- 065°–095° byd 28 NM blo 9,500'
- 355°–010° byd 35 NM blo 11,300'

DME unusable:

- 045°–065° byd 26 NM blo 10,000'
- 065°–095° byd 28 NM blo 9,500'
- 355°–010° byd 35 NM blo 11,300'

VOR unusable:

- 046°–063° byd 40 NM blo 11,000'
- 046°–063° byd 49 NM blo 16,000'
- 046°–063° byd 63 NM
- 253°–263° byd 40 NM blo 16,000'
- 253°–263° byd 66 NM
- 264°–277° byd 40 NM
- 278°–288° byd 40 NM blo 16,000'
- 278°–288° byd 52 NM
- 305°–316° byd 40 NM
- 345°–045° byd 40 NM

**LIBBY (T) (T) VOR/DME** 113.6 FHU Chan 83 N31°35.38' W110°21.30' at fld. 4665/13E. NOTAM FILE FHU.

VOR unmonitored when GCA clsd.

Mil: No NOTAM MP 1200–1500Z 4th Thu of month

VOR unusable:

- 110°–235° byd 10 NM

DME unusable:

- 110°–235° byd 10 NM

**FORT HUACHUCA (T) TACAN** Chan 53 ARH (111.6) N31°35.13' W110°20.34' at fld. 4660/12E. NOTAM FILE

FHU. Unmonitored when twr clsd.

TACAN unusable:

- 105°–250° byd 10 NM
- 120°–300° byd 20 NM

Military use: No NOTAM MP 1200–1500Z 1st Thursday of month

**ILS** 109.9 I-FHU Rwy 26. Class IE. Unmonitored when GCA clsd. No NOTAM MP 1200–1500Z 2nd and 3rd Thu of month.

**COMM/NAV/WEATHER REMARKS:** When ATCT clsd 121.5 mntd for emerg. USAF wx fcst avbl 1200–0300Z fm Davis Monthan AFB.

• • • • •

**HELIPAD H1:** H40X40 (ASPH) PERIMETER LGTS

**HELIPORT REMARKS:** ACTVT perimeter lgts Helipad H1—CTAF.

**SPRINGVILLE MUNI (JTC)(KJTC)** 1 WSW UTC-7 N34°07.77' W109°18.65'

7055 B NOTAM FILE PRC

**RWY 03–21:** H8422X75 (ASPH) S-30 MIRL

**RWY 03:** PAPI(P2L)—GA 4.0° TCH 46'. 0.4% down.

**RWY 21:** PAPI(P2L)—GA 3.0° TCH 35'. Rgt tfc. 0.6% up.

**RWY 11–29:** H4603X60 (ASPH) S-19 MIRL

**RWY 11:** PAPI(P2L)—GA 3.0° TCH 35'.

**SERVICE:** FUEL 100LL, JET A+ LGT Rwy 03 PAPI does not provide obstacle clearance 2 NM byd thld. ACTVT PAPI Rwy 03, Rwy 11 and Rwy 21; MIRL Rwy 03–21 and Rwy 11–29—CTAF: 5 clicks on; 7 clicks off.

**AIRPORT REMARKS:** Attended 1500–2300Z. Fuel: 100LL: Aft hr – 928–245–0151. Mil tfc invof arpt. Wildlife on and invof arpt. Density indcr at fuel pumps.

**AIRPORT MANAGER:** 928-333-5746

**WEATHER DATA SOURCES:** AWOS-3PT 119.65 (928) 333-5716.

**COMMUNICATIONS:** CTAF/UNICOM 122.8

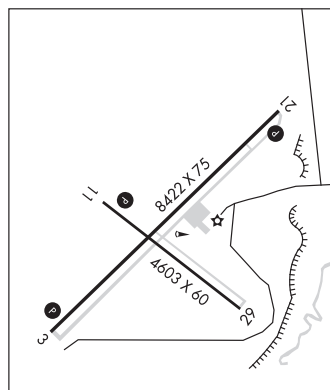
® ALBUQUERQUE CENTER APP/DEP CON 132.9

**CLEARANCE DELIVERY PHONE:** For CD ctc Albuquerque ARTCC at 505-856-4861.

PHOENIX

H-4K, L-5D

IAF



CONTINUED ON NEXT PAGE