

TUBA CITY (T03) 5 W UTC-7 N36°05.56' W111°22.99'

4513 B NOTAM FILE PRC

RWY 15-33: H6230X75 (ASPH) S-12.5 MIRL**RWY 15:** PAPI(P2L)—GA 3.0° TCH 40'.**RWY 33:** PAPI(P2L)—GA 3.0° TCH 40'.**SERVICE:** LGT ACTVT PAPI Rwy 15 and 33; MIRL Rwy 15-33—CTAF.**AIRPORT REMARKS:** Unattended. Livestock on arpt. Arpt

aces—928-283-2501; gate code: 4513. Rwy 15-33 N 1500 ft sfc undulations up to 8 in.

AIRPORT MANAGER: (505) 728-2804**COMMUNICATIONS:** CTAF 122.9**RCO** 122.05R 113.5T (PRESCOTT RADIO)**RADIO AIDS TO NAVIGATION:** NOTAM FILE PRC.**(VH) (H) VORTAC** 113.5 TBC Chan 82 N36°07.28'

W111°16.18' 238° 5.8 NM to fld. 5045/15E.

VOR unusable:

089°-160° byd 40 NM

183°-202° byd 40 NM

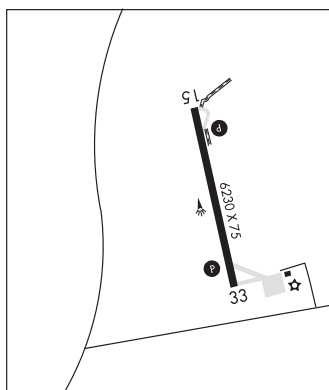
207°-231° byd 40 NM

235°-245° byd 40 NM

275°-053° byd 40 NM

LAS VEGAS

H-4J, L-8G

**TUCSON****RYAN FLD** (RYN)(KRYN) 10 SW UTC-7 N32°08.53' W111°10.47'

2419 B TPA-3219(800) NOTAM FILE PRC

RWY 06R-24L: H5500X75 (ASPH) S-12.5, D-30 MIRL**RWY 06R:** REIL. PAPI(P4L)—GA 3.0° TCH 53'. Rgt tfc.**RWY 24L:** VASI(V4L)—GA 3.0° TCH 26'.**RWY 06L-24R:** H4900X75 (ASPH) S-12.5, D-30 MIRL**RWY 06L:** REIL. PAPI(P4L)—GA 3.0° TCH 42'.**RWY 24R:** PAPI(P4L)—GA 3.0° TCH 42'. Rgt tfc.**RWY 15-33:** H4010X75 (ASPH) MIRL 0.8% up S**RWY 15:** Rgt tfc.**SERVICE:** S4 **FUEL** 100LL, JET A **LGT** When ATCT clsd ACTVT PAPI Rwy 06R, 06L, and 24R; VASI Rwy 24L; MIRL Rwy 06R-24L and 15-33—CTAF. Rwy 24R PAPI unusbl byd 4.9 NM.**AIRPORT REMARKS:** Attended Mon-Fri 1500-0000Z, Sat 1500-0000Z.

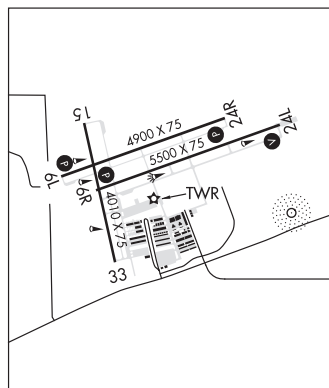
Fuel A 1500-0000Z; aft hr svc fee-520-744-7474; 100LL self serve H24 with credit card. Rwy 06L-24R CLSD when ATCT clsd. Rwy 06L and 06R calm wind rwy; aftn wind may favor Rwy 24L and Rwy 24R. Use Indg lgts in pat. Rwy 06R fgt ILS practice apchs. Note: See Special Notices—Glider Operations Northwest of Tucson, Arizona.

AIRPORT MANAGER: 520-573-8100**WEATHER DATA SOURCES:** AWOS-3 133.35 (520) 578-0269.**COMMUNICATIONS:** CTAF 125.8 ATIS 133.35 (520-578-0269)® **TUCSON APP/DEP CON** 128.5**TOWER** 125.8 120.35 (1300-0300Z) **GND CON** 118.2**CLEARANCE DELIVERY PHONE:** For CD when ATCT is clsd ctc Tucson Apch at 520-829-6121.

PHOENIX

H-4J, L-5C

IAP, AD



CONTINUED ON NEXT PAGE

CONTINUED FROM PRECEDING PAGE

AIRSPACE: CLASS D svc 1300-0300Z; other times CLASS E.

RADIO AIDS TO NAVIGATION: NOTAM FILE TUS.

TUCSON (VH) (H) VORTACW 116.0 TUS Chan 107 N32°05.71' W110°54.89' 270° 13.5 NM to fld. 2671/12E.

VOR unusable:

050°-080° byd 30 NM blo 11,500'
 066°-076° byd 40 NM blo 11,500'
 066°-076° byd 48 NM
 077°-131° byd 40 NM
 141°-164° byd 40 NM
 191°-231° byd 40 NM
 245°-249° byd 40 NM
 290°-300° byd 40 NM blo 8,000'
 290°-300° byd 52 NM
 330°-341° byd 40 NM blo 9,000'
 330°-341° byd 52 NM
 342°-065° byd 40 NM
 350°-020° byd 30 NM blo 13,000'

TACAN AZIMUTH unusable:

050°-080° byd 30 NM blo 11,500'
 155°-165° byd 35 NM blo 13,000'
 350°-020° byd 30 NM blo 13,000'

DME unusable:

050°-080° byd 30 NM blo 11,500'
 155°-165° byd 35 NM blo 13,000'
 350°-020° byd 30 NM blo 13,000'

NDB (HW) 338 RYN N32°08.33' W111°09.69' at fld. 2420/12E. NOTAM FILE PRC. NDB unmonitored.

NDB unusable:

025°-050° byd 25 NM blo 14,500'

ILS 111.1 I-IVl Rwy 06R. Class IT.

COMM/NAV/WEATHER REMARKS: (All rys, except Ry 06L-24R when stated on the ATIS) twr frequency will be 120.35.