

GOOSE BAY (Z40) O E UTC-9(-8DT) N61°23.68' W149°50.54'

78 NOTAM FILE ENA

RWY 08-26: 3000X75 (GRVL)**RWY 08:** Road. Rgt tfc.**RWY 26:** Road.

AIRPORT REMARKS: Unattended. Rwy cond unmntd; rcmd visual insp bfr use. 808 ft lgt twr 11700 ft NNW of rwy. Lrg mil low alt ops invof R-2203, Goose Bay, Birchwood, Big Lake arpts. Mil acft mnt mult CTAF freq. See current Anchorage VFR TAC insert and Cntr NOTAMS. Rwy 08 and Rwy 26 rwy ends thr panel.

AIRPORT MANAGER: 907-246-3325**COMMUNICATIONS:** CTAF 122.9**RADIO AIDS TO NAVIGATION:** NOTAM FILE ENA.

BIG LAKE (H) (H) VORTACW 112.5 BGQ Chan 72 N61°34.17' W149°58.03' 142° 11.1 NM to fld. 179/19E.

TACAN AZIMUTH unusable:

230°-245° byd 38 blo 8,000'

DME unusable:

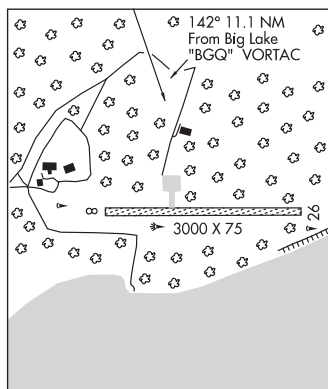
230°-245° byd 38 blo 8,000'

COMM/NAV/WEATHER REMARKS: For a toll free call to Kenai FSS dial

1-866-864-1737.

ANCHORAGE

L-1A, 3D, 4G

**GRANITE MOUNTAIN AS** (GSZ)(PAGZ) AF O E UTC-9(-8DT) N65°24.13' W161°16.89'

1313 NOTAM FILE

RWY 17-35: 3873X111 (GRVL)**RWY 35:** Hill.

MILITARY REMARKS: Unattended. CLOSED to the public. OFFICIAL BUSINESS ONLY. All civil acft operators must submit Civil Aircraft Landing Permit (CALP) application IAW Air Force Instruction 10-1001 (<http://www.e-publishing.af.mil/shared/media/epubs/afi10-1001.pdf>) at least 30 days prior to first intended ldg. Failure to obtain and have onboard approved CALP will result in fines levied against violators and reports forwarded to the FAA FSDO and U.S. Attorney's Office IAW 32 CFR 855 and USAF Operating Instructions. Ctc 611 ASUS/LRAM at DSN 317-552-1448/4176 or COM: 907-552-1448/4176 for CALPs. Mail CALP application to: Attn: 11 AF Airfield Manager, 10471 20th Street, Suite 231, JBER AFB, AK 99506. Civil Aircraft Landing Permit (CALP) ctc numbers DSN: 317-552-1448/4176 or COM: (907) 552-1448/4176, e-mail: aklanguingpermits@us.af.mil. CAUTION: Mountainous terrain (2,844') in north, east, and west quadrants. Apch from the south. Land Rwy 35 and tkf Rwy 17 only. Rwy dimensions are 3,871' X 111'. Rwy not maintained, condition unknown. Recommend visual inspection prior to ldg.

AIRPORT MANAGER: 907- 552-8757**COMMUNICATIONS:** CTAF 122.1

COMM/NAV/WEATHER REMARKS: For a toll free call to Nome FSS dial 1-800-478-8400. For a toll free call to Fairbanks FSS dial 1-866-248-6516.

NOME

L-41

GRAYLING (KGX)(PAGX) 1 S UTC-9(-8DT) N62°53.53' W160°03.98'

138 B NOTAM FILE ENA

RWY 17-35: 4000X75 (GRVL) MIRL 1.1% up S**RWY 17:** Brush.**RWY 35:** Brush. Rgt tfc.**SERVICE:** LGT ACTIVATE MIRL Rwy 17-35—CTAF.

AIRPORT REMARKS: Unattended. Rwy condition not monitored, recommend visual inspection prior to landing. Cold temperature airport. Altitude correction required at or below -23C. Wind sock and segmented circle and overgrown with brush and may be unreliable.

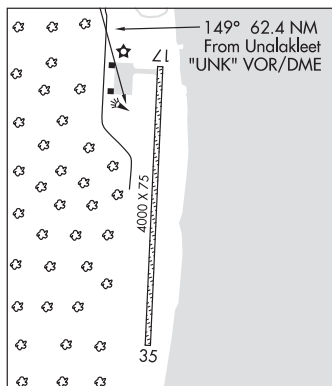
AIRPORT MANAGER: (907) 438-2416**COMMUNICATIONS:** CTAF 122.9**ANVIK RCO** 122.4 (KENAI RADIO)Ⓡ **ANCHORAGE CENTER APP/DEP CON** 118.15**RADIO AIDS TO NAVIGATION:** NOTAM FILE UNK.**UNALAKLEET (H) (H) VORW/DME** 116.9 UNK Chan 116

N63°53.52' W160°41.06' 149° 62.4 NM to fld. 436/15E.

MC GRATH

H-1A, 2I, L-3C

IAP

**GREEN'S STRIP** (See WASILLA on page 256)