

CONTINUED FROM PRECEDING PAGE

RADIO AIDS TO NAVIGATION: NOTAM FILE IKK.

NORTHBROOK (VH) (DH) VOR/DME 113.0 OBK Chan 77 N42°13.28' W87°57.10' 005° 22.5 NM to fld. 708/2W.

DME unusable:

215°-330° byd 35 NM blo 3,000'

VOR unusable:

265°-272° byd 40 NM

273°-283° byd 40 NM blo 18,000'

284°-288° byd 40 NM

(T) DME 109.2 ENW Chan 29 N42°35.94' W87°55.90' at fld. 734. NOTAM FILE ENW.

ILS 109.35 I-ENW Rwy 07L. Class IB. Unmonitored when ATCT clsd.

KINGS LAND O' LAKES (See LAND O' LAKES on page 360)

KOOKY N44°12.96' W88°23.94' NOTAM FILE ATW.

GREEN BAY

NDB (LOMW) 407 AQ 298° 5.8 NM to Appleton Intl. 752/2W. NDB unmonitored.

L-28H

L O SIMENSTAD MUNI (See OSCEOLA on page 376)

LA CROSSE RGNL (LSE)(KLSE) 4 NW UTC-6(-5DT) N43°52.76' W91°15.40'

CHICAGO

655 B Class I, ARFF Index B NOTAM FILE LSE

H-21, L-28G

RWY 18-36: H8742X150 (CONC-GRVD) S-120, D-200, 2S-175,

IAP, AD

2D-340, 2D/2D2-810 PCR 630 R/B/W/T HIRL

RWY 18: MALSR. PAPI(P4L)—GA 3.0° TCH 55'. Tree.

RWY 36: REIL. VASI(V4L)—GA 3.0° TCH 28'. Thld displcd 1131'.

Tree.

RWY 13-31: H6050X150 (ASPH-GRVD) S-120, D-200, 2S-175,

2D-340 PCR 630 F/A/X/T MIRL

RWY 13: REIL. VASI(V4L)—GA 3.0° TCH 33'. Trees.

RWY 31: REIL. VASI(V4L)—GA 3.85° TCH 44'. Thld displcd 739'.

Trees.

RWY 04-22: H5199X150 (ASPH) S-90, D-150, 2S-139, 2D-280

PCR 330 F/A/X/T HIRL

RWY 04: PAPI(P4L)—GA 4.0° TCH 29'. Pole.

RWY 22: PAPI(P4L)—GA 4.0° TCH 28'. Trees.

RUNWAY DECLARED DISTANCE INFORMATION

RWY 04: TORA-5199 TODA-5199 ASDA-5199 LDA-5199

RWY 13: TORA-5310 TODA-5310 ASDA-5310 LDA-5310

RWY 18: TORA-8105 TODA-8742 ASDA-8536 LDA-8536

RWY 22: TORA-5199 TODA-5199 ASDA-5199 LDA-5199

RWY 31: TORA-6050 TODA-6050 ASDA-6050 LDA-5310

RWY 36: TORA-8742 TODA-8742 ASDA-8564 LDA-7433

SERVICE: S4 FUEL 100LL, JET A **LGT** When ATCT clsd MIRL Rwy 13-31 preset low intst; to incr intst & actvt MALSR Rwy 18; REIL Rwy 13, 31, 36; MIRL Rwy 13-31; HIRL Rwy 18-36, Rwy 04-22—CTAF. PAPI Rwy 04, 18, & 22; VASI Rwy 13, 31, & 36 opr consly. Rwy 31 VASI unusbl byd 9 degs right of cntrln.

AIRPORT REMARKS: Attended 1200-0300Z±. Deer, waterfowl and other birds on and invof arpt. Heavy concentrations of waterfowl spring and fall. For attendant other hrs call 608-783-8359. Cold temperature airport. Altitude correction required at or below -22C. Twr 1390' AGL 6 NM southwest. Numerous twrs up to 836' AGL 4 NM southeast. Holding position for the west side of Rwy 36 apch end is set back on Twy C, see HS-1 on arpt diagram. Rwy incursion risk. Pilots are reminded to review arpt hot spot info before taxiing for dep and before landing. See TPP arpt diagram and chart supplement sxn on hot spots for additional info. Wrong rwy arrival risk, Rwy 4 and Rwy 36 apch ends are closely aligned. See TPP arpt diagram. Rwy 04-22 not avbl for skedd acr opns with more than 9 pax seats or unskedd acr at least 31 pax seats. Twy A btn Rwy 13-31 and Twy A4; Twy A4 not avbl for skedd acr opns with more than 9 pax seats or unskedd acr opns grt than 30 pax seats. 48 hr PPR for unskedd acr ops grt than 30 pax seats, call AMGR.

AIRPORT MANAGER: 608-789-7456

WEATHER DATA SOURCES: ASOS 124.95 (608) 781-9067.

COMMUNICATIONS: CTAF 118.45 ATIS 124.95 UNICOM 122.95

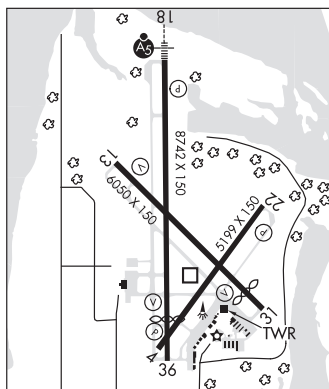
RCO 122.6 (GREEN BAY RADIO)

Ⓜ MINNEAPOLIS CENTER APP/DEP CON 128.6

TOWER 118.45 (1200-0300Z±) GND CON 121.8

CLEARANCE DELIVERY PHONE: For CD when ATCT is clsd ctc on FSS on rco freq; if una ctc Minneapolis ARTCC at 651-463-5588.

AIRSPACE: CLASS D svc 1200-0300Z±; other times CLASS E.



CONTINUED ON NEXT PAGE

RADIO AIDS TO NAVIGATION: NOTAM FILE LSE.

(T) DME 108.4 LSE Chan 21 N43°52.57' W91°15.36' at fld. 649.

DME unusable:

263°-278° byd 10 NM blo 3,000'

263°-278° byd 15 NM

329°-182°

ILS 111.1 I-LSE Rwy 18. Class IT. Unmonitored when ATCT clsd.

LA POINTE

MAJOR GILBERT FLD (4R5) 2 NE UTC-6(-5DT) N46°47.32' W90°45.52'

GREEN BAY

649 B NOTAM FILE GRB

L-141

RWY 04-22: H3000X75 (ASPH) S-12.5 MIRL 0.8% up NE

IAP

RWY 04: REIL. PAPI(P2L)—GA 3.75° TCH 45'. Trees.

RWY 22: PAPI(P2L)—GA 3.75° TCH 45'. Trees.

SERVICE: LGT Actvt REIL Rwy 04; PAPI Rwy 04 and 22—CTAF. MIRL

Rwy 04-22 preset to low SS-SR, to incr instst and actvt—CTAF.

AIRPORT REMARKS: Unattended. Deer and waterfowl on and invof arpt.

AIRPORT MANAGER: (612) 685-0445

WEATHER DATA SOURCES: AWOS-3PT 119.375 (715) 747-5519.

COMMUNICATIONS: CTAF 122.9

® MINNEAPOLIS CENTER APP/DEP CON 133.55

CLEARANCE DELIVERY PHONE: For CD ctc Minneapolis ARTCC at

651-463-5588.

RADIO AIDS TO NAVIGATION: NOTAM FILE IWD.

IRONWOOD (VL) (L) VORW/DME 108.8 IWD Chan 25 N46°31.94'

W90°07.55' 300° 30.3 NM to fld. 1229/1E.

DME unusable:

010°-020°

021°-103° byd 35 NM blo 3,700'

104°-134° byd 25 NM blo 5,000'

135°-195° byd 25 NM blo 8,000'

196°-244° byd 25 NM blo 5,000'

290°-009° byd 35 NM blo 3,700'

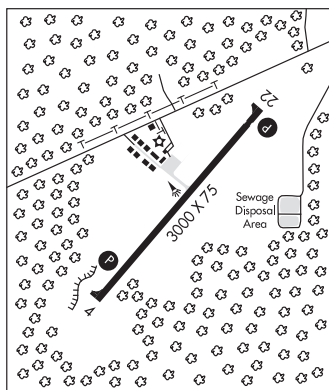
VOR unusable:

130°-204° byd 40 NM

205°-215° byd 40 NM blo 8,000'

205°-215° byd 46 NM

216°-230° byd 40 NM



LADYSMITH

RUSK CO (RCX)(KRCX) 4 NE UTC-6(-5DT) N45°29.80' W91°00.01'

GREEN BAY

1240 B NOTAM FILE RCX

L-141

RWY 14-32: H4001X75 (ASPH) S-25 MIRL

IAP

RWY 14: REIL. PAPI(P2L)—GA 3.0° TCH 29'.

RWY 32: REIL. PAPI(P2L)—GA 3.0° TCH 30'. Trees.

RWY 01-19: H3199X75 (ASPH) MIRL 0.5% up N

RWY 19: Trees.

SERVICE: S4 FUEL 100LL, JET A LGT MIRL Rwy 14-32 preset to low SS-SR; to incr intst & ACTIVATE REIL Rwy 14 & Rwy 32; PAPI Rwy 14 & Rwy 32; MIRL Rwy 01-19—CTAF.

AIRPORT REMARKS: Attended irregularly. Self svc fuel avbl 24 hrs with credit card. Occasional deer invof arpt.

AIRPORT MANAGER: 715-532-2137

WEATHER DATA SOURCES: AWOS-3 118.125 (715) 609-1301.

COMMUNICATIONS: CTAF/UNICOM 122.8

RICE LAKE RCO 122.3 (GREEN BAY RADIO)

® MINNEAPOLIS CENTER APP/DEP CON 133.65

CLEARANCE DELIVERY PHONE: For CD ctc Minneapolis ARTCC at

651-463-5588.

