

AKUTAN**AKUTAN** (7AK)(PAUT) 6 E UTC-9(-8DT) N54°08.68' W165°36.25'

129 B NOTAM FILE 7AK

RWY 09-27: H4500X75 (ASPH) S-120, D-250 MIRL 0.4% up E**SERVICE:** LGT ACTIVATE MIRL Rwy 09-27-CTAF.**AIRPORT REMARKS:** Attended 1600-0400Z. Airport located on Akun Island, shuttle to Akutan is provided by maritime helicopters. Pilots must provide own ropes for tiedown.**AIRPORT MANAGER:** (907) 581-1786**WEATHER DATA SOURCES:** AWOS-3P 129.05 (907) 302-3081. (WX CAM)**COMMUNICATIONS:** CTAF 122.9Ⓡ **ANCHORAGE CENTER APP/DEP CON** 121.4**GCO** 130.3 5 CLICKS FOR KENAI FSS. OCCASIONALLY INOPERATIVE)**RADIO AIDS TO NAVIGATION:** NOTAM FILE DUT.**DUTCH HARBOR NDB/DME (HW)** 283 DUT Chan 86 N53°54.31' W166°32.87' 057° 36.4 NM to fld. 272/9E.

DME portion unusable:

005°-080°

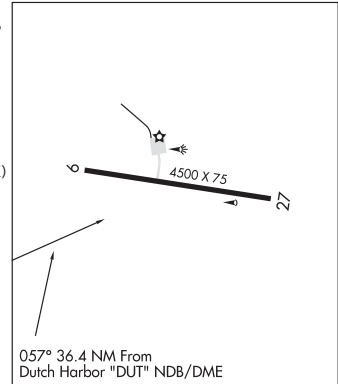
081°-330° byd 13 NM

331°-004° byd 15 NM

COMM/NAV/WEATHER REMARKS: For a toll free call to Cold Bay FSS dial 1-866-478-7250.**DUTCH HARBOR**

H-2I, L-2J

IAP

**AKUTAN SPB** (KQA) 0 S UTC-9(-8DT) N54°08.03' W165°46.70'

00 NOTAM FILE CDB

WATERWAY E-W: 10000X1000 (WATER)**SEAPLANE REMARKS:** Unattended. Operating area in Akutan Harbor. Daily heli shuttle from Akutan (7AK) on Akun Island.

Caution for driftwood and debris in seaplane opr area. Seaplane ramp is unuseable for seaplane operations at all tides.

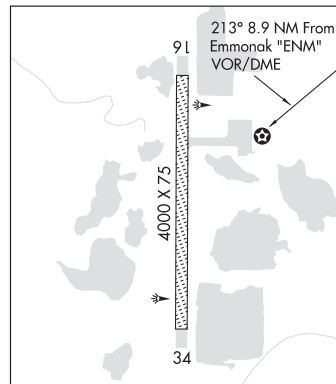
Beach at other side of harbor from ramp has large cobble but is firm and suitable for large wheeled amphibian acft, but unsuitable for float equipped acft due to the size of rocks on the beach.

AIRPORT MANAGER: 907-698-2241**WEATHER DATA SOURCES:** AWOS-3 129.05.**COMMUNICATIONS:** CTAF 122.9**DUTCH HARBOR****ALAKANUK** (AUK)(PAUK) 2 S UTC-9(-8DT) N62°40.98' W164°43.33'

22 B NOTAM FILE ENA

RWY 16-34: 4000X75 (GRVL-DIRT) MIRL**RWY 16:** Brush.**SERVICE:** LGT ACTIVATE MIRL Rwy 16-34 and Rot bcn-CTAF.**AIRPORT REMARKS:** Unattended. Rwy condition not monitored, recommend visual inspection prior to landing.**AIRPORT MANAGER:** (907) 625-1025**COMMUNICATIONS:** CTAF 122.9**RADIO AIDS TO NAVIGATION:** NOTAM FILE ENM.**EMMONAK (H) (H) VORW/DME** 117.8 ENM Chan 125 N62°47.08' W164°29.25' 213° 8.9 NM to fld. 17/14E.**COMM/NAV/WEATHER REMARKS:** For a toll free call to Kenai FSS dial 1-866-864-1737.**BETHEL**

H-1A, 2I, L-3B

**ALASKA RGNL HOSPITAL HELIPORT** (See ANCHORAGE on page 42)