

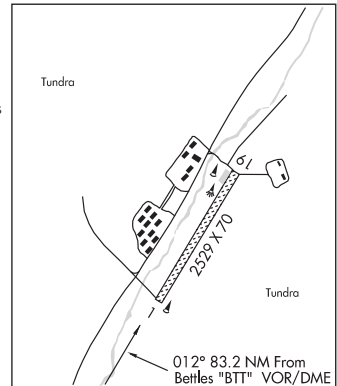
CHANDALAR CAMP**CHANDALAR SHELF** (5CD) 0 W UTC-9(-8DT) N68°03.93' W149°34.78'**FAIRBANKS**

3222 NOTAM FILE FAI

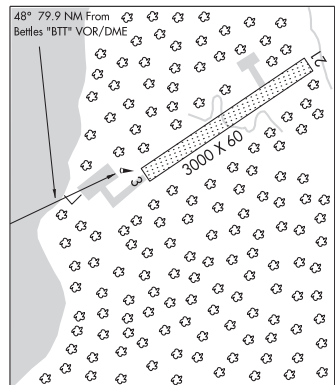
RWY 01-19: 2529X70 (GRVL)**RWY 01:** Brush.**RWY 19:** Brush.**AIRPORT REMARKS:** Unattended. Rwy condition not monitored, recommend visual inspection prior to landing. Bear on and in vof rwy. Arpt lctd in mountain valley high terrain in all quads causing turbulent winds. Grass growing in rwy edges.**AIRPORT MANAGER:** 907-451-2207**COMMUNICATIONS:** CTAF 122.9**RADIO AIDS TO NAVIGATION:** NOTAM FILE BTT.**BETTLES (H) (H) VOR/DME** 116.0 BTT Chan 107 N66°54.30' W151°32.15' 012° 83.2 NM to fld. 637/20E.

VOR AZIMUTH & DME unusable:

047°-077° byd 24 NM

COMM/NAV/WEATHER REMARKS: For a toll free call to Fairbanks FSS dial 1-866-248-6516.**CHANDALAR LAKE** (WCR)(PALR) 0 N UTC-9(-8DT) N67°30.27' W148°28.99'**FAIRBANKS**

1920 NOTAM FILE WCR

L-4J**RWY 03-21:** 3000X60 (GRVL-DIRT)**RWY 03:** Brush.**RWY 21:** Brush.**AIRPORT REMARKS:** Unattended. No winter maintenance, ski equipped acft only. Rwy not maintained and condition not monitored, recommend visual inspection prior to landing. Rwy 03 and Rwy 21 NSTD markings, thlds marked with reflective boards, no edge markers. Rwy 03-21 slopes down hill 4% from N to S.**AIRPORT MANAGER:** 907-452-2207**COMMUNICATIONS:** CTAF 122.9**COMM/NAV/WEATHER REMARKS:** For a toll free call to Fairbanks FSS dial 1-866-248-6516.**CHANDALAR SHELF** (See CHANDALAR CAMP on page 73)