

**SANTA MONICA MUNI** (SMO)(KSMO) 3 E UTC-8(-7DT) N34°00.95' W118°27.08'

**LOS ANGELES**

170 B TPA—See Remarks NOTAM FILE SMO

**COPTER**

**RWY 03-21:** H3500X150 (ASPH-GRVD) S-40, D-60, 2D-105 MIRL

**L-3E, 4G, 7B, A**

1.2% up NE

**IAP, AD**

**RWY 03:** PAPI(P4L)—GA 3.42° TCH 28'. Rgt tfc.

**RWY 21:** REIL. PAPI(P4L)—GA 3.5° TCH 45'.

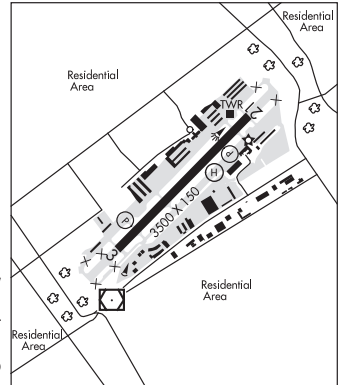
**RUNWAY DECLARED DISTANCE INFORMATION**

**RWY 03:** TORA-3500 TODA-3500 ASDA-3500 LDA-3500

**RWY 21:** TORA-3500 TODA-3500 ASDA-3500 LDA-3500

**SERVICE:** S4 **FUEL** 100LL, JET A, UL94 **OX** 1, 3 **LGT** When twr clsd  
ACTIVATE REIL Rwy 21; MIRL Rwy 03-21—CTAF.

**NOISE:** Continuous noise ordinance in effect ctc noise office for procedures 310-458-8692. Noise limits all acft: Pure Jet and Stage II (with/without hush kits) prohibited. Maximum noise limit 95.0 DBA single event noise exposure level (senel) RCRDD 2200' extended centerline. Curfew, no engine starts, APU, or tkofs except PPR lifeguard flights 0700-1500Z† Mon-Fri and 0700-1600Z† weekends. PPR ex-military acft ctc arpt manager 310-458-8692. VFR departures Rwy 21 turn left 10° over SMO VOR then turn right 225°. If departure north, no right turns before reaching shoreline. Rwy 03 departure no turns prior to 405 freeway located 1 mile E. Rwy 03-21 dep end approximately 1000' from residential homes. Extended high power settings on run-up or dep negatively impact the community.



**AIRPORT REMARKS:** Attended continuously. 100LL full svc only. UL94 avbl at self-serve island. PPR rqrd for DW acft in excess of 60,000 lbs crtfyd max ldg wt, ctc amgr 310-458-8692. Helicopter flight training ops prohibited, helicopter ops apch boundry at midfield at or above 900' MSL. No touch/go, stop/go, or low apch permitted on Sat, Sun, holidays, weekdays SS-1500Z†. IFR jets and turboprops ctc ground prior to engine start. Tsnt parking south side, next to bcn. Turbine acft and acft over 12,000 lbs prohibited on south side transit parking. Eng maint run-up: Jets and turboprops north side, wi 300 ft east of Twy A4. Piston sncls and twins on south side, wi 300 ft east of Twy B4. 1700-0100Z† only. TPA-1370(1200) single engine, 1870(1700) twin engine. Intersection departures and formation landings/departures prohibited. The paved areas preceding the Rwy 03-21 thlds are not avbl for ldg, tkof, or taxi Ops. The paved areas are now blast pads created from thlds relocation and rwy len reduction in December 2017. Acft must now exit the rwy at designated connector twys. The continuous rwy exit system is no longer avbl.

**AIRPORT MANAGER:** (310) 458-8692

**WEATHER DATA SOURCES:** ASOS (310) 392-6453 LAWRS.

**COMMUNICATIONS:** CTAF 120.1 ATIS 119.15 310-450-4620 UNICOM 122.95

® **SOCAL APP CON** 124.3 (101°-245° SMO) 124.9 (069°-100° LAX) 125.2 (246°-341° LAX) 135.05 (342°-068°)

**TOWER** 120.1 (1500-0500Z†) **GND CON** 121.9

® **SOCAL DEP CON** 125.2

**CLEARANCE DELIVERY PHONE:** For CD when ATCT clsd ctc SoCal Apch at 800-448-3724.

**AIRSPACE:** CLASS D svc 1500-0500Z†; other times CLASS G.

**RADIO AIDS TO NAVIGATION:** NOTAM FILE SMO.

(VL) (L) **VORW/DME** 110.8 SMO Chan 45 N34°00.61' W118°27.40' at fld. 114/15E.

VOR unusable:

070°-080° byd 30 NM blo 7,000'

073°-086° byd 40 NM

144°-146° byd 40 NM

259°-061° byd 40 NM

265°-275° byd 25 NM blo 14,000'

275°-005° byd 30 NM blo 14,000'

DME unusable:

070°-080° byd 30 NM blo 7,000'

265°-275° byd 25 NM blo 14,000'

275°-005° byd 30 NM blo 14,000'

• • • • •

**HELIPAD H1:** H40X40 (ASPH) PERIMETER LGTS

**HELIPORT REMARKS:** Helicopter flt training opr prohibited, helicopters cross arpt boundary at 900' MSL. Rwy H1 perimeter lgts.