

**CHENA RIVER SPB** (Z25) 3 W UTC-9(-8DT) N64°49.97' W147°50.90'

**FAIRBANKS**

440 TPA—1000(560) NOTAM FILE FAI

**WATERWAY N-S:** 5000X300 (WATER)

**WATERWAY E-W:** 3000X300 (WATER)

**SEAPLANE REMARKS:** Unattended. Operating area in Chena River north and west of Fairbanks Intl arpt. PVT 900' X 50' grass strip adjacent river. All property along river bank is privately owned. Public access to river consists of one small gravel ramp. Public access ramp is at north end of Ravenwood Ave. N64-49.9' W147-52.5'

**COMMUNICATIONS:** CTAF 122.9

**COMM/NAV/WEATHER REMARKS:** For a toll free call to Fairbanks FSS dial 1-866-248-6516, for local call to Fairbanks FSS dial 907-474-0137.

**FAIRBANKS INTL** (FAI)(PAFA) 3 SW UTC-9(-8DT) N64°48.92' W147°51.40'

**FAIRBANKS**

439 B LRA Class I, ARFF Index C NOTAM FILE FAI

**H-1B, 2K, L-3A, 3D, 4J**

**RWY 02L-20R:** H11800X150 (ASPH-GRVD) S-75, D-220, 2D-580,

**IAP, DIAP, AD**

2D/2D2-1100 PCR 780 F/B/X/T HIRL CL

**RWY 02L:** ALSF2. TDZL. PAPI(P4L)—GA 3.0° TCH 73'. RVR-TMR Thld dspcd 750'. Tree.

**RWY 20R:** MALSR. PAPI(P4L)—GA 3.0° TCH 74'. RVR-TMR Thld dspcd 750'. Tree.

**RWY 02R-20L:** H4510X75 (ASPH) S-21, D-40 PCR 46 F/B/X/T

MIRL No Part 121/Part 380 Ops

**RWY 02R:** PAPI(P4L)—GA 3.0° TCH 40'. Trees. Rgt tfc.

**RWY 20L:** REIL. PAPI(P4L)—GA 3.0° TCH 42'.

**RWY 02-20:** 2900X75 (GRVL) No Part 121/Part 380 Ops

**RUNWAY DECLARED DISTANCE INFORMATION**

**RWY 02L:**TORA-11800 TODA-12800 ASDA-11800 LDA-11050

**RWY 20R:**TORA-11800 TODA-12800 ASDA-11800 LDA-11050

**SERVICE:** S4 FUEL 100LL, JET A1 OX 1, 2 LGT Rwy 20R PAPI unusable byd 8° right of centerline.

**NOISE:** Noise abatement procedures in efct 0700-1700Z; lrg, turbine & hvy arr Rwy 02L; dep Rwy 20R based on wind. Eng runup lct -arpt ops.

**AIRPORT REMARKS:** Attended continuously. See additional pages under

notices for TRSA and Fairbanks area information. Ctn: Avoid Indg on twy; N/S twy parl to Rwy 02L/20R w side. Transient parking wingspan less than 79 ft E ramp. Tsnt prkg w ramp NA. Ltd tsnt float plane prkg—907-455-4571. Medivac & tsnt hel prkg or info—907-451-2300. Ctn: Snow removal equip Oct 1 to May 15. Mil contr fuel avbl. Birds invof Spring-Fall. Tfc pat alt (single engine reciprocating acft) 1500' MSL. Tfc pat alt (all multi-engine, large and turbine-powered acft) 2000' MSL. Cold temperature airport. Altitude correction required at or below -29C. Rwy hold lines obscured Oct 1-April 1. Rwy 02R-20L is limited for use by acft design Group B II, acft or smaller. Rwy 02R-20L & rwy grvl/ski 02-20 not avbl for scheduled or unscheduled ACR ops greater than 30 pax seats. Rwy 02-20 summer & ski strip winter use; avbl lcl NOTAM & ATCT bfr arr or dep. Rwy 02W/20W cttld; apreç—ATCT 118.3. Ctc CD asap aft eng start. Frozen in winter; sfc unmt. Thr buoys 500 ft fm N & S shores & mark waterlane. Step tax outside of waterlane NA. E of waterlane unctld; tax at pilot discretion. PPR mil ops hvy cargo or trml apn -arpt ops. Twy B security gate—ACTV 121.75 OR 907-451-2300. Compass rose not calibrated.

**AIRPORT MANAGER:** 907-474-2500

**WEATHER DATA SOURCES:** ASOS 124.4 (907) 621-7609. (WX CAM)

**COMMUNICATIONS:** SFA ATIS 124.4 907-456-1244 (TIE-IN FSS FAIRBANKS FAI-NOTAM FAI)

**RADIO** 122.2 124.1 132.65 (E)

Ⓡ **APP CON** 125.35 363.2 (180°-359°) 127.1 251.1 (360°-179°) 119.85 (E)

**TOWER** 118.3 257.8 (E) **GND CON** 121.9 **CLNC DEL** 127.6

Ⓡ **DEP CON** 125.35 363.2 (180°-359°) 127.1 251.1 (360°-179°) 327.1 (E)

**SUAIS** (Eielson Range Control) 125.3.

**AIRSPACE:** CLASS D.

TRSA svc ctc **APP CON**

**RADIO AIDS TO NAVIGATION:** NOTAM FILE FAI.

(H) (H) **VORTACW** 108.6 FAI Chan 23 N64°48.00' W148°00.72' 056° 4.1 NM to fld. 1526/21E.

TACAN AZIMUTH unusable:

065°-100° byd 30 NM

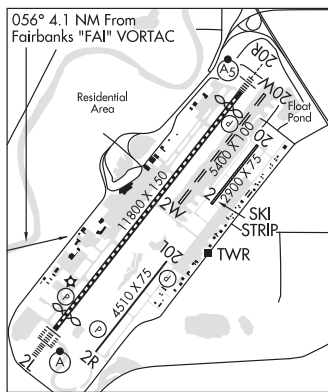
270°-330° byd 10 NM blo 10,000'

270°-330° byd 30 NM

**CHENA NDB (HW)** 257 CUN N64°50.32' W147°29.70' 245° 9.4 NM to fld. 462/17E.

**ILS/DME** 109.1 I-CNA Chan 28 Rwy 02L. Class IIIE. DME unusable byd 025° left of course.

**ILS/DME** 110.3 I-FAI Chan 40 Rwy 20R. Class IIE.



**CONTINUED ON NEXT PAGE**

## CONTINUED FROM PRECEDING PAGE

**COMM/NAV/WEATHER REMARKS:** For a toll free call to Fairbanks FSS dial 1-866-248-6516, for a local call to Fairbanks FSS dial (907) 474-0137. TACAN located N64°48.01' W148°00.81'. (Although collocated facilities antennae are at different positions). Ops in MOA's e of Fairbanks- Eielson Range Control 125.3/126.3 or 1-800-758-8723. NWS weather balloon launch site 2000 feet west of midfield Runway 02L-20R. Launches are twice daily at 1100 and 2300 UTC.

**WATERWAY 02W-20W:** 5400X100 (WATER)

**WATERWAY 02W:** Fence.

**WATERWAY 20W:** Fence.

**SEAPLANE REMARKS:** Waterlane is controlled; ctc ATCT on freq 118.3 for approval. Waterlane threshold buoys are 500 from N and S shores and mark waterlane. Step taxi prohibited outside of waterlane. East of waterlane is uncontrolled; aircraft may taxi in this area at pilot discretion. Recommend ctc clnc del as soon as practical after eng start. Sfc frozen in winter, not monitored. Limited transient float plane parking avbl ctc 907-455-4571. Migratory birds in the vicinity of arpt during Spring thru Fall.

**GOLD KING CREEK** (AK7)(PAAN) 39 SE UTC-9(-8DT) N64°11.88' W147°55.72' **FAIRBANKS**

1720 NOTAM FILE FAI

**RWY 09-27:** 2558X17 (GRVL-DIRT)

**RWY 09:** Trees.

**RWY 27:** Brush.

**AIRPORT REMARKS:** Unattended. Rwy condition not monitored, recommend visual inspection prior to landing. 20' trees on both sides of rwy within 60-70' of centerline. Rwy 09-27 rocks up to 6" on sfc. No services avbl.

**AIRPORT MANAGER:** (907) 451-5280

**COMMUNICATIONS:** CTAF 122.9

**COMM/NAV/WEATHER REMARKS:** For a toll free call to Fairbanks FSS dial 1-866-248-6516, for local call to Fairbanks FSS dial 907-474-0137.

**LAKLOEY AIR PARK** (AK22) PVT 6 E UTC-9(-8DT) N64°49.30' W147°31.30' **FAIRBANKS**

475 NOTAM FILE Not insp.

**RWY 06-24:** 4000X50 (GRVL)

**RWY 06:** Trees. Rgt tfc.

**AIRPORT REMARKS:** Unattended. Rwys not maintained or monitored, recommend visual inspection prior to using. No facilities. Unusable for wheels in the fall, winter, spring. PPR for transient acft, write to Lakloey Airpark, P.O. Box 58388, Fairbanks AK 99711.

**AIRPORT MANAGER:** 907-488-1724

**COMMUNICATIONS:** CTAF 125.0

**COMM/NAV/WEATHER REMARKS:** For a toll free call to Fairbanks FSS dial 1-866-248-6516, for local call to Fairbanks FSS dial 907-474-0137.

**WATERWAY 06W-24W:** 3400X100 (WATER)

**WATERWAY 06W:** Trees. Rgt tfc.

**METRO FLD** (MTF) PVT 2 S UTC-9(-8DT) N64°48.41' W147°45.75' **FAIRBANKS**

432 TPA-1000(568) NOTAM FILE

**RWY 06-24:** H4600X80 (ASPH-GRVL)

**RWY 06:** Road. Rgt tfc.

**AIRPORT REMARKS:** Unattended. Rwy 06-24 2600 ft x 30 ft paved on Rwy 06 end. Pavement very rough. Rwy condition not monitored, recommend visual inspection prior to use. 140' crane btn rwy and float pond summer months. Ditch and berm 40' from Rwy 06.

**AIRPORT MANAGER:** 907-388-3053

**WEATHER DATA SOURCES:** SAWRS.

**COMMUNICATIONS:** CTAF 118.3

**SUAIS** 125.3 126.3 (1-800-758-8723).

**COMM/NAV/WEATHER REMARKS:** For a toll free call to Fairbanks FSS dial 1-866-248-6516, for local call to Fairbanks FSS dial 907-474-0137.