

LARSEN BAY (2A3)(PALB) 0 SE UTC-9(-8DT) N57°32.11' W153°58.60'

KODIAK

87 B NOTAM FILE ENA

RWY 04-22: 2690X75 (GRVL) MIRL 0.5% up SW

RWY 04: Brush.

RWY 22: Brush.

SERVICE: LGT ACTIVATE MIRL Rwy 04-22 and rotating bcn—CTAF.

AIRPORT REMARKS: Unattended. Rwy condition not monitored, recommend visual inspection prior to using. Loose 3' to 6' rocks on Southeast rwy edge full length. Rwy 04 ovrn soft with deep ruts. Rwy 04-22 slopes down toward midpoint. Rwy 04 and Rwy 22 thld marked with lgts, plastic reflectors and thld panels.

AIRPORT MANAGER: 907-487-4952

COMMUNICATIONS: CTAF 122.8

RADIO AIDS TO NAVIGATION: NOTAM FILE ADQ.

KODIAK (H) VOR/W/DME 117.1 ODK Chan 118 N57°46.50'
W152°20.39' 241° 54.7 NM to fld. 133/14E.

VOR unusable:

190°-310° byd 15 NM blo 12,000'

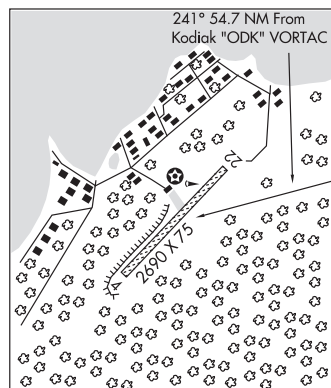
DME unusable:

154°-265° byd 15 NM blo 12,000'

266°-305°

306°-341° byd 15 NM blo 12,000'

COMM/NAV/WEATHER REMARKS: For a toll free call to Kenai FSS dial 1-866-864-1737.



LAWING (9Z9) 1 N UTC-9(-8DT) N60°24.71' W149°22.16'

ANCHORAGE

484 NOTAM FILE ENA

RWY 15-33: 2355X60 (GRVL) 0.6% up NW

RWY 15: Trees.

RWY 33: Tree.

AIRPORT REMARKS: Unattended. Maintenance ireg. Rwy cond unmon, rcmd visual insp bfr use. Ovrvn downslope 5%. Vehicles on rwy. Rwy 15-33 thr panels dmgd, undulates, soft durg spring, ruts E side. Rwy 15-33 edge not mkd. Windsock blw treeline, may be unreliable.

AIRPORT MANAGER: 907-288-2428

COMMUNICATIONS: CTAF 122.9

RADIO AIDS TO NAVIGATION: NOTAM FILE ENA.

KENAI (H) VOR/W/DME 117.6 ENA Chan 123 N60°36.88'
W151°11.71' 083° 55.5 NM to fld. 115/19E.

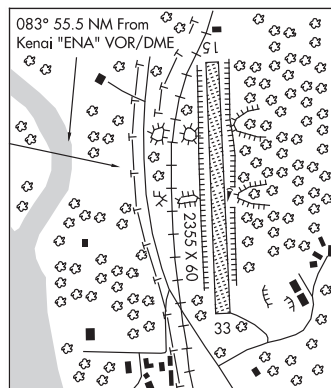
VOR unusable:

348°-015° byd 20 NM

DME unusable:

355°-041° byd 35 NM blo 2,000'

COMM/NAV/WEATHER REMARKS: For a toll free call to Kenai FSS dial 1-866-864-1737.



LAWRENCE AIRSTRIP (See WASILLA on page 253)