

ST PAUL ISLAND (SNP)(PASN) 3 NE UTC-9(-8DT) N57°09.98' W170°13.35'**DUTCH HARBOR**

66 B NOTAM FILE SNP

H-21, L-21, 3B

RWY 18-36: H6500X150 (ASPH-GRVD) HIRL

IAF

RWY 18: MALSF. PAPI(P4R)—GA 3.0° TCH 46'. Road.**RWY 36:** MALSF. PAPI(P4L)—GA 3.0° TCH 52'. Fence. Rgt tfc.**SERVICE:** FUEL JET A LGT ACTVT MALSF Rwy 18 and Rwy 36; PAPI Rwy 18 and Rwy 36; HIRL Rwy 18-36—CTAF.**AIRPORT REMARKS:** Unattended. Rwy 36 rwy end three 100' wind turbines 1/4 mi SW of apch end. 45' twr 350' W and 1000' N. 625' lgtd twr one mi SW. Rwy 18-36 1000' safety area on N and S end. Avoid flt blw 1000' May 14 - Sep 14 in areas with active bird populations and otr times in areas with coastal seal rookeries. Wx bln launch fac on arprt, see inside back cover for oprn details.**AIRPORT MANAGER:** 907-581-1786**WEATHER DATA SOURCES:** ASOS 135.75 (907) 560-7613. (WX CAM)**COMMUNICATIONS:** CTAF 122.3

RCO 122.45 (KENAI FSS)

ANCHORAGE CENTER APP/DEP CON 119.1 339.8**RADIO AIDS TO NAVIGATION:** NOTAM FILE SNP.**NDB/DME (HW)** 314 SPY Chan 36 N57°09.42'

W170°13.98' at fld. 31/10E.

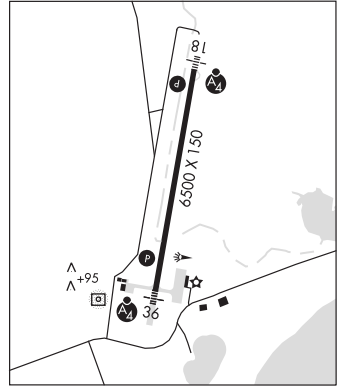
range 150 mi

DME portion unusable:

015°-035° byd 15 NM blo 9,000'

215°-280° byd 25 NM blo 8,000' and 280-015 byd 20 NM blo 9,000'

ILS 109.9 I-PAU Rwy 36. Class IE. LOC Rwy 36 unusable byd 25° left and right of course.

COMM/NAV/WEATHER REMARKS: For a toll free call to Kenai FSS dial 1-866-864-1737.**SALMON LAKE** (Z81) 0 NW UTC-9(-8DT) N64°54.54' W165°00.88'**NOME**

509 NOTAM FILE OME

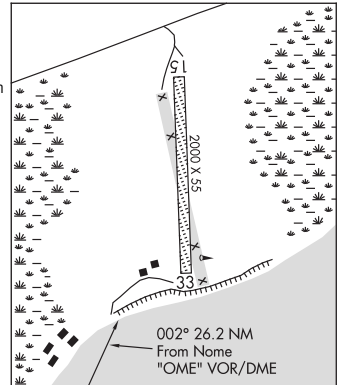
RWY 15-33: 2000X55 (GRVL) 1.7% up N**RWY 15:** Brush.**RWY 33:** Road.**AIRPORT REMARKS:** Unattended. Rwy maint NA. Rwy cond unmt, rcmd visual insp bfr use. High trrn all quads. Rwy 15 and Rwy 33 marked with cones and thr panels. Rwy 15-33 slopes 40 ft uphill SE to NW. Rwy 15-33 soft when wet. Rwy 15-33 nmrs 6 in rocks. Rwy 33 rwy end rocky.**AIRPORT MANAGER:** 907-443-3431**COMMUNICATIONS:** CTAF 122.9**RADIO AIDS TO NAVIGATION:** NOTAM FILE OME.**NOME (H) (H) VORW/DME** 115.0 OME Chan 97 N64°29.11'

W165°15.19' 002° 26.2 NM to fld. 95/11E.

COMM/NAV/WEATHER REMARKS: For a toll free call to Nome FSS dial

1-800-478-8400. For a toll free call to Fairbanks FSS dial

1-866-248-6516.

**SAN JUAN (UGANIK) SPB** (WSJ) 0 W UTC-9(-8DT) N57°43.82' W153°19.24'**KODIAK**

00 NOTAM FILE ADQ

WATERWAY N-S: 10000X2000 (WATER)**SEAPLANE REMARKS:** Unattended. Waterfowl invof Indg area. Dock or shore line near the cannery suitable for safe seaplane ops.

Seaplane dock has been destroyed, boat dock is not safe for seaplane docking. Heavy swells during NW winds.

COMMUNICATIONS: CTAF 122.8**RADIO AIDS TO NAVIGATION:** NOTAM FILE ADQ.**KODIAK (H) (H) VORW/DME** 117.1 ODK Chan 118 N57°46.50' W152°20.39' 252° 31.6 NM to fld. 133/14E.

VOR unusable:

190°-310° byd 15 NM blo 12,000'

DME unusable:

154°-265° byd 15 NM blo 12,000'

266°-305°

306°-341° byd 15 NM blo 12,000'