

TAKOTNA (TCT)(PPCT) 1 E UTC-9(-8DT) N62°59.58' W156°01.78'**MC GRATH**

423 B NOTAM FILE ENA

L-3C

RWY 04-22: 3300X60 (GRVL) MIRL**SERVICE:** LGT ACTIVATE MIRL Rwy 04-22 and rotating bcn—CTAF.**AIRPORT REMARKS:** Unattended. Rwy condition not monitored, recommend visual inspection before using. Rwy 04-22 multiple lateral cracks full length and width of rwy. Uneven surface, dips, heaves and humps full length and width of rwy. Rwy 04-22 NSTD mkgs: Rwy mkd with reflective cones and markers.**AIRPORT MANAGER:** 907-524-3241**COMMUNICATIONS:** CTAF 122.9**RADIO AIDS TO NAVIGATION:** NOTAM FILE MCG.**MC GRATH (H) (H) VORTAC** 115.5 MCG Chan 102 N62°57.06'
W155°36.68' 264° 11.7 NM to fld. 344/19E.**TACAN AZIMUTH unusable:**

014°-019° byd 19 NM blo 7,000'

040°-050° byd 21 NM blo 5,000'

144°-194° byd 6 NM blo 9,000'

195°-223° byd 28 NM blo 6,000'

224°-261° byd 12 NM blo 10,000'

262°-294° byd 25 NM blo 7,000'

295°-314° byd 21 NM blo 8,000'

DME unusable:

014°-019° byd 19 NM blo 7,000'

040°-050° byd 21 NM blo 5,000'

144°-194° byd 6 NM blo 9,000'

195°-223° byd 28 NM blo 6,000'

224°-261° byd 12 NM blo 10,000'

262°-294° byd 25 NM blo 7,000'

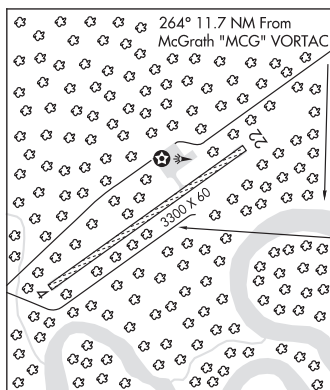
295°-314° byd 21 NM blo 8,000'

VOR unusable:

171°-260° byd 6 NM

171°-260° within 6 NM blo 4,000'

261°-170° byd 20 NM

COMM/NAV/WEATHER REMARKS: For a toll free call to Kenai FSS dial 1-866-864-1737.**TAKU HARBOR SPB** (A43) 0 N UTC-9(-8DT) N58°04.15' W134°00.92'**JUNEAU**

00 NOTAM FILE JNU

WATERWAY NE-SW: 3000X1000 (WATER)**SEAPLANE REMARKS:** Unattended. Float space lmtd or NA due to boats. CAUTION: Wing and tail clnc to dock and pier.**AIRPORT MANAGER:** (907)586-5255**COMMUNICATIONS:** CTAF 122.9**COMM/NAV/WEATHER REMARKS:** For a toll free call to Juneau FSS dial 1-866-297-2236.**TAKU LODGE SPB** (TKL)(PFTK) 0 E UTC-9(-8DT) N58°29.38' W133°56.61'**JUNEAU**

00 NOTAM FILE JNU

WATERWAY NE-SW: 5000X500 (WATER)**SEAPLANE REMARKS:** Attended summer months dalgt hrs. Otters occupy lodge float arr & dep 15 min intervals. Pub dock & safe shoreline aces NA. Mountains northwest and southeast. Shallow at low tide; rcmd river chnl lndg. Summer ops only. land in river channel; summer oprs only.**AIRPORT MANAGER:** 907-586-6275**COMMUNICATIONS:** CTAF/UNICOM 123.05**COMM/NAV/WEATHER REMARKS:** For a toll free call to Juneau FSS dial 1-866-297-2236.**TALKEETNA****BIRCH CREEK LANDING** (51AK) PVT 6 SSE UTC-9(-8DT) N62°14.54' W150°03.95'**ANCHORAGE**

400 NOTAM FILE Not insp.

RWY 16-34: 2500X75 (TURF)**AIRPORT REMARKS:** Unattended. PPR before landing. All acft monitor and announce intentions on freq 123.6. Wind indicator SW of rwy. 200' cell 1/2 mile NW of rwy with white flashing lgts simultaneously. SPB ops on fish lake 1/2 mile N of rwy.**AIRPORT MANAGER:** 907-355-4808**COMMUNICATIONS:** CTAF 123.6**COMM/NAV/WEATHER REMARKS:** For a toll free call to Kenai FSS dial 1-866-864-1737.