

TAZLINA/SMOKEY LAKE SPB (5AK) 0 E UTC-9(-8DT) N62°03.81' W146°26.97'
2415 NOTAM FILE ENA

ANCHORAGE

WATERWAY 06W-24W: 2280X600 (WATER)

SEAPLANE REMARKS: Attended daylight. Lodge clsd; Docks NA; Pvt ramp and hangar SW of lodge.

AIRPORT MANAGER: 907-822-3061

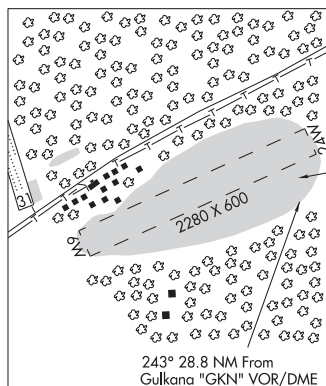
COMMUNICATIONS: CTAF 122.9

RADIO AIDS TO NAVIGATION: NOTAM FILE GKN.

GULKANA (H) (H) VOR/DME 115.6 GKN Chan 103 N62°09.23'

W145°26.84' 243° 28.8 NM to fid. 1549/17E.

COMM/NAV/WEATHER REMARKS: For a toll free call to Kenai FSS dial 1-866-864-1737.



TED STEVENS ANCHORAGE INTL (See ANCHORAGE on page 47)

TELIDA (2K5) 0 S UTC-9(-8DT) N63°22.74' W153°17.05'
650 NOTAM FILE ENA

MC GRATH

RWY 02-20: 1900X40 (TURF-DIRT) 0.5% up NE

RWY 02: Trees.

RWY 20: Trees.

AIRPORT REMARKS: Unattended. Wildlife on and invof rwy. Rwy cond unmnt; rcmd visual insp bfr use. Blowing dust alg rwy. Rwy 02-20 vrbl btn turf, dirt and sand. Rwy 02-20 150' SW end unusbl due to brush, trees, dips, humps and +2' dunes. 900' NE end soft. Rwy 02-20 irreg, rutted. Soft and unstbl due to shifting snd.

COMMUNICATIONS: CTAF 122.9

COMM/NAV/WEATHER REMARKS: For a toll free call to Kenai FSS dial 1-866-864-1737.

