

TOLSONA LAKE SPB (58A) 0 N UTC-9(-8DT) N62°06.80' W146°02.46'

ANCHORAGE

2000 NOTAM FILE ENA

WATERWAY NW-SE: 4000X1500 (WATER)

SEAPLANE REMARKS: Unattended. SPB ops. Lndg strip E side of lake is pvt.

Use pub easement to acces Tolsona Lake.

AIRPORT MANAGER: 907-269-8400

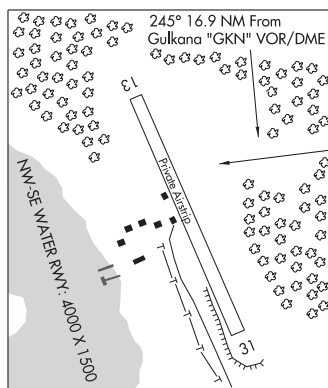
COMMUNICATIONS: CTAF 122.9

RADIO AIDS TO NAVIGATION: NOTAM FILE GKN.

GULKANA (H) (H) VOR/DME 115.6 GKN Chan 103 N62°09.23'

W145°26.84' 245° 16.9 NM to fid. 1549/17E.

COMM/NAV/WEATHER REMARKS: For a toll free call to Kenai FSS dial 1-866-864-1737.

**TOTATLANIKA RIVER** (9AK) 2 SW UTC-9(-8DT) N64°01.54' W148°31.34'

FAIRBANKS

2717 NOTAM FILE FAI

RWY 07-25: 780X30 (GRVL)

RWY 07: Brush.

RWY 25: Brush.

AIRPORT REMARKS: Unattended. Emerg use only; 50 ft rise and falls; extremely hazus. Lnd Rwy 25, dep Rwy 07; downhill slope W to E. Lctd on hill; exp svr turb. Brush E end. Rwy 07-25 4 in rough rock. Wind sock inop.

COMMUNICATIONS: CTAF 122.9

RADIO AIDS TO NAVIGATION: NOTAM FILE ENN.

NENANA (H) (H) VORTACW 115.8 ENN Chan 105 N64°35.40'

W149°04.37' 136° 36.9 NM to fid. 1601/21E.

VOR unusable:

086°-096° byd 34 NM blo 5,000'

097°-105°

310°-335° byd 33 NM blo 5,000'

336°-360° byd 33 NM blo 4,000'

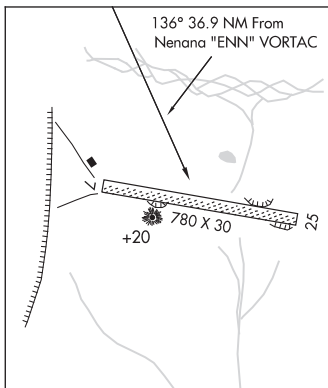
TAC AZM unusable:

097°-105°

DME unusable:

097°-105°

COMM/NAV/WEATHER REMARKS: For a toll free call to Fairbanks FSS dial 1-866-248-6516.

**TRAPPER CREEK/TALKEETNA****ERA CHULITNA RIVER HELIPORT** (61AK) PVT 19 N UTC-9(-8DT) N62°34.05' W150°14.15'

ANCHORAGE

960 NOTAM FILE Not insp.

HELIPAD H1: 20X20 (TURF)

HELIPAD H2: 20X20 (TURF)

HELIPORT REMARKS: Attended May-Sep 1700-0500Z±.

AIRPORT MANAGER: 907-550-8600

COMMUNICATIONS: CTAF 122.9

COMM/NAV/WEATHER REMARKS: For a toll free call to Kenai FSS dial 1-866-864-1737.

TREASURE CHEST (See KENAI on page 139)**TRIDENT BASIN SPB** (See KODIAK on page 148)**TRIPOD** (See ALEKNAGIK on page 39)