

TWIN HILLS (A63) 0 E UTC-9(-8DT) N59°04.47' W160°16.50'

82 B NOTAM FILE ENA

RWY 18-36: 3000X60 (GRVL) MIRL 1.3% up N

RWY 18: Rgt tfc.

RWY 36: Brush.

SERVICE: LGT ACTVT MIRL Rwy 18-36 and rotating bcn—CTAF.

AIRPORT REMARKS: Unattended. Rwy cond unmt, rcmd visual insp bfr to use. Turb psbl when Indg S due to N blud. Rwy 18-36 slopes 2% uphill to north end.

AIRPORT MANAGER: 907-842-5511

COMMUNICATIONS: CTAF 122.5

RADIO AIDS TO NAVIGATION: NOTAM FILE TOG.

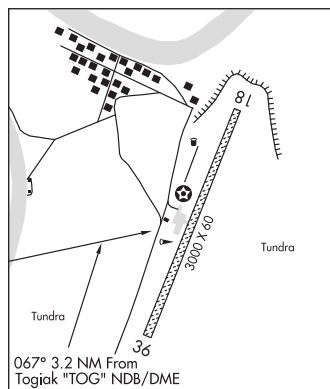
TOGIAK NDB/DME (HW) 393 TOG Chan 114 N59°03.83'
W160°22.54' 067° 3.2 NM to fld. 11/11E.

DME unusable:

225°-270° byd 32 NM blo 5,700'

271°-359° byd 32 NM blo 6,700'

COMM/NAV/WEATHER REMARKS: For a toll free call to Kenai FSS dial 1-866-864-1737.



KODIAK
L-21, 3C

TYONEK

NIKOLAI CREEK (9AK3) PVT 10 SW UTC-9(-8DT) N61°00.83' W151°26.93'

30 NOTAM FILE

RWY 06-24: 4100X75 (GRVL)

RWY 06: Wind cone.

RWY 24: Trees.

AIRPORT REMARKS: Unattended.

AIRPORT MANAGER: 907-269-8658

COMMUNICATIONS: CTAF 122.7

RADIO AIDS TO NAVIGATION: NOTAM FILE ANC.

ANCHORAGE (H) VOR/DME 113.15 TED Chan 78(Y)

N61°10.07' W149°57.61' 241° 44.3 NM to fld. 93/18E.

VOR unusable:

041°-091° byd 25 NM blo 15,000'

091°-096° byd 20 NM blo 15,000'

096°-121° byd 25 NM blo 12,500'

121°-146° byd 25 NM blo 9,000'

DME unusable:

041°-091° byd 25 NM blo 15,000'

091°-096° byd 20 NM blo 15,000'

096°-121° byd 25 NM blo 12,500'

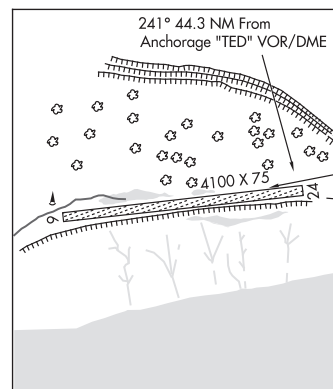
121°-146° byd 25 NM blo 9,000'

196°-206° byd 25 NM blo 3,500'

206°-211° byd 25 NM blo 4,000'

211°-221° byd 25 NM blo 3,500'

COMM/NAV/WEATHER REMARKS: For a toll free call to Kenai FSS dial 1-866-864-1737.



ANCHORAGE
H-18, 2K, L-1A, 3D, 4F

TYONEK (TYE) PVT 1 NE UTC-9(-8DT) N61°04.60' W151°08.28'

110 NOTAM FILE

RWY 18-36: 3000X90 (GRVL) LIRL

RWY 18: Trees.

RWY 36: Trees. Rgt tfc.

AIRPORT REMARKS: Attended continuously. Vehicle tfc on and invof rwy. Severe turbulence when wind from east. Village charges ldg and tie-down fees. For LIRL call 907-583-2201.

AIRPORT MANAGER: 907-583-2201

COMMUNICATIONS: CTAF 122.7 UNICOM 122.8

COMM/NAV/WEATHER REMARKS: For a local call to Kenai FSS dial 1-866-864-1737.

ANCHORAGE
L-1A, 3D, 4F