

**UNALAKLEET** (UNK)(PAUN) 1 N UTC-9(-8DT) N63°53.31' W160°47.95'

27 B NOTAM FILE UNK

**RWY 15-33:** H5900X150 (ASPH-GRVD) HIRL

**RWY 15:** VASI(V4L)—GA 3.0° TCH 39'. Road. Rgt tfc.

**RWY 33:** REIL. VASI(V4L)—GA 3.0° TCH 48'. Bldg.

**RWY 09-27:** H1900X75 (ASPH-GRVD) PCN 59 F/B/X/T MIRL

**RWY 27:** Bridge.

**SERVICE:** FUEL 100LL, JET A LGT ACTVT REIL Rwy 33; HIRL Rwy 15-33; MIRL Rwy 09-27—CTAF. VASI Rwy 15 and Rwy 33 on consly.

**AIRPORT REMARKS:** Attended Mon-Fri 1700-0100Z $\ddagger$ . 299 ft twr 2.4 NM E. Snow removal and de-icing NA 0100-1700Z $\ddagger$ . Rwy cond unmnt; rcmd visual insp prior to lndg. Airframe rprs emerg only. Pwr plant rprs emerg only. Tsnt prkg near DOT maint bldg and Rwy 27 thr. Rwy 15 100 ft unlgt twr 0.4 NM N of thr.

**AIRPORT MANAGER:** 907-625-1025

**WEATHER DATA SOURCES:** AWOS-3P 132.25 (907) 624-3051. (WX CAM)

**COMMUNICATIONS:** CTAF 123.0

UNALAKLEET RCO 122.3(NOME RADIO)

ANCHORAGE CENTER APP/DEP CON 135.7 335.5

**AIRSPACE:** CLASS E svc 1500-0400Z $\ddagger$ ; other times CLASS G.

**RADIO AIDS TO NAVIGATION:** NOTAM FILE UNK.

(H) (H) VOR/DME 116.9 UNK Chan 116 N63°53.52' W160°41.06' 251° 3.1 NM to fld. 436/15E.

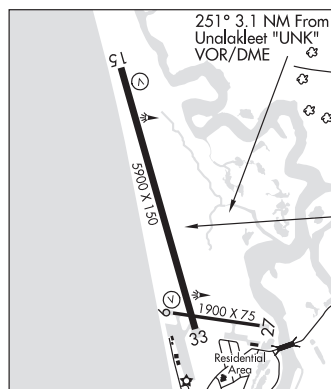
LOC/DME 111.3 I-UNK Chan 50 Rwy 15.

**COMM/NAV/WEATHER REMARKS:** For a toll free call to Nome FSS dial 1-800-478-8400. For a toll free call to Fairbanks FSS dial 1-866-248-6516.

MC GRATH

H-1A, H-21, L-3C

IAP



**UNALASKA** (DUT)(PADU) 1 N UTC-9(-8DT) N53°53.94' W166°32.70'

23 B TPA—2101(2078) LRA ARFF Index—See Remarks NOTAM FILE DUT

**RWY 13-31:** H4500X100 (ASPH-GRVD) S-60, 2D-210

PCR 860 F/B/X/T MIRL

**RWY 13:** REIL. VASI(V4L)—GA 3.0° TCH 38'. Thld dsplcd 300'. Boat.

**RWY 31:** REIL. VASI(V4R)—GA 3.0° TCH 32'. Thld dsplcd 300'. Boat.

Rgt tfc.

**RUNWAY DECLARED DISTANCE INFORMATION**

**RWY 13:** TORA-4337 TODA-4500 ASDA-4200 LDA-3900

**RWY 31:** TORA-4500 TODA-4500 ASDA-4200 LDA-3900

**SERVICE:** FUEL JET A LGT For REIL Rwy 13 and 31; MIRL Rwy 13-31; Rwy 31 thr veh Xg tfc lgt—CTAF 7 clicks on & 3 clicks for Xg tfc lgt and REIL off. VASI Rwy 13 and Rwy 31 opr consly. VASI Rwy 31 usable +1.4 mi due to Mt, skewed 5 deg S of rwy hdg.

**AIRPORT REMARKS:** Attended 1700-0130Z $\ddagger$ . Class I, ARFF Index A.

CLOSED to ACR ops more than 30 pax seats exc PPR in writing; amgr P.O. Box 920525, Dutch Harbor, AK 99692. ARFF equip staffed durg lrg ACR ops PDS. Hvy bird concentrations on and in/ov arpt. PAEW on Rwy 13-31. Locked wheel turns NA. Arpt maint duty hrs

1700-0130Z $\ddagger$  Mon thru Sun. Haz rprtg durg atrndc hr and acft ovr 30 pax seat. Snow removal and deicing of rwy, twy and ramps durg duty hr. Tfc pat around Mt. Tsnt prkg Ramp B. CAUTION: Vessel tfc w/ 1500' Rwy 13. Vessel dock w/ 1300 ft Rwy 31. Rwy 31 jet blast area clsd to tax exc when road vehicle and pedestrian tfc ctdld by opr rep, clkws turn reqd. SPB gate ops—CTAF, 7 clicks open, 3 clicks close. See Section "C" notice for gate proc.

**AIRPORT MANAGER:** 907-581-1786

**WEATHER DATA SOURCES:** AWOS-3P 125.8 (907) 581-2803. (WX CAM)

**COMMUNICATIONS:** CTAF 122.6

RCO 122.6 (COLD BAY RADIO)

ANCHORAGE CENTER APP/DEP CON 121.4

**RADIO AIDS TO NAVIGATION:** NOTAM FILE DUT.

DUTCH HARBOR NDB/DME (HW) 283 DUT Chan 86 N53°54.31' W166°32.87' at fld. 272/9E.

DME portion unusable:

005°-080°

081°-330° byd 13 NM

331°-004° byd 15 NM

**COMM/NAV/WEATHER REMARKS:** Cold Bay FSS 1700-0300Z $\ddagger$ , aft hrs Kenai FSS. For a toll free call to Cold Bay FSS dial

1-800-478-7250. For a toll free call to Kenai FSS dial 1-866-864-1737. Wx info 1645-0345—Dutch Wx 129.5 OR 907-581-1256.



DUTCH HARBOR

H-21, L-2J

IAP