

IRON MOUNTAIN KINGSFORD

FORD (IMT)(KIMT) 3 W UTC-6(-5DT) N45°49.10' W88°06.87'

GREEN BAY
H-2K, L-31A
IAP, AD

1182 B TPA—See Remarks ARFF Index—See Remarks NOTAM FILE IMT

RWY 01-19: H6502X150 (ASPH-PFC) S-100, D-100, 2S-127,

2D-190 PCR 159 F/B/X/T HIRL 0.8% up N

RWY 01: MALSR.

RWY 19: REIL. PAPI(P4L)—GA 3.0° TCH 42'.

RWY 13-31: H3810X75 (ASPH-PFC) S-30, D-50, 2D-80

PCR 99 F/B/X/T MIRL No Part 121/Part 380 Ops

RWY 31: REIL. PAPI(P4L)—GA 4.0° TCH 40'.

RUNWAY DECLARED DISTANCE INFORMATION

RWY 01: TORA-6502 TODA-6502 ASDA-6502 LDA-6502

RWY 13: TORA-3810 TODA-3810 ASDA-3810 LDA-3810

RWY 19: TORA-6502 TODA-6502 ASDA-6376 LDA-6376

RWY 31: TORA-3810 TODA-3810 ASDA-3810 LDA-3810

SERVICE: S4 **FUEL** 100LL, JET A **OX** 4 **LGT** ACTVT MALSR Rwy 01;

REIL Rwy 19 & 31; PAPI Rwy 19 & 31; HIRL Rwy 01-19; MIRL Rwy

13-31—CTAF.

AIRPORT REMARKS: Attended 1200-0300Z†. Deer, coyotes, & birds on &

invol arpt. Fld conds unmon Oct 15 thru Apr 1 btn 0300-1200Z†.

Class I, ARFF Index A. ACR ops gtr than 9 pax seats NA if not wi 15

mins of skedd arr/dep time exc by prior cdm with amgr & cfmn ARFF

is avbl prior to tkof/dlg. 48 hrs PPR for unsked ACR ops gtr than 30

pax seats—call amgr cell. ARFF crews mnt CTAF/UNICOM drg all ACR ops.

Snow removal crews mnt CTAF/UNICOM drg all ACR ops to prvd sfc condrpts.

TPA—1982(800) Jet/Turbo-Jet/Prop over 12,500 lbs 2682(1500). Ldg fee.

AIRPORT MANAGER: 906-774-4870

WEATHER DATA SOURCES: ASOS 119.025 (906) 774-1999.

COMMUNICATIONS: CTAF/UNICOM 122.8

Ⓜ **MINNEAPOLIS CENTER APP/DEP CON** 121.25

AIRSPACE: CLASS E svc 1200-0400Z† Mon-Fri, 1500-0100Z† Sat, 1500-0400Z† Sun; other times CLASS G.

RADIO AIDS TO NAVIGATION: NOTAM FILE IMT.

IRON MOUNTAIN (L) DME 115.35 IMT Chan 100(Y) N45°48.96' W88°06.73' at fld. 1128.

DME unusable:

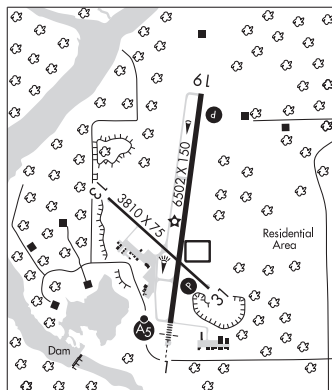
025°-070°

070°-145° blo 9,000'

220°-355° blo 10,000'

ILS 111.5 I-IMT Rwy 01. Class IC. Unmonitored. Autopilot cpd apch NA blw 2,110' MSL.

COMM/NAV/WEATHER REMARKS: UNICOM ireg mntd.



IRON MOUNTAIN N45°48.96' W88°06.73' NOTAM FILE IMT.

GREEN BAY
L-31A

(L) DME 115.35 IMT Chan 100(Y) 1128.

DME unusable:

025°-070°

070°-145° blo 9,000'

220°-355° blo 10,000'

IRON RIVER

STAMBAUGH (Y73) 1 SSE UTC-6(-5DT) N46°04.73' W88°38.13'

GREEN BAY

1618 NOTAM FILE GRB

RWY 17-35: H2000X40 (ASPH) LIRL(NSTD) 0.4% up S

RWY 17: REIL. Trees.

RWY 35: REIL.

SERVICE: **FUEL** 100LL **LGT** ACTVT NSTD REIL Rwy 17 and 35, NSTD LIRL Rwy 17-35—121.9. Rwy 17-35 NSTD LIRL

due to lctn 25 ft from rwy edge. Thr lgts lctd outboard fm rwy edge. Rwy 17 and 35 NSTD REIL omnidirectional.

AIRPORT REMARKS: Unattended. Deer, birds and wildlife on and invol arpt. 100' drop-off aft each rwy end. Rwy 17-35 dnslp

fm S to N.

AIRPORT MANAGER: 906-265-6144

COMMUNICATIONS: CTAF 122.9

CLEARANCE DELIVERY PHONE: For CD ctc Minneapolis ARTCC at 651-463-5588.