

CHILLICOTHE

ROSS CO (RZT)(KRZT) 6 NW UTC-5(-4DT) N39°26.43' W83°01.38'

CINCINNATI
H-10G, L-29A
IAP

725 B NOTAM FILE RZT

RWY 05-23: H5405X100 (ASPH) S-75, D-100 MIRL 0.4% up SW

RWY 05: REIL. PAPI(P4L)—GA 3.0° TCH 44'. Trees.

RWY 23: REIL. PAPI(P4L)—GA 3.0° TCH 45'. Trees.

SERVICE: S2 **FUEL** 100LL, JET A **LGT** ACTVT REIL Rwy 05 and 23; PAPI Rwy 05 and Rwy 23; MIRL Rwy 05-23—123.0.

AIRPORT REMARKS: Attended 1300-2200Z†. Unattended New Years, July 4th, Thanksgiving, and Christmas. Transient hangar storage: prior coord required.

AIRPORT MANAGER: 740-773-4788

WEATHER DATA SOURCES: AWOS-3 119.225 (740) 779-1364. SAWRS AVBL 1300-2300Z† & UPON REQUEST CALL 740-773-4788.

COMMUNICATIONS: CTAF/UNICOM 122.8

Ⓡ **COLUMBUS APP/DEP CON** 134.0

CLEARANCE DELIVERY PHONE: For CD ctc Columbus Apch at 614-338-8537.

RADIO AIDS TO NAVIGATION: NOTAM FILE DAY.

APPLETON (VH) (H) VORTAC 116.7 APE Chan 114 N40°09.06' W82°35.30' 211° 47.1 NM to fld. 1354/6W.

VOR unusable:

025°-030°

TACAN AZIMUTH unusable:

075°-095°

110°-115°

DME unusable:

075°-080°

YELLOW BUD (T) VORW 112.5 XUB N39°31.61' W82°58.68' 207° 5.6 NM to fld. 689/5W.

CINCINNATI MUNI/LUNKEN FLD (LUK)(KLUK) 3 SE UTC-5(-4DT) N39°06.18' W84°25.06'

CINCINNATI
H-10G, L-27E
IAP, AD

482 B LRA Class IV, ARFF Index A NOTAM FILE LUK

RWY 03-21: H6101X150 (ASPH-GRVD) S-60, D-70, 2D-140

PCR 377 R/C/X/T HIRL

RWY 03: REIL. PAPI(P4R)—GA 3.0° TCH 44'. RVR-R Tree.

RWY 21: MALSR. PAPI(P4L)—GA 3.0° TCH 39'. RVR-T Tree.

RWY 07-25: H5127X100 (ASPH-GRVD) S-11, D-20, 2D-55

PCN 38 R/C/X/T MIRL No Part 121/Part 380 Ops

RWY 07: Thld displcd 439'. Bldg.

RWY 25: VASI(V4L)—GA 3.0° TCH 40'. Tree.

RUNWAY DECLARED DISTANCE INFORMATION

RWY 03: TORA-6101 TODA-6101 ASDA-6101 LDA-6101

RWY 21: TORA-6101 TODA-6101 ASDA-6101 LDA-6101

SERVICE: S4 **FUEL** 100LL, JET A+ **OX** 1 **LGT** When ATCT clsd ACTVT or incr instst MALSR Rwy 21; HIRL Rwy 03-21—CTAF. HIRL Rwy 03-21 preset on med instst. Rwy 07-25 PCL unavbl. Rwy 03 PAPI unusbl byd 7 degs left of cntrln. Rotating bcn lctd 1.7 NM E of arpt.

NOISE: Noise abatement procs in efct call amgr. Acft maint runups rstrd btn 0200-1200Z†.

AIRPORT REMARKS: Attended continuously. Deer and birds on and invof arpt. Fuel A+ C513-871-2020. Clsd to scheduled ACR ops greater than 9 pax seats. 48 hr PPR for unsched ACR ops with gtr than 30 passenger seats call amgr. AER Rwy 25 and Rwy 21 are closely lctd; vfy cor rwy with compass hdg bfr dep. Arpt sfc cond unmon dly 0400-1200Z†. Twy D, E, G, & H clsd to unsked ACR ops gtr than 30 pax seats. Twy H not vsb fm ATCT, ctc ground control. When ATCT clsd, use CTAF. Ldg fee. Flight Notification Service (ADCUS) available.

AIRPORT MANAGER: 513-352-6340

WEATHER DATA SOURCES: ASOS (513) 321-6291

COMMUNICATIONS: CTAF 118.7 ATIS 123.6 UNICOM 122.95

Ⓡ **APP/DEP CON** 121.0

LUNKEN TOWER 118.7 (1200-0400Z†) **GND CON/CLNC DEL** 121.9 **CLNC DEL** 124.9 (when twr closed)

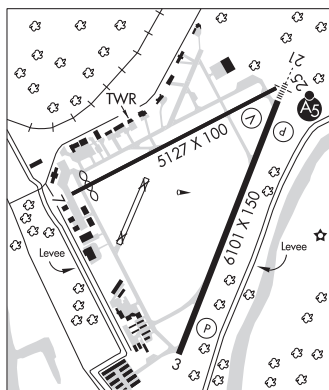
AIRSPACE: CLASS D svc 1200-0400Z†; other times CLASS E.

VOR TEST FACILITY (VOT) 108.4

RADIO AIDS TO NAVIGATION: NOTAM FILE DAY.

ILS/DME 110.9 I-LUK Chan 46 Rwy 21. Class IA. Unmonitored when ATCT clsd. DME unusable byd 25° left of course.

COMM/NAV/WEATHER REMARKS: Emerg frequency 121.5 not avbl at twr. Cust in tempo fac; cust fac reqs must be smtd to arpt first by calling 513-709-2761 or email #DOTE-AVIATION@CINCINNATI.OH.GOV.



CINCINNATI WEST (See HARRISON on page 289)