

HOLLISTER FLD (2B6) 5 E UTC-5(-4DT) N39°26.25' W83°42.50'

CINCINNATI

1090 TPA—See Remarks NOTAM FILE DAY

RWY 05-23: 3203X80 (TURF)

RWY 05: Thld dsplcd 92'.

RWY 23: Thld dsplcd 565'. Road.

RWY 13-31: 2670X80 (TURF)

RWY 13: Thld dsplcd 250'. Fence.

RWY 31: Thld dsplcd 732'. Fence.

SERVICE: FUEL UL94**AIRPORT REMARKS:** Attended dalgt hrs. Pheasants released for hunting on north side of Rwy 05-23 Sep-Apr. Model acct rdo ctl area south of Rwy 05-23. Call for rwy conds prior to ldg. Rwy 13-31 clsd indefly. Rwy ends 05 and 23 not vsb at TPA. Rwy ends 05 and 23: rwy and dthr mkd with white tires at 600 ft intvls. Tie transient storage: ropes not prvd.**AIRPORT MANAGER:** 937-603-2636**COMMUNICATIONS:** CTAF 122.9**CLEARANCE DELIVERY PHONE:** For CD ctc Columbus Apch at 614-338-8537.**WILMINGTON AIR PARK** (ILN)(KILN) 2 SE UTC-5(-4DT) N39°25.68' W83°47.53'

CINCINNATI

1077 B ARFF Index—See Remarks NOTAM FILE ILN

RWY 04L-22R: H10701X150 (CONC-GRVD) S-100, D-200, 2S-175,

2D-390, 2D/2D2-750 PCR 920 R/C/W/T HIRL CL No Part

121/Part 380 Ops

RWY 04L: MALSR. PAPI(P4L)—GA 3.0° TCH 62'. RVR-TMR

RWY 22R: ALSF2. TDZL. PAPI(P4L)—GA 3.0° TCH 71'. RVR-TMR

0.4% down.

RWY 04R-22L: H9000X150 (CONC-GRVD) S-100, D-200, 2S-175,

2D-390, 2D/2D2-750 PCR 900 R/D/W/T HIRL CL No Part

121/Part 380 Ops

RWY 04R: PAPI(P4L)—GA 3.0° TCH 71'. RVR-TMR 0.3% up.

RWY 22L: ALSF2. TDZL. PAPI(P4L)—GA 3.0° TCH 71'. RVR-TMR

0.4% down.

RUNWAY DECLARED DISTANCE INFORMATION

RWY 04L:TORA-10701 TODA-10701 ASDA-10701 LDA-10701

RWY 04R:TORA-9000 TODA-9000 ASDA-9000 LDA-9000

RWY 22L:TORA-9000 TODA-9000 ASDA-9000 LDA-9000

RWY 22R:TORA-10701 TODA-10701 ASDA-10701 LDA-10701

SERVICE: S4 FUEL JET A OX 1, 2 LGT PAPI Rwy 04L and 22R opr

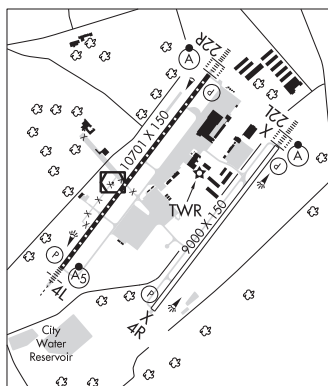
consly SS-SR. All Rwy 04R-22L lgts OTS indefly. Rwy 04L and 22R

PAPI unusbl byd 8 degs left & right of cntrln.

AIRPORT REMARKS: Attended continuously. Rwy 04R-22L CLOSED indefly. Class IV, ARFF Index A. Index B svc avbl. Rwy 04L-22R and Rwy 04R-22L, 90-day PPR for sked ACR ops gtr than 30 pax seats—call amgr 937-528-9891. Surface movement guidance and control system not avbl. Rwy 04L-22R has 1000' paved area on southwest end and 200' paved area on northeast end. Rwy 04R-22L has 200' paved area on each end. 4 hr PPR for all tsnt acct durg oprg hrs and aft hrs—call 866-931-2337. Non comm Indg fee.**AIRPORT MANAGER:** 937-366-2114**WEATHER DATA SOURCES:** ASOS (937) 383-7334**COMMUNICATIONS:** D-ATIS 124.925

Ⓜ COLUMBUS APP/DEP CON 118.85

TOWER 119.475 GND CON 121.6 CLNC DEL 128.85

CLEARANCE DELIVERY PHONE: For CD ctc Columbus Apch at 614-338-8537.**AIRSPACE:** CLASS D.

CONTINUED ON NEXT PAGE

CONTINUED FROM PRECEDING PAGE

RADIO AIDS TO NAVIGATION: NOTAM FILE ILN.

MIDWEST (T) (T) VORW/DME 112.9 MXQ Chan 76 N39°25.78' W83°48.07' at fld. 1052/4W.

VOR unusable:

051°-200°
201°-244° byd 10 NM blo 10,000'
245°-255° byd 20 NM blo 10,000'
256°-297° byd 18 NM blo 10,000'
298°-359°
300°-050° wi 3 NM
360°-022° blo 6,000'
360°-022° byd 18 NM blo 10,000'

DME unusable:

003°-024°
282°-302° byd 18 NM blo 4,000'
303°-309°
310°-320° byd 18 NM blo 6,000'
335°-340° byd 18 NM blo 6,000'

CUBLA NDB (LOMW) 299 HW N39°21.21' W83°52.55' 048° 5.9 NM to fld. 996/7W.

AIRBO NDB (MHW/LOM) 407 IL N39°29.58' W83°44.29' 220° 4.6 NM to fld. 1050/7W.

ILS 110.7 I-HWM Rwy 04L. Class IE. LOM CUBLA NDB.

ILS 110.7 I-ILN Rwy 22R. Class IIIE. LOM AIRBO NDB.

COMM/NAV/WEATHER REMARKS: Emergency frequency 121.5 not avbl at twr.

WOOD CO RGNL (See BOWLING GREEN on page 263)

WOODSFIELD

MONROE CO (4G5) 1 N UTC-5(-4DT) N39°46.74' W81°06.17'

1197 B NOTAM FILE CLE

RWY 07-25: H3805X75 (ASPH) S-18 MIRL

RWY 07: Thld dsplcd 174'.

RWY 25: REIL. PAPI(P2L)—GA 3.0° TCH 40'. Trees.

SERVICE: FUEL 100LL, JET A+ LGT ACTVT REIL Rwy 25; MIRL Rwy 07-25—CTAF, PAPI Rwy 25 opr consly.

AIRPORT REMARKS: Attended irregularly. Ocnl deer, birds, & otr wildlife on & invof arpt. Fuel full ser only call amgr cell. Rwy end 07: mkg faded.

Rwy end 25: mkg faded.

AIRPORT MANAGER: 740-472-1882

COMMUNICATIONS: CTAF/UNICOM 122.8

® CLEVELAND CENTER APP/DEP CON 126.95

CLEARANCE DELIVERY PHONE: For CD ctc Cleveland ARTCC at 440-774-0226.

RADIO AIDS TO NAVIGATION: NOTAM FILE CLE.

BELLAIRE (H) (H) VORW/DME 117.1 AIR Chan 118 N40°01.02' W80°49.03' 230° 19.4 NM to fld. 1307/7W.

CINCINNATI

L-29B

IAP

