

GREEN BAY/AUSTIN STRAUBEL INTL (GRB)(KGRB) 7 SW UTC-6(-5DT) N44°29.08' W88°07.78' **GREEN BAY**
 695 B LRA Class I, ARFF Index C NOTAM FILE GRB MON Airport H-2K, L-31A
RWY 18-36: H8700X150 (CONC-GRVD) S-120, D-170, 2S-175, IAP, AD
 2D-290 PCR 520 R/B/W/T HIRL

RWY 18: REIL. PAPI(P4R)—GA 3.0° TCH 54'. RVR-R Thld dsplcd 499'.
 Road. Rgt tfc.

RWY 36: MALSR. PAPI(P4L)—GA 3.0° TCH 50'. RVR-T
RWY 06-24: H7700X150 (CONC-GRVD) S-120, D-170, 2S-175,
 2D-290 PCR 520 R/B/W/T HIRL

RWY 06: MALSR. PAPI(P4L)—GA 3.0° TCH 40'. RVR-T
RWY 24: PAPI(P4L)—GA 3.0° TCH 50'. RVR-R

LAND AND HOLD—SHORT OPERATIONS

LDG RWY	HOLD—SHORT POINT	AVBL LDG DIST
RWY 18	06-24	2692
RWY 24	18-36	6050
RWY 36	06-24	4932

RUNWAY DECLARED DISTANCE INFORMATION

RWY 06:	TORA-7699	TODA-7699	ASDA-7699	LDA-7699
RWY 18:	TORA-8700	TODA-8700	ASDA-8700	LDA-8201
RWY 24:	TORA-7699	TODA-7699	ASDA-7699	LDA-7699
RWY 36:	TORA-8201	TODA-8201	ASDA-8201	LDA-8201

SERVICE: S4 FUEL 100LL, JET A OX 1, 3 LGT ACTVT MALSR Rwy 06

and 36; REIL Rwy 18; HIRL Rwy 06-24 and 18-36—CTAF. PAPI Rwy 06, 18, 24 and 36 opr consly. When ATCT clsd preferred rwy preset on low or med intst; incr instst—CTAF.

NOISE: Avoid noise sensitive areas N & E of arpt 0600-1200Z†.

AIRPORT REMARKS: Attended 1100-0400Z†. Birds on & invof arpt. Twy D wbnnd no turn onto Twy J. Twy J southwestbound no turn onto northbound Twy M. Twy M southbound no turn onto Twy J. Twy J southwestbound no turn onto eastbound Twy D. Twy C not avbl for ACR with more than 30 pax seats. Twy D btn Twy H and Rwy 24 apch end clsd to wingspan grt than 118 ft. Flight Notification Service (ADCUS) available.

AIRPORT MANAGER: 920-498-4800

WEATHER DATA SOURCES: ASOS (920) 204-7824 LLWAS.

COMMUNICATIONS: CTAF 118.7 ATIS 124.1

GREEN BAY RCO 122.2 (GREEN BAY RADIO)

Ⓡ **GREEN BAY APP CON 119.4** (1130-0530Z†)

Ⓡ **GREEN BAY DEP CON 126.55** (1130-0530Z†)

Ⓡ **MINNEAPOLIS CENTER APP/DEP CON 133.175**(0530-1130Z†)

GREEN BAY TOWER 118.7 (1130-0530Z†) **GND CON 121.9** **CLNC DEL 121.75**

CLEARANCE DELIVERY PHONE: When atc clsd for CD if una to ctc on FSS freq, ctc Minneapolis ARTCC at 651-463-5588.

AIRSPACE: CLASS C svc ctc APP CON svc 1130-0530Z†; other times CLASS E.

RADIO AIDS TO NAVIGATION: NOTAM FILE GRB.

(VH) (H) **VORTACW 115.5** GRB Chan 102 N44°33.31' W88°11.69' 146° 5.1 NM to fld. 767/1E.

VOR unusable:

000°-025° byd 40 NM

026°-036° byd 40 NM blo 2,600'

026°-036° byd 49 NM

040°-065° byd 59 NM

221°-233° byd 40 NM

255°-265° byd 40 NM

270°-300° blo 7,000'

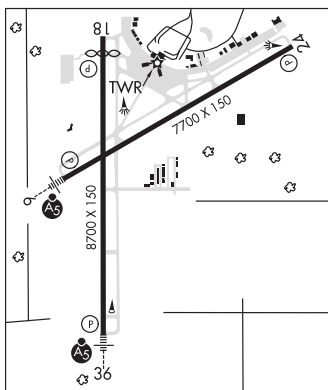
DEPRE NDB (MHW/LOM) 332 SG N44°23.91' W88°07.97' 003° 5.2 NM to fld. 638/2W.

FAMIS NDB (LOMW) 356 GR N44°26.43' W88°14.37' 063° 5.4 NM to fld. 711/2W.

ILS/DME 109.5 I-GRB Chan 32 Rwy 06. Class IE. LOM FAMIS NDB. Unmonitored when twr clsd. Localizer backcourse DME unusable byd 15° right of course. Localizer backcourse unusable 30° right of course.

ILS 109.9 I-SGZ Rwy 36. Class IE. LOM DEPRE NDB. Unmonitored when twr clsd.

ASR (1130-1730Z†)



GUTZMER'S TWIN OAKS (See WHITEWATER on page 399)