

**HARTFORD MUNI** (HXF)(KHXF) 2 NW UTC-6(-5DT) N43°21.00' W88°23.41'

CHICAGO  
L-28H  
IAP

1070 B TPA—See Remarks NOTAM FILE GRB  
RWY 09-27: H3401X75 (ASPH) S-8 MIRL 0.6% up E

RWY 09: REIL. PAPI(P4L)—GA 3.0° TCH 40'.

RWY 27: REIL. PAPI(P4L)—GA 3.0° TCH 40'.

RWY 18-36: 2231X196 (TURF) 1.5% up N

**SERVICE:** FUEL 100LL, JET A+, MOGAS LGT ACTVT REIL Rwy 09 and 27—CTAF. MIRL Rwy 09-27 preset to low SS-SR, to incr instst and ACTVT—CTAF.

**AIRPORT REMARKS:** Unattended. Glider and ultralight activity on arpt. 24 hr fuel avbl with credit card. Rgt tfc pattern ultralight and glider acft. Rwy 18, slight downhill slope. Rwy 36 +78' ft water twr 3885' from apch end. TPA—1570 (500) ultralights. Rwy 18-36 marked with orange and white wooden A-frames.

**AIRPORT MANAGER:** 262-673-8225

**COMMUNICATIONS:** CTAF/UNICOM 123.0

Ⓡ MILWAUKEE APP/DEP CON 125.35

**CLEARANCE DELIVERY PHONE:** For CD etc Chicago ARTCC at 630-906-8921.

**RADIO AIDS TO NAVIGATION:** NOTAM FILE MKE.

**BADGER (H) (H) VORW/DME** 116.4 BAE Chan 111 N43°07.01' W88°17.06' 340° 14.7 NM to fld. 1070/2E.

**WEST BEND (T) VORW** 109.8 BJB N43°25.32' W88°07.51' 251° 12.4 NM to fld. 871/1W. NOTAM FILE ETB.

**HAYWARD**

**SAWYER CO** (HYR)(KHYR) 2 NE UTC-6(-5DT) N46°01.52' W91°26.66'

GREEN BAY  
H-21, L-141  
IAP

1216 B NOTAM FILE HYR

RWY 03-21: H5003X100 (ASPH-GRVD) S-74, D-106, 2S-82,

2D-173 PCR 290 F/C/W/T HIRL

RWY 03: REIL. PAPI(P4L)—GA 3.0° TCH 34'. Fence.

RWY 21: MALSR. PAPI(P4R)—GA 3.0° TCH 45'. Trees.

RWY 16-34: 1088X120 (TURF)

RWY 16: Trees.

RWY 34: Trees.

**SERVICE:** FUEL 100LL, JET A+ LGT ACTVT MALSR Rwy 21; REIL Rwy 03; PAPI Rwy 03 and 21; HIRL Rwy 03-21—CTAF. SS-SR HIRL Rwy 03-21 preset to low; to incr instst—CTAF.

**AIRPORT REMARKS:** Attended May-Oct 1400-0000Z‡, Nov-Apr 1400-2300Z‡. Rwy 16-34 CLOSED Dec 1 thru Apr 15. Birds on & invof arpt. Arpt cond unmon 2300-1400Z‡. Rwy end 16 and Rwy end 34 mkd with yellow cones.

**AIRPORT MANAGER:** 715-634-4624

**WEATHER DATA SOURCES:** ASOS 118.4 (715) 634-6138.

**COMMUNICATIONS:** CTAF/UNICOM 122.8

Ⓡ MINNEAPOLIS CENTER APP/DEP CON 126.45

**CLEARANCE DELIVERY PHONE:** For CD if una via freq etc Minneapolis ARTCC at 651-463-5588.

**RADIO AIDS TO NAVIGATION:** NOTAM FILE HYR.

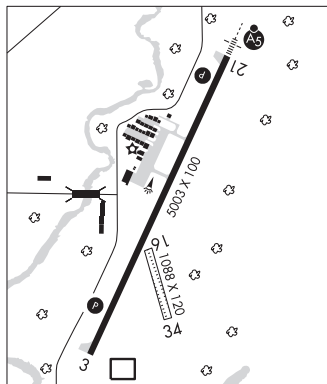
**HAYWARD (L) DME** 113.4 HYR Chan 81 N46°01.14' W91°26.78' at fld. 1208.

DME unusable:

Blw 10,000'

Byd 20 NM

ILS/DME 108.5 I-HTY Chan 22 Rwy 21. Class IB. Unmonitored.



**HORLICK** N42°45.73' W87°48.88' NOTAM FILE RAC.

CHICAGO  
L-28H, A

(T) DME 114.05 HRK Chan 87(Y) at Batten Intl. 663.

DME unusable:

205°-240° byd 20 NM

241°-204°