

JOHN F KENNEDY MEML (See ASHLAND on page 334)

JUNEAU

DODGE CO (UNU)(KUNU) 2 N UTC-6(-5DT) N43°25.59' W88°42.23'

CHICAGO
H-5E, L-28H
IAP

934 B NOTAM FILE UNU

RWY 08-26: H5070X100 (ASPH) PCN 15 F/D/Y/T MIRL 0.9% up NE

RWY 08: REIL. PAPI(P4L)—GA 3.0° TCH 26'. Trees.

RWY 26: MALSF. PAPI(P4L)—GA 3.0° TCH 35'.

RWY 02-20: H4028X75 (ASPH) S-12.5 MIRL

RWY 02: REIL. PAPI(P2L)—GA 3.0° TCH 26'.

RWY 20: REIL. PAPI(P2L)—GA 3.0° TCH 25'.

SERVICE: S4 FUEL 100LL, JET A+ LGT MIRL Rwy 08-26 preset on low SS-SR; to incr intst and ACTVT MALSF Rwy 26; REIL Rwy 02, 08, & 20; PAPI Rwy 02, 08, 20, & 26; MIRL Rwy 02-20; MIRL Rwy 08-26—CTAF.

AIRPORT REMARKS: Attended 1300-0100Z±. Birds on and invof arpt. Irregular ultralight activity on and invof arpt. Mowing ops Mon-Fri with flashing lgts after dark.

AIRPORT MANAGER: 920-386-2402

WEATHER DATA SOURCES: AWOS-3 120.825 (920) 386-5682.

COMMUNICATIONS: CTAF/UNICOM 122.7

Ⓡ **MADISON APP/DEP CON** 119.15 (1200-0500Z±)

Ⓡ **CHICAGO CENTER APP/DEP CON** 133.3 (Hours Madison Apch Ctl clsd)

CLEARANCE DELIVERY PHONE: For CD ctc Madison app/dep con at 608-249-8240. When Madison Apch clsd, for CD ctc Chicago ARTCC at 630-906-8921.

RADIO AIDS TO NAVIGATION: NOTAM FILE MKE.

BADGER (H) (H) VORW/DME 116.4 BAE Chan 111 N43°07.01' W88°17.06' 313° 26.1 NM to fld. 1070/2E.

KENOSHA RGNL (ENW)(KENW) 4 W UTC-6(-5DT) N42°35.76' W87°55.64'

CHICAGO
H-5E, L-28H, A
IAP, AD

743 B NOTAM FILE ENW

RWY 07L-25R: H6600X100 (CONC-GRVD) S-108, D-135, 2S-85,

2D-209 PCR 430 R/D/W/T HIRL 0.5% up W

RWY 07L: MALS. PAPI(P4L)—GA 3.0° TCH 55'.

RWY 25R: REIL. PAPI(P4L)—GA 3.0° TCH 45'. Rgt tfc.

RWY 15-33: H4440X100 (ASPH-GRVD) S-62, D-73, 2S-86,

2D-135 HIRL

RWY 15: VASI(V4L)—GA 4.0° TCH 50'. Trees.

RWY 33: VASI(V4L)—GA 3.0° TCH 42'.

RWY 07R-25L: H3302X75 (ASPH) S-40, D-48 MIRL 0.7% up W

RWY 07R: PAPI(P4L)—GA 3.0° TCH 26'. Rgt tfc.

RWY 25L: PAPI(P4L)—GA 3.0° TCH 24'. Trees.

SERVICE: S4 FUEL 100LL, JET A+ OX 1, 2 LGT When twr clsd HIRL

Rwy 07L-25R preset on low intst; to incr intst and ACTIVATE MALS. R

Rwy 07L; REIL Rwy 25R; PAPI Rwy 07L, Rwy 07R, Rwy 25L and

Rwy 25R; HIRL Rwy 07L-25R; HIRL Rwy 15-33; MIRL Rwy

07R-25L—CTAF. VASI Rwy 15 and Rwy 33 opr consly. Rwy end 25L:

PAPI unusbl byd 7 degs right of cntrn.

AIRPORT REMARKS: Attended 1300-0300Z±. Birds on and invof arpt. Rwy

07R-25L is CLOSED to jet acct and acct weighing more than 12,500

lbs when Rwy 07L-25R is open. Acft weighing more than 122,000

lbs, empty or fully loaded, are not allowed to be based at KENW. The term "based" shall be defined as an acct that is opr

and airworthy on the arpt for a majority of the year. Helicopter dep and arr ops will be authorized by twr from movement

areas only. Non-movement area depts, arrs and practice, are prohibited.

AIRPORT MANAGER: 262-653-4161

WEATHER DATA SOURCES: ASOS (262) 652-7730

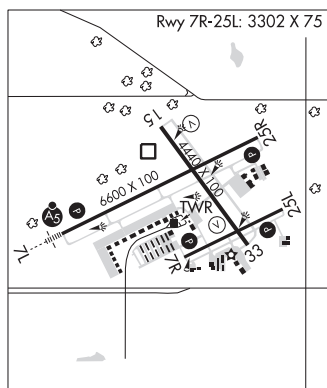
COMMUNICATIONS: CTAF 118.6 ATIS 127.175 UNICOM 122.95

Ⓡ **MILWAUKEE APP/DEP CON** 135.875

TOWER 118.6 (1300-0300Z±) **GND CON** 121.875

CLNC DEL 121.875 (118.6 when twr clsd)

AIRSPACE: CLASS D svc 1300-0300Z±; other times CLASS E.



CONTINUED ON NEXT PAGE

CONTINUED FROM PRECEDING PAGE

RADIO AIDS TO NAVIGATION: NOTAM FILE IKK.

NORTHBROOK (VH) (DH) VORV/DME 113.0 OBK Chan 77 N42°13.28' W87°57.10' 005° 22.5 NM to fld. 708/2W.

DME unusable:

215°-330° byd 35 NM blo 3,000'

VOR unusable:

265°-272° byd 40 NM

273°-283° byd 40 NM blo 18,000'

284°-288° byd 40 NM

(T) DME 109.2 ENW Chan 29 N42°35.94' W87°55.90' at fld. 734. NOTAM FILE ENW.

ILS 109.35 I-ENW Rwy 07L. Class IB. Unmonitored when ATCT clsd.

KINGS LAND O' LAKES (See LAND O' LAKES on page 357)

KOOKY N44°12.96' W88°23.94' NOTAM FILE ATW.

NDB (LOWW) 407 AQ 298° 5.8 NM to Appleton Intl. 752/2W. NDB unmonitored.

GREEN BAY

L-28H

L O SIMENSTAD MUNI (See OSCEOLA on page 373)

LA CROSSE RGNL (LSE)(KLSE) 4 NW UTC-6(-5DT) N43°52.76' W91°15.40'

655 B Class I, ARFF Index B NOTAM FILE LSE

RWY 18-36: H8742X150 (CONC-GRVD) S-120, D-200, 2S-175,

2D-340, 2D/2D2-810 PCR 630 R/B/W/T HIRL

RWY 18: MALSR. PAPI(P4L)—GA 3.0° TCH 55'. Tree.

RWY 36: REIL. VASI(V4L)—GA 3.0° TCH 28'. Thld displd 1131'. Tree.

RWY 13-31: H6050X150 (ASPH-GRVD) S-120, D-200, 2S-175,

2D-340 PCR 630 F/A/X/T MIRL

RWY 13: REIL. VASI(V4L)—GA 3.0° TCH 33'. Trees.

RWY 31: REIL. VASI(V4L)—GA 3.85° TCH 44'. Thld displd 739'. Trees.

RWY 04-22: H5199X150 (ASPH) S-90, D-150, 2S-139, 2D-280

PCR 330 F/A/X/T HIRL No Part 121/Part 380 Ops

RWY 04: PAPI(P4L)—GA 4.0° TCH 29'. Pole.

RWY 22: PAPI(P4L)—GA 4.0° TCH 28'. Trees.

RUNWAY DECLARED DISTANCE INFORMATION

RWY 04: TORA-5199 TODA-5199 ASDA-5199 LDA-5199

RWY 13: TORA-5310 TODA-5310 ASDA-5310 LDA-5310

RWY 18: TORA-8105 TODA-8742 ASDA-8536 LDA-8536

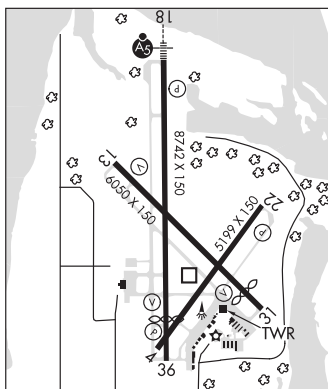
RWY 22: TORA-5199 TODA-5199 ASDA-5199 LDA-5199

RWY 31: TORA-6050 TODA-6050 ASDA-6050 LDA-5310

RWY 36: TORA-8742 TODA-8742 ASDA-8564 LDA-7433

SERVICE: S4 FUEL 100LL, JET A LGT When ATCT clsd MIRL Rwy 13-31 preset low intst; to incr intst & ACTVT MALSR Rwy 18; REIL Rwy 13, 31, 36; MIRL Rwy 13-31; HIRL Rwy 18-36, Rwy 04-22—CTAF. PAPI Rwy 04, 18, & 22; VASI Rwy 13, 31, & 36 opr consly. Rwy 31 VASI unusbl byd 9 degs right of cntrln.

AIRPORT REMARKS: Attended 1200-0300Z±. For attendant other hrs call 608-783-8359. Deer, waterfowl and other birds on and invof arpt. Heavy concentrations of waterfowl spring and fall. Cold temperature airport. Altitude correction required at or below -21C. Twr 1390' AGL 6 NM southwest. Numerous twrs up to 836' AGL 4 NM southeast. Holding position for the west side of Rwy 36 apch end is set back on Twy C, see HS-1 on arpt diagram. Rwy incursion risk. Pilots are reminded to review arpt hot spot info before taxiing for dep and before landing. See TPP arpt diagram and chart supplement sxn on hot spots for additional info. Wrong rwy arrival risk, Rwy 4 and Rwy 36 apch ends are closely aligned. See TPP arpt diagram. Twy A btn Rwy 13-31 and Twy A4; Twy A4 not avbl for skedd ACR opns with more than 9 pax seats or unskd ACR opns grtr than 30 pax seats. 48 hr PPR for unskd ACR opns grtr than 30 pax seats, call AMGR.



CHICAGO

H-2J, L-28G

IAP, AD

CONTINUED ON NEXT PAGE