

PEKIN MUNI (C15) 4 S UTC-6(-5DT) N40°29.29' W89°40.55'

530 B NOTAM FILE IKK

RWY 09-27: H5000X75 (ASPH) S-25 MIRL

RWY 09: REIL. PAPI(P2L)—GA 3.0° TCH 20'.

RWY 27: REIL. PAPI(P4L)—GA 3.0° TCH 27'.

SERVICE: S4 **FUEL** 100LL, JET A **LGT** ACTIVATE REIL Rwy 09 and Rwy 27; PAPI Rwy 09 and Rwy 27; MIRL Rwy 09-27 preset on low, to incr ints and ACTIVATE—CTAF.

AIRPORT REMARKS: Attended Mon-Fri 1400-2300Z. Wildlife invof arpt.

Administration bldg can be accessed by cipher lock which has applicable instructions.

AIRPORT MANAGER: 309-348-3692

COMMUNICATIONS: CTAF/UNICOM 122.8

Ⓡ **SAINT LOUIS APP/DEP CON** 125.8

CLEARANCE DELIVERY PHONE: For CD etc St Louis Apch at 314-890-1017.

RADIO AIDS TO NAVIGATION: NOTAM FILE PIA.

PEORIA (L) (L) VORTACW 115.2 PIA Chan 99 N40°40.80'

W89°47.57' 151° 12.7 NM to fld. 731/4E.

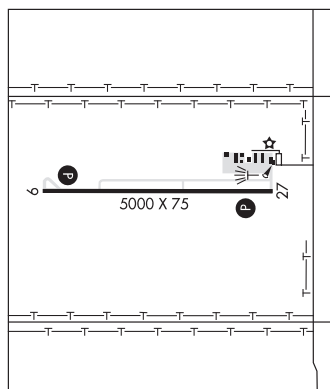
VOR portion unusable:

009°-019° byd 25 NM blo 8,000'

CHICAGO

H-5D, L-27C

IAP



PEORIA

GENERAL DOWNING – PEORIA INTL (PIA)(KPIA) P (ANG ARNG) 4 W UTC-6(-5DT) N40°39.85'

W89°41.60'

661 B LRA Class I, ARFF Index B NOTAM FILE PIA

RWY 13-31: H10104X150 (CONC-GRVD) S-100, D-175, 2S-175,

2D-310 PCR 760 F/C/X/T HIRL

RWY 13: MALSR. PAPI(P4R)—GA 3.0° TCH 57'. RVR-TR Thld dsplcd 500'. Tree.

RWY 31: MALSR. RVR-TR Tree.

RWY 04-22: H8004X150 (ASPH-GRVD) S-100, D-175, 2S-175,

2D-300 PCR 800 F/C/X/T HIRL 0.3% up NE

RWY 04: MALSR. PAPI(P4R)—GA 3.0° TCH 54'. RVR-TR Tree.

RWY 22: PAPI(P4L)—GA 3.0° TCH 45'. RVR-TR Tree.

RUNWAY DECLARED DISTANCE INFORMATION

RWY 04: TORA-8004 TODA-8004 ASDA-7826 LDA-7826

RWY 13: TORA-10104 TODA-10104 ASDA-9604 LDA-9604

RWY 22: TORA-8004 TODA-8004 ASDA-8004 LDA-8004

RWY 31: TORA-10104 TODA-10104 ASDA-10104 LDA-10104

SERVICE: S4 **FUEL** 100LL, JET A, A++ **OX** 1, 2 **LGT** Rwy 22 PAPI unusbl byd 9° rgt of cntrln. **MILITARY—** JASU (A/M32A-86) 1(MD-3A) 2(AM32-95) **FUEL** A++(Mii) (NC-100LL, A) **FLUID** PRESAIR LOX OIL O-128(MIL)

AIRPORT REMARKS: Attended continuously. Birds on and invof arpt. Portion

of Twy A-5 not visible from twr due to a building. Lgtd P-line Rwy 04 apch.

MILITARY REMARKS: ANG OPS Call TORCH OPS 20 min prior to ldg.

AIRPORT MANAGER: 309-697-8272

WEATHER DATA SOURCES: ASOS (309) 322-3740 LLWAS.

COMMUNICATIONS: ATIS 126.1 UNICOM 122.95

PEORIA RCO 122.5 (KANKAKEE RADIO)

Ⓡ **SAINT LOUIS APP/DEP CON** 125.8

TOWER 124.0 **GND CON** 121.85 **CLNC DEL** 124.675

AIRSPACE: CLASS C svc ctc **APP CON.**

RADIO AIDS TO NAVIGATION: NOTAM FILE PIA.

PEORIA (L) (L) VORTACW 115.2 PIA Chan 99 N40°40.80' W89°47.57' 098° 4.6 NM to fld. 731/4E.

VOR portion unusable:

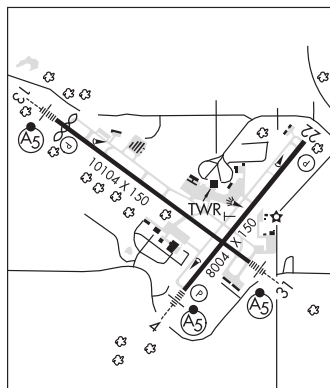
009°-019° byd 25 NM blo 8,000'

TUNGG NDB (MHW/LOM) 356 PI N40°36.34' W89°35.59' 310° 5.8 NM to fld. 602/2W.

ILS/DME 110.55 I-RNX Chan 42(Y) Rwy 04. Class IIE.

ILS 109.9 I-GZX Rwy 31. Class IA.

ILS 109.9 I-PIA Rwy 31. Class IA. LOM TUNGG NDB.



CHICAGO

H-5D, L-27C

IAP, AD