

JEFFERSON CITY MEML (JEF)(KJEF) P (ARNG) 2 NE UTC-6(-5DT) N38°35.47' W92°09.37'

KANSAS CITY

549 B NOTAM FILE JEF

H-SD, L-27B

RWY 12-30: H6000X100 (CONC-GRVD) S-85, D-104, 2D-168

IAP, AD

PCN 32 R/D/W/T HIRL

RWY 12: REIL. VASI(V4L)—GA 3.5° TCH 64'.

RWY 30: MALSR. VASI(V4L)—GA 3.0° TCH 50'.

RWY 09-27: H3401X75 (CONC) S-33.5, D-44 PCN 11 R/D/W/T MIRL

RWY 09: REIL. PAPI(P4L)—GA 3.0° TCH 23'. Hangar.

RWY 27: REIL. PAPI(P4L)—GA 3.0° TCH 29'. Trees.

SERVICE: S4 **FUEL** 100LL, JET A **OX** 3, 4 **LGT** When twr clsd
 ACTIVATE MALSR Rwy 30; REIL Rwys 09, 12, 27; HIRL Rwy 12-30; Twy A lghts—CTAF. VASI Rwy 12 and Rwy 30 opr continuously. **MILITARY—FUEL** J8 (Mil - Avbl 1230-0000Z† Mon-Fri, 24 hr PN, C573-526-9786), A+ (avbl 1230-0230Z† Mon-Fri, 1400-0000Z† Sat-Sun and hol, C573-636-5118, OT 2 hr PN C573-680-3015.) (NC-100LL, A)

AIRPORT REMARKS: Attended 1230-0230Z†. Fuel avbl from 0630-2030Z†. Light to moderate bird activity invof arpt. ARFF avbl with PPR 24 hours 573-634-6469. Entrances to east and south hangars, not visible by twr.

AIRPORT MANAGER: 573-634-6469

WEATHER DATA SOURCES: ASOS 133.625 (573) 635-9266.

COMMUNICATIONS: CTAF 125.6 UNICOM 122.95

RCO 122.4 (COLUMBIA RADIO)

® MIZZU APP/DEP CON 124.375

TOWER 125.6 (1200-0330Z†) GND CON 121.7

ARNG OPS 41.65 142.4 242.4 NG OPS 118.55

CLEARANCE DELIVERY PHONE: For CD etc Mizzou Apch at 417-868-5620/5619.

AIRSPACE: CLASS D svc 1200-0330Z†; other times CLASS E.

VOR TEST FACILITY (VOT) 112.0

RADIO AIDS TO NAVIGATION: NOTAM FILE COU.

COLUMBIA (L) (L) VORW/DME 110.2 COU Chan 39 N38°48.65' W92°13.10' 167° 13.5 NM to fld. 883/OE.

VOR unusable:

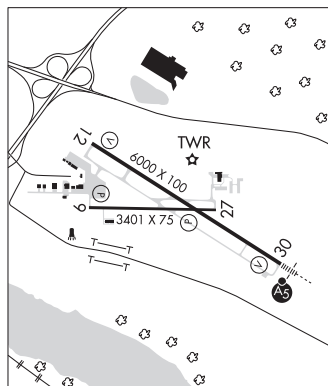
088°-101°

240°-250° byd 10NM blo 14,900'

251°-280° byd 10NM blo 11,900'

ALGOA NDB (MHW) 397 JE N38°32.88' W92°04.30' 304° 4.7 NM to fld. 585/1W. NOTAM FILE JEF.

ILS/DME 110.5 I-JEF Chan 42 Rwy 30. Class IE. LOM ALGOA NDB. ILS/DME unmonitored when ATCT closed.



JERRY SUMNERS SR AURORA MUNI (See AURORA on page 223)

JESSE VIERTEL MEML (See BOONVILLE on page 225)