

CONTINUED FROM PRECEDING PAGE

WEATHER DATA SOURCES: ASOS 120.75 (816) 329-2843. LAWRS.

COMMUNICATIONS: ATIS 120.75 816-329-2850 UNICOM 122.95

Ⓡ KANSAS CITY APP/DEP CON 118.4

TOWER 133.3 GND CON 121.9 CLNC DEL 121.9 PRE-TAXI CLNC 121.9

AIRSPACE: CLASS D.

VOR TEST FACILITY (VOT) 108.6

RADIO AIDS TO NAVIGATION: NOTAM FILE MCI.

(H) (H) VORTAC 113.25 MCI Chan 79(Y) N39°17.12' W94°44.22' 140° 11.8 NM to fld. 1017/5E.

NAPOLEON (VL) (L) VORTAC 115.15 ANX Chan 98(Y) N39°05.73' W94°07.73' 267° 21.7 NM to fld.

878/7E. NOTAM FILE COU.

TACAN AZIMUTH unusable:

220°-230° byd 35 NM blo 2,000'

VOR unusable:

129°-139°

DME unusable:

220°-230° byd 35 NM blo 2,000'

KENZY NDB (LOM) 344 MK N39°13.25' W94°33.86' 192° 6.0 NM to fld.

ILS/DME 111.75 I-GQR Chan 54(Y) Rwy 04. Glideslope unusable for cpd apchs blw 1,013' MSL.

ILS/DME 109.9 I-MKC Chan 36 Rwy 19. Class IE. LOM KENZY NDB.

COMM/NAV/WEATHER REMARKS: Interference from FM radio station may affect communication in the immediate vicinity of arpt. Freq 121.5 not avbl at twr or FSS.

KANSAS CITY INTL (MCI)(KMCI) 15 NW UTC-6(-5DT) N39°17.86' W94°42.83'

1027 B LRA Class I, ARFF Index C NOTAM FILE MCI

RWY 01L-19R: H10801X150 (CONC-GRVD) S-120, D-250, 2D-524,

2D/2D2-450 PCR 1106 R/D/W/T HIRL CL

RWY 01L: MALSR. TDZL. PAPI(P4L)—GA 3.0° TCH 78'. RVR-TMR 0.4% down.

RWY 19R: ALSF2. TDZL. PAPI(P4R)—GA 3.0° TCH 80'. RVR-TMR Rgt tfc. 0.3% up.

RWY 09-27: H9501X150 (ASPH-GRVD) S-120, D-250, 2D-465,

2D/2D2-260 PCR 646 F/B/X/T HIRL CL

RWY 09: MALSR. RVR-TR

RWY 27: MALSR. PAPI(P4L)—GA 3.0° TCH 72'. RVR-TR Rgt tfc. 0.3% down.

RWY 01R-19L: H9500X150 (CONC-GRVD) S-120, D-250, 2S-175,

2D-550, 2D/2D2-450 PCR 1107 R/B/W/T HIRL CL

RWY 01R: ALSF2. TDZL. PAPI(P4R)—GA 3.0° TCH 74'. RVR-TMR

RWY 19L: MALSR. TDZL. RVR-TMR 0.6% up.

RUNWAY DECLARED DISTANCE INFORMATION

RWY 01L:TORA-10801 TODA-10801 ASDA-10801 LDA-10801

RWY 01R:TORA-9500 TODA-9500 ASDA-9500 LDA-9500

RWY 09:TORA-9501 TODA-9501 ASDA-9501 LDA-9501

RWY 19L:TORA-9500 TODA-9500 ASDA-9500 LDA-9500

RWY 19R:TORA-10801 TODA-10801 ASDA-10801 LDA-10801

RWY 27:TORA-9501 TODA-9501 ASDA-9501 LDA-9501

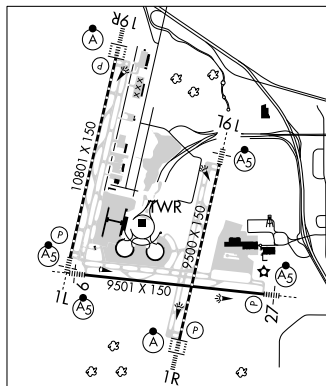
SERVICE: FUEL 100LL, JET A

NOISE: Noise abatement procedures in effect 0400-1200Z† with landing on Rwy 01L and 19L; takeoffs on Rwy 01R and 19R.

AIRPORT REMARKS: Attended continuously. Waterfowl on and invof arpt. ASSC in use. Operate transponders with altitude reporting mode and ADS-B (if equipped) enabled on all airport surfaces. Ctl twr has limited visibility on numerous gates at all 3 terminals. Windshear alert system on arpt. When using high-speed exits C4 and C6 cont til first parl twy, then use extreme care when turning in excess of 90 degrees. Design group V and VI acft rqr an arpt escort on Twy D btn Twys J and Twy C9. Twy B1 btn Twy B and FEDEX apron; cockpit over cntrln steering required. PPR to park at trml gates ctc arpt opn 816-835-4315. No acft parking on postal apron. Military acft may be charged ramp/parking fees. Twy C2 btn Twy C3 and Twy C1 wingspan restriction of 118 ft. Twy B2 clsd to acft wingspan more than 135 ft. Txl W, N1, N3, M1, M3, S1, S3, D1, and D3 wingspan restrictions of 118 ft.

AIRPORT MANAGER: 816-243-5248

KANSAS CITY
H-5C, L-10J, A
IAP, AD



CONTINUED ON NEXT PAGE

CONTINUED FROM PRECEDING PAGE

WEATHER DATA SOURCES: ASOS (816) 601-1486 LLWAS. TDWR.
 COMMUNICATIONS: D-ATIS 128.375 816-329-2725 UNICOM 122.95
 RCO 122.5 (COLUMBIA RADIO)

- Ⓡ APP CON 120.95
- INTERNATIONAL TOWER 128.2 GND CON 121.8 CLNC DEL 135.7
- Ⓡ DEP CON 124.7 (191°-009°) 123.95 (010°-190°)
- N RAMP CTRL 128.975 S RAMP CTRL 130.825
- CPDLC (LOGON KUSA)
- PDC

AIRSPACE: CLASS B See VFR Terminal Area Chart.

RADIO AIDS TO NAVIGATION: NOTAM FILE MCI.

- (H) (H) VORTACW 113.25 MCI Chan 79(Y) N39°17.12' W94°44.22' 051° 1.3 NM to fld. 1017/5E.
- ILS/DME 110.5 I-DOT Chan 42 Rwy 01L. Class IT.
- ILS/DME 110.75 I-PVL Chan 44(Y) Rwy 01R. Class IIIE.
- ILS/DME 109.7 I-RNI Chan 34 Rwy 09. Class IB.
- ILS/DME 109.55 I-DYH Chan 32(Y) Rwy 19L. Class IE.
- ILS/DME 109.1 I-PAJ Chan 28 Rwy 19R. Class IIIE.
- ILS/DME 109.7 I-UQY Chan 34 Rwy 27. Class IE.

KANSAS CITY/LEE'S SUMMIT RGNL (See LEE'S SUMMIT on page 251)

KENNETT MEML (TKX)(KTKX) 1 SE UTC-6(-5DT) N36°13.55' W90°02.20'

ST LOUIS
 H-J6, L-16H
 IAP

262 B NOTAM FILE STL

RWY 02-20: H5000X75 (CONC) S-30, D-42 MIRL

RWY 02: REIL. PAPI(P4L)—GA 3.0° TCH 42'. Tree. Rgt tfc.

RWY 20: REIL. PAPI(P4L)—GA 3.0° TCH 42'. Tree.

RWY 18-36: H3012X75 (ASPH) S-10 MIRL

RWY 36: Trees. Rgt tfc.

SERVICE: S4 FUEL 100LL, JET A LGT MIRL Rwy 18-36 and Rwy 02-20 on low ints dusk-0900Z†, to incr ints and ACTIVATE MIRL Rwy 18-36 and Rwy 02-20 and REIL Rwy 02, Rwy 20 from 0500Z†-dawn—CTAF. PAPI Rwy 02 and Rwy 20 on 24 hrs.

AIRPORT REMARKS: Attended Mon-Sat 1400-2300Z†, Sun 1900-2300Z†.

AIRPORT MANAGER: 573-888-5846

WEATHER DATA SOURCES: AWOS-3PT 119.05 (573) 888-9640.

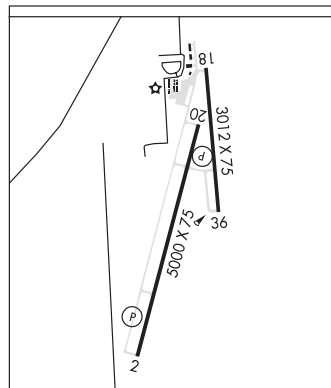
COMMUNICATIONS: CTAF/UNICOM 122.8

- Ⓡ MEMPHIS CENTER APP/DEP CON 120.075

CLEARANCE DELIVERY PHONE: For CD ctc Memphis ARTCC at 901-368-8453/8449.

RADIO AIDS TO NAVIGATION: NOTAM FILE STL.

- MALDEN (L) TACAN Chan 49 MAW (111.2) N36°33.31' W89°54.69' 194° 20.6 NM to fld. 280/3E.



KENZY N39°13.25' W94°33.86' NOTAM FILE MKC.

KANSAS CITY
 A

NDB (LOM) 344 MK 192° 6.0 NM to Kansas City Downtown/Wheeler Fld.

KINGSLEY AIRFIELD (See MILLER on page 256)