

ALLIANCE MUNI (AIA)(KAIA) 3 SE UTC-7(-6DT) N42°03.19' W102°48.23'

CHEYENNE
H-5A, L-12G
IAP, AD

3931 B Class III, ARFF Index A NOTAM FILE AIA

RWY 12-30: H9203X150 (ASPH-AFSC) S-98, D-285, 2D-158,

2D/2D2-321 PCR 39 R/B/W/T MIRL

RWY 12: REIL. VASI(V4L)—GA 3.0° TCH 39'.

RWY 30: MALSR. PAPI(P4L)—GA 3.0° TCH 53'.

RWY 17-35: H6311X75 (ASPH) S-24, D-30 PCR 39 R/B/W/T No Part 121/Part 380 Ops

RWY 08-26: H6190X75 (ASPH-PFC) S-36, D-48, 2D-80

PCR 39 R/B/W/T MIRL

RUNWAY DECLARED DISTANCE INFORMATION

RWY 08: TORA-6190 TODA-6190 ASDA-6190 LDA-6190

RWY 12: TORA-9203 TODA-9203 ASDA-9203 LDA-9203

RWY 17: TORA-6311 TODA-6311 ASDA-6311 LDA-6311

RWY 26: TORA-6190 TODA-6190 ASDA-6190 LDA-6190

RWY 30: TORA-9203 TODA-9203 ASDA-9203 LDA-9203

RWY 35: TORA-6311 TODA-6311 ASDA-6311 LDA-6311

SERVICE: S4 **FUEL** 100LL, JET A **LGT** ACTVT MALSR Rwy 30; REIL Rwy 12; VASI Rwy 12; PAPI Rwy 30; MIRL Rwy 12-30 and Rwy 08-26—CTAF.

AIRPORT REMARKS: Attended continuously. Migratory waterfowl on and invof arpt. Ultralight and glider ops on and invof arpt. Haying ops on interior of arpt during summer months. Rwy 08-26 designated calm wind. Aerial spraying ops on and invof arpt. Occasional use by acft with no radio. Back taxiing.

AIRPORT MANAGER: 308-762-4512

WEATHER DATA SOURCES: ASOS 135.075 (308) 762-1221.

COMMUNICATIONS: CTAF/UNICOM 123.0

RCO 122.3 (COLUMBUS RADIO)

Ⓡ **DENVER CENTER APP/DEP CON** 127.95

CLEARANCE DELIVERY PHONE: For CD if una to ctc on FSS freq, ctc Denver ARTCC at 303-651-4257.

RADIO AIDS TO NAVIGATION: NOTAM FILE AIA.

(VL) (DH) **VOR/DME** 111.8 AIA Chan 55 N42°03.34' W102°48.27' at fld. 3925/11E.

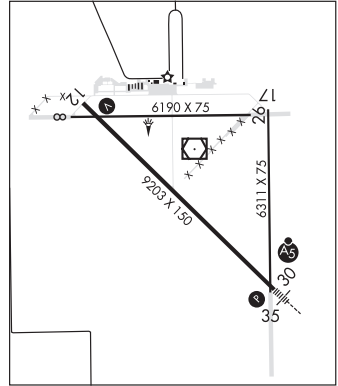
VOR unusable:

001°-058° byd 40 NM

059°-069° byd 40 NM blo 5,600'

070°-360° byd 40 NM

ILS/DME 108.35 I-BYE Chan 20(Y) Rwy 30. Class IE. Unmonitored.



ALMA

ALMA MUNI (4D9) 1 NE UTC-6(-5DT) N40°06.75' W99°20.79'

OMAHA
L-10H
IAP

2073 B NOTAM FILE OLU

RWY 17-35: H3200X60 (CONC) MIRL 0.3% up N

RWY 17: PAPI(P2L)—GA 3.0° TCH 40'.

RWY 35: PAPI(P2L)—GA 3.0° TCH 40'.

SERVICE: **FUEL** 100LL **LGT** ACTIVATE MIRL Rwy 17-35; PAPI Rwy 17 and Rwy 35—CTAF. Beacon lgt clear and green.

AIRPORT REMARKS: Unattended. Self svc fuel avbl 24 hrs via credit card system. Segmented circle concrete in ground.

AIRPORT MANAGER: 308-470-0563

COMMUNICATIONS: CTAF 122.9

Ⓡ **DENVER CENTER APP/DEP CON** 132.7

CLEARANCE DELIVERY PHONE: For CD ctc Denver ARTCC at 303-651-4257.

