

BURLINGTON**SOUTHEAST IOWA RGNL** (BRL)(KBRL) 2 SW UTC-6(-5DT) N40°46.98' W91°07.54'

699 B NOTAM FILE BRL MON Airport

RWY 18-36: H5351X100 (CONC-GRVD) S-65, D-90 PCN 30 R/C/X/T

HIRL

RWY 18: REIL. PAPI(P4L)—GA 3.0° TCH 40'. Trees. Rgt tfc.**RWY 36:** MALSR. Tree.**RWY 12-30:** H5351X100 (CONC-GRVD) S-37, D-58 PCN 24 R/C/X/T

MIRL

RWY 12: REIL. VASI(V4L)—GA 3.0° TCH 39'. Rgt tfc.**RWY 30:** REIL. PAPI(P4L)—GA 3.0° TCH 30'. Thld dspcd 500'. Road.**RUNWAY DECLARED DISTANCE INFORMATION****RWY 12:** TORA-4850 TODA-5350 ASDA-4850 LDA-5350**RWY 18:** TORA-6102 TODA-6102 ASDA-6102 LDA-6102**RWY 30:** TORA-5350 TODA-5350 ASDA-5350 LDA-4850**RWY 36:** TORA-6102 TODA-6102 ASDA-6102 LDA-6102**SERVICE:** S4 FUEL 100LL, JET A LGT ACTVT MALSR Rwy 36; REIL Rws 12, 18 and 30; VASI Rwy 12; PAPI Rwy 18 and 30; MIRL Rwy 12-30; HIRL Rwy 18-36—CTAF.**AIRPORT REMARKS:** Attended 1300-0100Z±. Self svc fuel avbl n end of apron. Sfc cond unmnt 0100-1200Z±. Line of sight NA btn Rwy 12 & 36. Rwy 12-30 btn 500 ft w of Rwy 18-36 and Rwy 18-36 grade 1.0 pct up SE. Rwy 36 calm wind rwy.**AIRPORT MANAGER:** 319-754-1414**WEATHER DATA SOURCES:** ASOS 118.025 (319) 752-6246.**COMMUNICATIONS:** CTAF/UNICOM 123.0

BURLINGTON RCO 122.2 (FORT DODGE RADIO)

® CHICAGO CENTER APP/DEP CON 135.6

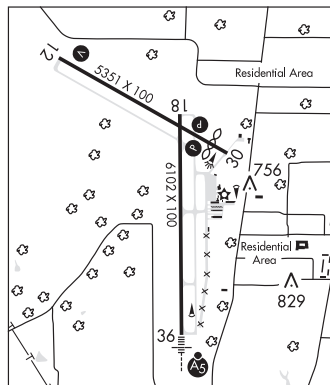
CLEARANCE DELIVERY PHONE: For CD if una to ctc on FSS freq, ctc Chicago ARTCC at 630-906-8921.**AIRSPACE:** CLASS E.**RADIO AIDS TO NAVIGATION:** NOTAM FILE BRL.**BURLINGTON (VL) (L) VOR/DME** 115.55 BRL Chan 102(Y) N40°43.41' W90°55.55' 286° 9.8 NM to fld. 727/5E.

DME unusable:

190°-210° byd 35 NM blo 3,500'

BURNS NDB (LOMW) 390 BR N40°39.26' W91°07.39' 358° 7.7 NM to fld. 574/1E.

ILS 108.9 I-BRL Rwy 36. Class IB. LOM BURNS NDB. Unmonitored.

**CHICAGO****H-5D, L-27B****IAP, AD****BURNS** N40°39.26' W91°07.39' NOTAM FILE BRL.**NDB (LOMW)** 390 BR 358° 7.7 NM to Southeast Iowa Rgnl. 574/1E.