

**BELOIT**

**MORITZ MEML** (K61) 1 NW UTC-6(-5DT) N39°28.34' W98°07.70'

**WICHITA**  
L-10H  
IAP

1418 B NOTAM FILE ICT

**RWY 17-35:** H4200X75 (CONC) S-30, D-30 PCN 11 R/C/X/U MIRL

**RWY 17:** PAPI(P2L)—GA 4.0° TCH 40'. Thld dsplcd 181'. Road.

**RWY 35:** PAPI(P2L)—GA 3.0° TCH 40'. Pole.

**RWY 04-22:** 2340X120 (TURF)

**RWY 04:** Pole.

**RUNWAY DECLARED DISTANCE INFORMATION**

**RWY 17:** TORA-4200 TODA-4200 ASDA-4200 LDA-4018

**RWY 35:** TORA-4200 TODA-4200 ASDA-4200 LDA-4200

**SERVICE:** S4 **FUEL** 100LL, JET A **LGT ACTVT** MIRL 17-35; PAPI Rwy 17 and 35—CTAF.

**AIRPORT REMARKS:** Attended Mon-Sat 1400-0000Z. Fuel avbl H24 with credit card; svc aft hr - amgr. Glider ops on arpt. Rdo ctl ops on and invof aprt; wkend and hol. Rwy 04-22 red and white L mkr with reflector raised panels.

**AIRPORT MANAGER:** 785-738-7437

**WEATHER DATA SOURCES:** AWOS-3PT 118.225 (785) 378-4173.

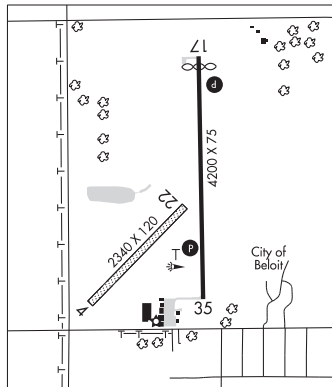
**COMMUNICATIONS:** CTAF/UNICOM 122.8

Ⓡ **KANSAS CITY CENTER APP/DEP CON** 134.9

**CLEARANCE DELIVERY PHONE:** For CD ctc Kansas City ARTCC at 913-254-8508.

**RADIO AIDS TO NAVIGATION:** NOTAM FILE ICT.

**MANKATO (L) TACAN** Chan 35 **TKO** (109.8) N39°48.38' W98°15.60' 153° 20.9 NM to fld. 1880/10E.



**BENTON**

**LLOYD STEARMAN FLD** (1K1) 1 SW UTC-6(-5DT) N37°46.47' W97°06.79'

**WICHITA**  
H-5C, L-101, 15D  
IAP

1364 B NOTAM FILE ICT

**RWY 17-35:** H5106X75 (ASPH) HIRL 0.3% up N

**RWY 17:** PAPI(P2L)—GA 3.0° TCH 33'. Thld dsplcd 242'. Trees. Rgt tfc.

**RWY 35:** Hangar.

**SERVICE:** **FUEL** 100LL, JET A+

**AIRPORT REMARKS:** Unattended. 100LL 24 hr self serve. Jet A+ req 24 hrs in adv. Ultralight acft PPR. Unctld vehicle tfc invof hangars and on twys. Back tax on rwy when able. 70 ft wide conc twy turn off midfield. Twin and lrg back taxi on rwy.

**AIRPORT MANAGER:** 316-648-0132

**WEATHER DATA SOURCES:** AWOS-2 118.3 (316) 530-6004.

**COMMUNICATIONS:** CTAF/UNICOM 123.075

Ⓡ **WICHITA APP/DEP CON** 134.8

**CLNC DEL** 125.0

**CLEARANCE DELIVERY PHONE:** For CD ctc Wichita Apch at 316-350-1520.

**RADIO AIDS TO NAVIGATION:** NOTAM FILE ICT.

**WICHITA (H) (H) VORTACW** 113.8 ICT Chan 85 N37°44.72' W97°35.03' 078° 22.5 NM to fld. 1472/7E.

**TACAN AZIMUTH** unusable:

025°-035° blo 4,000'

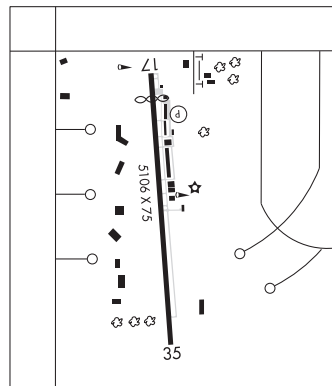
040°-055° byd 20 NM

147°-159° blo 4,900'

**VOR** unusable:

025°-035° blo 4,000'

147°-159° blo 4,400'



**BILOY** N39°07.22' W95°41.23' NOTAM FILE TOP.

**KANSAS CITY**  
L-101

**NDB (MHW/LOM)** 521 TO 131° 4.3 NM to Philip Billard Muni. 921/5E. NDB unmonitored.