

**NEW BEDFORD RGNL** (EWB)(KEWB) 2 NW UTC-5(-4DT) N41°40.59' W70°57.47'

NEW YORK

79 B LRA Class IV, ARFF Index A NOTAM FILE EWB

H-10J, 11D, 12K, L-33D

**RWY 05-23:** H5400X150 (ASPH-GRVD) S-30, D-108, 2S-137, 2D-195 PCR 810 F/A/X/T HIRL 0.3% up NE No Part 121/Part 380 Ops

**RWY 05:** MALS. RVR-T Tree.**RWY 23:** MALS. PAPI(P4L)—GA 3.0° TCH 46'. RVR-R Thld dsplcd 400'. Tree.

**RWY 14-32:** H5002X75 (ASPH) S-33, D-48, 2D-95 PCR 930 F/A/X/T MIRL No Part 121/Part 380 Ops

**RWY 14:** PAPI(P4L)—GA 3.42° TCH 50'. Tree.**RWY 32:** REIL. PAPI(P4L)—GA 3.5° TCH 50'. Trees.

**SERVICE:** S4 **FUEL** 100LL, JET A **OX** 3, 4 **LGT** When twr clsd  
**ACTIVATE** MALS. RWys 05 and Rwy 23, REIL Rwy 32, HIRL Rwy 05-23, MIRL Rwy 14-32—CTAF. PAPI Rwy 14, Rwy 23 and Rwy 32 ops 24 hrs.

**AIRPORT REMARKS:** Attended 1100-0400Z†. Birds and wildlife on and invof arpt. Rwy 05-23 and Rwy 14-32, 90 day PPR for unsked ACR ops grt than 30 pax seats—call amgr. Twys A1 and A2 for air carrier acft only. Ldg fees for acft ovr 3,000 lbs. Flight Notification Service (ADCUS) available.

**AIRPORT MANAGER:** 508-991-6161**WEATHER DATA SOURCES:** ASOS 126.85 (508) 992-0195. LAWRS.**COMMUNICATIONS:** CTAF 118.1 ATIS 126.85 (508) 994-6277 **UNICOM** 122.95

Ⓡ **PROVIDENCE APP/DEP CON** 128.7 (Sun-Fri 1030-0530Z†, Sat 1030-0500Z†) other times ctc

**BOSTON CENTER APP/DEP CON** 124.85**TOWER** 118.1 (1130-0300Z†) **GND CON** 121.9**CLEARANCE DELIVERY PHONE:** For CD when Apch clsd ctc Boston ARTCC at 603-879-6859.**AIRSPACE:** CLASS D svc 1130-0300Z†; other times CLASS G.**RADIO AIDS TO NAVIGATION:** NOTAM FILE PVD.

**PROVIDENCE (H) (DH) VOR/DME** 115.6 PVD Chan 103 N41°43.46' W71°25.78' 112° 21.4 NM to fld. 49/14W.

VOR unusable:

085°-105° byd 12 NM blo 5,500'

085°-105° byd 8 NM blo 3,000'

106°-294° byd 30 NM blo 3,000'

295°-330° byd 30 NM blo 6,000'

331°-084° byd 30 NM blo 3,000'

DME unusable:

085°-105° byd 12 NM blo 5,500'

085°-105° byd 8 NM blo 3,000'

106°-152° byd 11 NM blo 2,000'

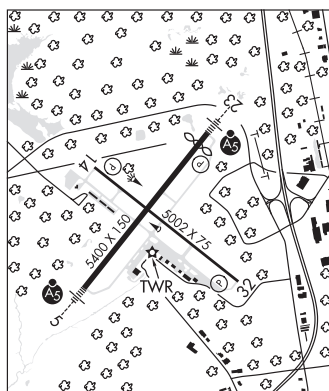
106°-152° byd 20 NM blo 4,000'

153°-294° byd 30 NM blo 3,000'

295°-330° byd 30 NM blo 6,000'

331°-084° byd 30 NM blo 3,000'

**ILS/DME** 109.7 I-EWB Chan 34 Rwy 05. Unmonitored when ATCT clsd. Autopilot cpd apch blw 470' NA. Localizer backcourse unusable 15° left and r of course; byd 12 NM. Backcourse DME unusable 15° left and r of course; byd 12 NM.

**NEWBURYPORT****PLUM ISLAND** (2B2) 1 SE UTC-5(-4DT) N42°47.72' W70°50.37'

NEW YORK

11 NOTAM FILE BDR

**RWY 14-32:** 2300X100 (TURF)**RWY 14:** Trees.**RWY 32:** Trees.**RWY 10-28:** H2105X50 (ASPH) S-8**RWY 10:** Trees.**RWY 28:** Thld dsplcd 300'. Fence.**SERVICE:** S4 **FUEL** 100LL

**AIRPORT REMARKS:** Attended Apr-Sep 1300-2300Z†. Attended irregularly Oct-Mar. Wildlife invof arpt. No touch and go allowed. Ctc mgr for all arpt use reqs. Owner does not oversee ops.

**AIRPORT MANAGER:** 978-463-4222**COMMUNICATIONS:** CTAF/UNICOM 123.0

Ⓡ **BOSTON APP/DEP CON** 124.4

**CLEARANCE DELIVERY PHONE:** For CD ctc Boston Apch at 603-594-5552.