

**PEASE** N43°05.07' W70°49.92' NOTAM FILE PSM.  
**(L) DME** 116.5 PSM Chan 112 at Portsmouth Intl at Pease. 108.  
 DME unusable:  
 029°-071° byd 35 NM blo 2,500'  
 080°-085° byd 35 NM blo 2,500'  
 115°-120° byd 37 NM blo 2,500'  
 190°-205° byd 35 NM blo 2,500'  
 225°-240° byd 25 NM blo 2,500'

**NEW YORK**  
**H-11D, 12K, L-32H, 33D**

**PLYMOUTH MUNI** (1P1) 3 NW UTC-5(-4DT) N43°46.70' W71°45.23'  
 506 NOTAM FILE BGR  
**RWY 12-30:** 2347X90 (TURF)  
**RWY 12:** Road.  
**RWY 30:** Thld dsplcd 298'. Road.

**NEW YORK**

**AIRPORT REMARKS:** Attended irregularly, call 603-536-5818. Wildlife on and invof arpt. Ultralight and paraglider act on and invof arpt. Rwy 12-30 strip soft in spring, not maintained in winter but open to ski craft. Please call ahead. Nmrs non-radio equipment acct operating fm arpt. Hvy pwrd prcht and wt shift cti acct act only in R tfc blw 400' AGL for Rwy 12. 1161' MSL mountain 1.5 NM N of Rwy 30 L of cntrln. Rwy 12-30 edges and ends mkd by yellow cones. Rwy 12 & 30 dthrs mkd by two yellow cones aligned perpendicular to each rwy edge. +3' drainage swales lctd 15' from rwy edge, both sides of rwy bngng at midfield then W for 700'.

**AIRPORT MANAGER:** 603-536-5818  
**WEATHER DATA SOURCES:** AWOS-3 118.45 (603) 536-1698.  
**COMMUNICATIONS:** CTAF/UNICOM 122.8  
**CLEARANCE DELIVERY PHONE:** For CD ctc Boston ARTCC at 603-879-6859.

**PORTSMOUTH INTL AT PEASE** (PSM)(KPSM) P (ANG) 1 W UTC-5(-4DT) N43°04.68'  
 W70°49.40'

**NEW YORK**  
**H-11D, 12K, L-32H, 33D**  
**IAP, AD**

100 B TPA—See Remarks LRA Class I, ARFF Index B NOTAM FILE PSM

**RWY 16-34:** H11322X150 (ASPH-CONC-GRVD) S-120, D-250, 2D-550, 2D/2D2-1120 PCR 430 F/A/X/T HIRL  
**RWY 16:** MALSR. PAPI(P4L)—GA 3.0° TCH 72'. RVR-T Thld dsplcd 803'. Trees. Rgt tfc. 0.3% down.  
**RWY 34:** MALSR. PAPI(P4L)—GA 3.0° TCH 80'. RVR-T

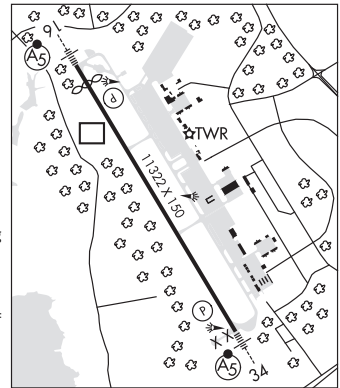
**RUNWAY DECLARED DISTANCE INFORMATION**

**RWY 16:** TORA-11321 TODA-11321 ASDA-11321 LDA-10518  
**RWY 34:** TORA-11321 TODA-11321 ASDA-11321 LDA-11321  
**SERVICE:** S4 FUEL 100LL, JET A, J8 OX 3, 4 JASU (A/M 32A-86) 9(AM32-95) 5(MA-1A) FUEL J8(Mil) (avbl at ANG 603-430-2459) A, A+ (C603-812-5502; overnight C603-812-5502) (NC-100LL)  
**FLUID PRESAIR** De-Ice LHOX OIL O-148 SOAP; RQR 48 HR processing time. **TRAN ALERT** Maint and parts support extremely ltd. No drag chute repack. Nml hr 1200-2100Z† Mon-Fri, exc hol.

**NOISE:** Noise sensitive areas off both end of rwy. Avoid close in base legs/short apchs. On dep maintain rwy hdg to 1100' MSL or the end of the rwy (whichever occurs last) prior to turning.

**AIRPORT REMARKS:** Attended continuously. Birds on and invof arpt. Turbulence AER 34 in strong cross winds. 200' blast pad each rwy end.

Rwy 34 is preferred when tail wind component is less than 5 kts. Rwy 16 is preferred for tkf btn 0300-1159Z†, when tail wind component is 5 kts or less. All inbnd acct with hazardous cargo info call twr 60 NM out. Customs 24x7x365 customs clearing availability. Stnd ofc hrs Mon-Fri 1400-2130Z†. Customs must be arranged in advance at 603-422-0910. Intl arr must arrange for gnd handling prior to arr. FBO 603-430-1111/128.825 ARINC. No practice low apch or touch and go ldg 0400-1200Z† for lcl based acct and 0200-1200Z† for tran acct or before 1700Z† Sun for all acct. Dur snow removal ops PPR 15 minutes on 128.4 and no practice low apch or touch and go ldg. On other than a published IAP arr acct should establish themselves on final apch at least 2 NM from the rwy thld at a minimum of 700' MSL. Littlebrook Airpark lctd 052° 4.4 NM, TPA-1130' MSL. Fly downwind leg no closer than 1/2 mile from rwy. Rectangular TPA-1600(1500), overhead TPA-2100(2000), lgt acct 1100(1000). Rwy 16 fst 600' conc-grooved. No 180° turns for acct over 12,500 lbs GWT on asph portion of Rwy 16-34. Rwy 16-34 double faced distance markers both sides of rwy at 1000' intervals. Rwy 16-34 edge lghts are 24" tall, 85' from cntrln. Caution: Height group 1 WCH 54'. Index E ARFF capability avbl 24/7. 157 ARW is fully opr KC46 Base.



**AIRPORT MANAGER:** 603-766-9238  
**WEATHER DATA SOURCES:** ASOS USAF AN/FMQ-19.  
**COMMUNICATIONS:** ATIS 132.05 603-334-6070 UNICOM 122.95  
**® BOSTON APP/DEP CON** 125.05  
**TOWER** 128.4 **GND CON** 120.95

CONTINUED ON NEXT PAGE

# NEW HAMPSHIRE

## CONTINUED FROM PRECEDING PAGE

**AIRSPACE: CLASS D.**

**RADIO AIDS TO NAVIGATION:** NOTAM FILE PSM.

**PEASE (L) DME** 116.5 PSM Chan 112 N43°05.07' W70°49.92' at fld. 108.

DME unusable:

029°-071° byd 35 NM blo 2,500'

080°-085° byd 35 NM blo 2,500'

115°-120° byd 37 NM blo 2,500'

190°-205° byd 35 NM blo 2,500'

225°-240° byd 25 NM blo 2,500'

**ILS 110.1 I-PGQ** Rwy 16. Class IA.

**ILS 110.1 I-PSM** Rwy 34. Class IB.

**ASR/PAR**

## ROCHESTER

**SKYHAVEN** (DAW)(KDAW) 3 SE UTC-5(-4DT) N43°17.05' W70°55.77'

**NEW YORK**

322 B TPA-1122(800) NOTAM FILE DAW

**L-32H**

**RWY 15-33:** H4201X75 (ASPH) S-30 MIRL 0.5% up SE

**IAP**

**RWY 15:** REIL. Trees.

**RWY 33:** ODALS. PAPI(P4L)—GA 3.0° TCH 43'. Rgt tfc.

**SERVICE:** S4 FUEL 100LL LGT Bcn lctd 3000 ft NW of arpt. ACTVT

ODALS Rwy 33; REIL Rwy 15; PAPI Rwy 33; MIRL Rwy 15-33; wind cone lgt—CTAF.

**AIRPORT REMARKS:** Attended Mon-Fri 1230-2100Z, exc hols. Deer on & invof arpt aft SS. Ultralight; antique & non-radio tfc in good wx. Self svc 100LL avbl 24 hrs with credit card. Rwy 33 dsngd calm wind rwy.

**AIRPORT MANAGER:** 603-766-9238

**WEATHER DATA SOURCES:** ASOS 135.275 (603) 332-7814.

**COMMUNICATIONS:** CTAF/UNICOM 122.7

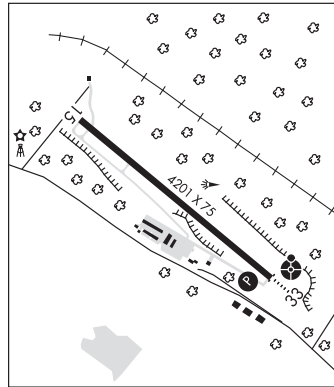
Ⓡ **BOSTON APP/DEP CON** 125.05

**CLEARANCE DELIVERY PHONE:** For CD ctc Boston Apch at 603-594-5552.

**RADIO AIDS TO NAVIGATION:** NOTAM FILE BGR.

**ROLLINS NDB (MHW)** 260 ESG N43°13.21'

W70°49.70' 327° 5.9 NM to fld. 72/16W.



**ROLLINS** N43°13.21' W70°49.70' NOTAM FILE BGR.

**NEW YORK**

**NDB (MHW)** 260 ESG 168° 5.2 NM to Seacoast Airfield. 72/16W.

**L-32H, 33D**

**SKYHAVEN** (See ROCHESTER on page 156)