

**AEROFLEX/ANDOVER** (See ANDOVER on page 158)

**ALEXANDRIA** (See PITTSTOWN on page 175)

**ANDOVER**

**AEROFLEX/ANDOVER** (12N) 3 N UTC-5(-4DT) N41°00.52' W74°44.28'

**NEW YORK**  
L-33A, 34H  
IAP

583 B NOTAM FILE 12N

**RWY 03-21:** H1981X50 (ASPH) MIRL

**RWY 03:** Trees. Rgt tfc.

**RWY 21:** Tree.

**SERVICE:** S4 **FUEL** 100LL **LGT** ACTVT MIRL **Rwy 03-21**—CTAF.

**NOISE:** Noise abatement procedures in effect. Ctc amgr 973-786-6350.

**AIRPORT REMARKS:** Attended Tues-Sun 1400-2200Z±. Deer and birds on and in/ovf aprt. Parallel turf rwy restricted use only. No touch and go ldrs. PPR required for night transients ctc amgr 973-786-5100. Avoid overflying Lake Lenape while on downwind. Arpt rstd to apch Category A acft only. Rwy 03-21 lakes at both apch ends. Dirt svc road to trml area in front of Rwy 03 thld.

**AIRPORT MANAGER:** 973-786-6350

**WEATHER DATA SOURCES:** ASOS (609) 325-2295

**COMMUNICATIONS:** CTAF/UNICOM 122.8

Ⓡ **NEWARK APP/DEP CON** 123.775

**CLEARANCE DELIVERY PHONE:** For CD ctc Newark Apch at 800-645-3206.

**RADIO AIDS TO NAVIGATION:** NOTAM FILE MIV.

**STILLWATER (L) (L) VORW/DME** 109.6 STW Chan 33 N40°59.75' W74°52.14' 094° 6.0 NM to fld. 920/11W.

DME unusable:

089°-099° within 12 NM blo 10,000'

210°-320° byd 30 NM blo 4,000'

**HELIPAD H1:** H20X15 (ASPH)

**HELIPAD H2:** H20X15 (ASPH)

**ATLANTIC CITY INTL** (ACY)(KACY) P (ANG) 9 NW UTC-5(-4DT) N39°27.45' W74°34.63'

**WASHINGTON**  
H-101, 121, L-34G  
IAP, AD

75 B Class I, ARFF Index C NOTAM FILE ACY

**RWY 13-31:** H10001X150 (ASPH-GRVD) S-120, D-250, 2S-152, 2D-550, 2D/2D2-1120 PCR 601 F/A/X/T HIRL CL

**RWY 13:** MALSR. TDZL. PAPI(P4L)—GA 3.0° TCH 71'. RVR-TR Tree.

**RWY 31:** REIL. PAPI(P4L)—GA 3.0° TCH 69'. RVR-TR Tree.

**RWY 04-22:** H6145X150 (ASPH-CONC-GRVD) S-120, D-161, 2S-175, 2D-278, 2D/2D2-682 PCR 480 R/B/W/T HIRL

**RWY 04:** PAPI(P4L)—GA 3.0° TCH 50'. Tree.

**RWY 22:** VASI(V4L)—GA 3.0° TCH 51'. Tree.

**LAND AND HOLD-SHORT OPERATIONS**

LDG RWY	HOLD-SHORT POINT	AVBL LDG DIST
RWY 04	13-31	3550
RWY 13	04-22	3600
RWY 31	04-22	5750

**RUNWAY DECLARED DISTANCE INFORMATION**

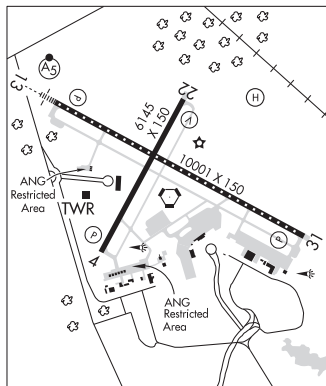
<b>RWY 04:</b> TORA-6145 TODA-6145 ASDA-6145 LDA-6145
<b>RWY 13:</b> TORA-10001 TODA-10001 ASDA-10001 LDA-10001
<b>RWY 22:</b> TORA-6145 TODA-6145 ASDA-6145 LDA-6145
<b>RWY 31:</b> TORA-10001 TODA-10001 ASDA-10001 LDA-10001

**ARRESTING GEAR/SYSTEM**

**RWY 13** BAK-14 BAK-12B (B) (1600') BAK-14 BAK-12B (B) (1600')  
**RWY 31**

**SERVICE:** S3 **FUEL** 100LL, JET A, A++ **OX 3** **MILITARY**— **A-GEAR** Avoid centerline lgt dur cable engagement to prevent tailhook bounce. **FUEL** A++ (MIL) (NC-100LL, A) **OIL** JOAP(Mil) **TRAN ALERT** Ltd maint and prk.

**NOISE:** Noise abatement procs in efct ctc arpt opns at 609-645-7895 extrn 4702.



**CONTINUED ON NEXT PAGE**

