

SARATOGA SPRINGS

SARATOGA CO (5B2) 3 SW UTC-5(-4DT) N43°03.04' W73°51.70'

NEW YORK

434 B TPA-1201(767) LRA NOTAM FILE 5B2

L-32G

RWY 05-23: H4699X100 (ASPH-CONC-GRVD) S-116, D-192 PCN 46 F/A/X/T MIRL

IAP, AD

RWY 05: REIL. Trees.

RWY 23: REIL. PAPI(P2L)—GA 3.0° TCH 43'. Trees.

RWY 14-32: H4000X100 (ASPH-CONC) S-83, D-126 PCN 30 F/A/X/T MIRL

RWY 14: Trees.

RWY 32: Trees.

SERVICE: S4 **FUEL** 100LL, JET A **OX4** **LGT** ACTVT REIL Rwy 05-23; MIRL Rwy 05-23-CTAF. Rwy 14-32 rwy lgts OTS.

AIRPORT REMARKS: Attended 1230Z±-dusk. Albany ANG helicopters do touch and go ldg ops usually during dalgt hrs. Glider activity on weekends and occasionally weekdays with extensive pre-launch and after ldg ground ops on shoulders of rwy in use. Year round federally and state protected habitat for Karner Blue Butterfly, unauthorized off-pavement ops prohibited. VASI clearance plane obstruction exists on Rwy 32 due to tree height.

AIRPORT MANAGER: 518-885-5470

WEATHER DATA SOURCES: AWOS-3 132.025 (518) 884-9289.

COMMUNICATIONS: CTAF/UNICOM 123.075

Ⓡ **ALBANY APP/DEP CON** 118.05

GCO 118.125 (ALBANY CLNC DEL)

CLEARANCE DELIVERY PHONE: For CD if GCO una ctc Albany Apch at 518-862-2299.

RADIO AIDS TO NAVIGATION: NOTAM FILE BTV.

CAMBRIDGE (VL) (L) VOR/DME 115.0 CAM Chan 97 N42°59.66' W73°20.64' 293° 23.0 NM to fld. 1490/14W.

DME unusable:

040°-130° blo 9,000'

VOR unusable:

011°-021° byd 42 NM

022°-127° byd 40 NM

128°-144°

145°-160° byd 40 NM

161°-182°

183°-194° byd 40 NM

195°-205°

320°-010° byd 40 NM

SCHENECTADY CO (SCH)(KSCH) P (ANG) 3 N UTC-5(-4DT) N42°51.16' W73°55.77'

NEW YORK

378 B LRA NOTAM FILE SCH

H-11C, 12K, L-32G

RWY 04-22: H7001X150 (ASPH-GRVD) S-95, D-175, 2D-348,

2D/2D2-850 PCN 62 R/B/W/T HIRL 0.9% up NE

IAP, AD

RWY 04: MALSR. PAPI(P4L)—GA 3.0° TCH 51'. Trees.

RWY 22: PAPI(P4L)—GA 3.0° TCH 50'. Ground.

RWY 10-28: H4850X150 (ASPH-GRVD) S-55, D-134, 2S-170, 2D-218, 2D/D1-430, 2D/2D2-541, C5-559 PCN 48 F/B/Y/T MIRL

RWY 10: PAPI(P2L)—GA 4.0° TCH 50'. Thld dspcd 200'. Pole.

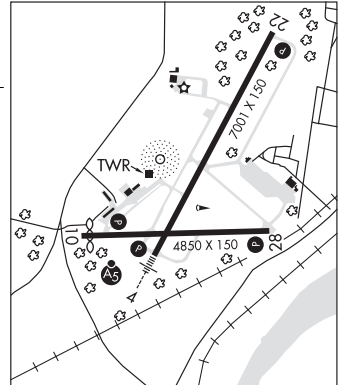
RWY 28: REIL. PAPI(P2L)—GA 3.0° TCH 50'. Trees.

SERVICE: S6 **FUEL** 100LL, JET A **OX2** **LGT** When twr clsd, ACTVT MALSR Rwy 04; PAPI Rwy 04, 10, 22 and 28; HIRL Rwy 04-22; MIRL Rwy 10-28-CTAF. **MILITARY—JASU** (A/M32A-86) (MA-1A) (AM32-95) **FUEL** A++(Mil) (NC-100LL, A) **FLUID** SP(Mil) LOX(Mil) **OIL** O-148-156(Mil).

NOISE: Noise abatement procedure in effect for large acft remaining in pattern ctc airfield manager for details.

AIRPORT REMARKS: Attended 1230-0330Z±. Birds on and invof arpt. No ultra-light opr in Class D airspace without apvl from ATCT. Military C-130 pattern opr conducted daily. 60' dropoff 150' from Rwy 28 end. No fld or braking action reports avbl between 0330Z± and 1230Z± daily. Ldg fee for itinerant multi-engine acft requesting twr svc 0330-1200Z±. Flight Notification Service (ADCUS) avbl.

AIRPORT MANAGER: (518) 399-0111



CONTINUED ON NEXT PAGE

CONTINUED FROM PRECEDING PAGE

WEATHER DATA SOURCES: AWOS-3 119.275 (518) 399-6586.

COMMUNICATIONS: CTAF 121.3 UNICOM 122.95

Ⓡ ALBANY APP/DEP CON 132.825

TOWER 121.3 (1230-0330Z† Mon-Fri; 1230-0200Z† wknds and hols; clsd Thanksgiving & Christmas; otr times by NOTAM)

GND CON 121.9

CLEARANCE DELIVERY PHONE: For CD ctc Albany Apch at 518-862-2299.

AIRSPACE: CLASS D svc 1230-0330Z† Mon-Fri; 1230-0200Z† wknds and hols; clsd Thanksgiving & Christmas; otr times by NOTAM; other times CLASS G.

RADIO AIDS TO NAVIGATION: NOTAM FILE ALB.

ALBANY (L) (L) VORTACW 115.3 ALB Chan 100 N42°44.84' W73°48.19' 332° 8.4 NM to fld. 273/13W.

VOR unusable:

045°-065° byd 11 NM
 066°-069° byd 11 NM blo 10,000'
 078°-088° byd 20 NM blo 10,000'
 109°-121°
 121°-131° byd 30 NM
 121°-131° wi 30 NM blo 9,900'
 131°-168°
 184°-189°
 226°-269° byd 29 NM blo 15,000'
 312°-315°
 333°-343°

TACAN AZIMUTH unusable:

032°-042° byd 15 NM
 164°-168°
 303°-308° byd 37 NM
 308°-333°

DME unusable:

303°-308° byd 37 NM

HUNTER NDB (MHW) 356 HEU N42°51.25' W73°56.01' at fld. 332/14W. NOTAM FILE SCH.

ILS 109.7 I-SCH Rwy 04. Class IB. Unmonitored when ATCT clsd.

COMM/NAV/WEATHER REMARKS: UNICOM use 122.95 for svc from FBO.

SCHROON LAKE (4B7) 2 N UTC-5(-4DT) N43°51.75' W73°44.43'

NEW YORK

834 NOTAM FILE BTV

L-32G

RWY 16-34: H3000X60 (ASPH) S-13

RWY 16: Thld dsplcd 100'. Road.

RWY 34: Trees.

AIRPORT REMARKS: Attended dalgt hrs. Debris from adjacent land fill is occasionally blown onto and across rwy. 25 ft dropoff 30 ft fm pavement AER 34. Recommend ldg Rwy 16, tkf Rwy 34.

AIRPORT MANAGER: 518-532-7737

COMMUNICATIONS: CTAF 122.9

CLEARANCE DELIVERY PHONE: For CD ctc Boston ARTCC at 603-879-6859.

RADIO AIDS TO NAVIGATION: NOTAM FILE BTV.

BURLINGTON (VL) (L) VORW/DME 117.5 BTV Chan 122 N44°23.83' W73°10.96' 232° 40.1 NM to fld. 417/15W.

VOR unusable:

030°-086° byd 40 NM
 075°-132° byd 30 NM blo 9,000'
 087°-097° byd 40 NM blo 9,000'
 087°-097° byd 49 NM
 098°-169° byd 40 NM
 133°-165° byd 30 NM blo 8,000'
 170°-180° byd 40 NM blo 5,800'
 170°-180° byd 47 NM
 181°-196° byd 40 NM
 244°-292° byd 40 NM
 340°-350° byd 40 NM blo 6,000'
 351°-010° byd 40 NM

DME unusable:

075°-132° byd 30 NM blo 9,000'
 133°-165° byd 30 NM blo 8,000'