

WILLIAM T PIPER MEML (See LOCK HAVEN on page 289)

WILLIAMSBURG

COVE VALLEY (6G6) 2W UTC-5(-4DT) N40°27.27' W78°14.28'

DETROIT

1156 NOTAM FILE AOO

RWY 04-22: 2750X100 (TURF)

RWY 04: Thld dspclcd 285'. Brush. Rgt tfc.

RWY 22: Thld dspclcd 286'. Brush.

SERVICE: S4

AIRPORT REMARKS: Attended Mon-Fri 1300-2200Z±, Sat-Sun irregularly. Arpt safety briefing rprd before ldg 814-832-2694.

Deer and occasional geese on and invof arpt. Turf soft during spring and after rains, no qrs when rwy is soft or snow covered. Rwy 04-22 mkd with white bdry mkr. Rwy 04 dthr mkd with white barrels.

AIRPORT MANAGER: 814-832-2694

COMMUNICATIONS: CTAF 122.9

CLEARANCE DELIVERY PHONE: For CD ctc Johnstown Apch at 814-532-5960, when Apch clsd ctc Cleveland ARTCC at 440-774-0213.

WILLIAMSPORT RGNL (IPT)(KIPT) 4E UTC-5(-4DT) N41°14.50' W76°55.31'

NEW YORK

528 B ARFF Index—See Remarks NOTAM FILE IPT

H-10H, 12J, L-30J

RWY 09-27: H6825X150 (ASPH-GRVD) S-65, D-100, 2S-127,

IAP, AD

2D-190 PCR 690 F/A/XT HIRL

RWY 09: REIL. PAPI(P4L)—GA 3.0° TCH 49'. Trees.

RWY 27: MALSR. Thld dspclcd 255'. Trees. Rgt tfc.

RWY 12-30: H4273X150 (ASPH) S-200, D-200, 2S-175, 2D-400

PCR 2230 F/C/XT MIRL

RWY 12: PAPI(P2L)—GA 3.75° TCH 45'.

RWY 30: PAPI(P2L)—GA 4.0° TCH 41'. Trees. Rgt tfc.

RUNWAY DECLARED DISTANCE INFORMATION

RWY 09: TORA-6825 TODA-6825 ASDA-6073 LDA-6073

RWY 12: TORA-4273 TODA-4273 ASDA-4273 LDA-4273

RWY 27: TORA-6825 TODA-6825 ASDA-6318 LDA-6063

RWY 30: TORA-4273 TODA-4273 ASDA-4273 LDA-4273

SERVICE: S4 FUEL 100LL, JET A OX 1 LGT When twr CLSD ACTVT

MALSR Rwy 27; REIL Rwy 09; HIRL Rwy 09-27; MIRL Rwy 12-30;

and twy lghts—CTAF. PAPI Rwsy 09, 12 and 30 oper consly. MIRL Rwy

12-30, click three times for medium intst. Rwy 09 PAPI baffled unusbl

byd 2 degs R of crs. Rwy 30 PAPI baffled unusbl byd 7 degs L of crs.

AIRPORT REMARKS: Attended Mon-Fri 0930-0100Z±, Sat-Sun

1200-0100Z±. Deer and birds on and invof arpt especially AER 27

and AER 30. Rwy and twy conds not mnt dly 2200-1200Z±. Fuel and svcs avbl 1200-0300Z±, after hrs by prior cdn

call 570-368-2651. Twy J clsd to acft with wing span over 78'. Class I, ARFF Index A. PPR 12 hrs for unsked ACR opns

with more than 30 psgr seats call amgr. Index A coverage avbl 1200-2200Z± and btn 2200-1200Z± upon req call amgr.

Index B coverage avbl upon req call amgr. Unlgt'd crane 90' AGL 0.5 miles SE AER 30 permanently. For landside access

from arpt after hrs use computerized gate system at east end or FBO apron. Cold temperature airport. Altitude correction

required at or below -13C. Ldg fee.

AIRPORT MANAGER: 570-368-2444

WEATHER DATA SOURCES: ASOS 125.225 (570) 360-5258.

COMMUNICATIONS: CTAF 119.1 UNICOM 122.95

RCO 122.2 (WILLIAMSPORT RADIO)

® **NEW YORK CENTER APP/DEP CON** 124.9

TOWER 119.1 (1130-0330Z±) **GND CON** 121.9

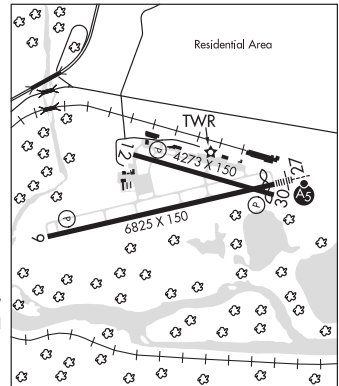
CLEARANCE DELIVERY PHONE: For CD if una to ctc on FSS freq, ctc New York ARTCC at 631-468-1425.

AIRSPACE: CLASS D svc 1130-0330Z±; other times CLASS E.

RADIO AIDS TO NAVIGATION: NOTAM FILE IPT.

(L) (L) **VOR/WME** 114.4 FQM Chan 91 N41°20.31' W76°46.49' 238° 8.8 NM to fld. 2098/9W.

ILS/DME 110.1 I-IPT Chan 38 Rwy 27. Class IB. LOC unusable byd 028° left of course. DME unusable byd 028° left of course.



WINGS FLD (See PHILADELPHIA on page 298)