

LEWISBURG

GREENBRIER VALLEY (LWB)(KLWB) 3 N UTC-5(-4DT) N37°51.50' W80°23.97'

CINCINNATI

2302 B ARFF Index—See Remarks NOTAM FILE LWB

H-10H, 12H, L-26I

RWY 04-22: H7003X150 (ASPH-GRVD) S-90, D-120, 2S-152,

IAP, AD

2D-160 PCR 360 F/D/X/T HIRL

RWY 04: MALSR.

RWY 22: REIL. PAPI(P4L)—GA 3.0° TCH 58'.

RUNWAY DECLARED DISTANCE INFORMATION

RWY 04: TORA-7003 TODA-7003 ASDA-7003 LDA-7003

RWY 22: TORA-7003 TODA-7003 ASDA-7003 LDA-7003

SERVICE: S2 FUEL 100LL, JET A LGT ACTVT MALSR Rwy 04; REIL

Rwy 22; PAPI Rwy 22; HIRL Rwy 04-22; twy lghts—CTAF.

AIRPORT REMARKS: Attended continuously. Birds and deer on and in/ovf arpt. Class I, ARFF Index B. PPR 24 hrs for unscheduled air carrier ops with more than 30 passenger seats call arpt manager 304-645-3961. ARFF Index C equipment avbl upon request. Ldg fee for all acft abv 4000 lbs. Lndg fee waived with applicable fuel purchase based on acft weight or if acft is registered in the State of West Virginia or fuel purchase with a U. S. Govt Air Card.

AIRPORT MANAGER: 304-646-7382

WEATHER DATA SOURCES: AWOS-3PT (304) 645-4533

COMMUNICATIONS: CTAF 118.9 UNICOM 122.95 ATIS 121.4

WASHINGTON CENTER APP/DEP CON 134.4

LEWISBURG TOWER 118.9 (1400-0000Z) GND CON 121.9

CLNC DEL 125.725 (when twr clsd)

AIRSPACE: CLASS D svc 1400-0000Z; other times CLASS G.

RADIO AIDS TO NAVIGATION: NOTAM FILE LWB.

(H) DME 116.05 LWB Chan 107(Y) N37°51.83' W80°23.51' at fld. 2338.

DME unusable:

095°-150°

151°-185° byd 20 NM blo 10,000'

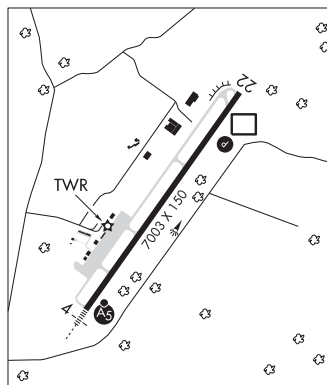
186°-196° byd 20 NM blo 7,000'

197°-094° byd 20 NM blo 10,000'

BUSHI NDB (LOM) 346 LW N37°46.94' W80°28.11' 044° 5.6 NM to fld. Autopilot cpd apch NA blw 2,770' MSL.

ILS 110.35 I-LWB Rwy 04. LOM BUSHI NDB. Autopilot cpd apch NA blw 2,770' MSL. LOC unusable 0.3 NM inbd.

COMM/NAV/WEATHER REMARKS: Use CTAF 118.9 when twr clsd. Freq 121.5 not avbl at twr. If unable to contact Washington Center on 134.4, contact Washington Center on 125.725.



LOGAN CO (6L4) 4 E UTC-5(-4DT) N37°51.34' W81°54.95'

CINCINNATI

1666 B NOTAM FILE EKN

L-26H

RWY 06-24: H3605X75 (ASPH) MIRL 0.3% up NE

IAP

RWY 06: REIL. PAPI(P2L)—GA 3.0° TCH 47'. Trees.

RWY 24: REIL. PAPI(P2L)—GA 3.0° TCH 42'. Trees.

SERVICE: S4 FUEL 100LL, JET A LGT ACTVT REIL Rwy 06 and 24; PAPI Rwy 06 and 24; MIRL Rwy 06-24—CTAF.

AIRPORT REMARKS: Attended 1400-2200Z; Deer and wildlife on and in/ovf arpt. Low Ivl C-130 mil opns in vcnty. Ck NOTAMS.

100LL fuel 24 hr self-svc. Rwy 06, 30 ft hill 800 ft from thld left. Airport access code—CTAF. Military practice rwy 1.2 miles NE of Rwy 24 end. Not charted. Wind indicator: Cntr fld windsock not ver, wind indc unrelbl. Adnl windsock at Rwy 06 and 24 ends unlgtd.

AIRPORT MANAGER: 304-752-0975

WEATHER DATA SOURCES: AWOS-3PT 119.375 (304) 752-0814.

COMMUNICATIONS: CTAF 122.9

Ⓡ CHARLESTON APP/DEP CON 119.2 (North)

INDIANAPOLIS CENTER APP/DEP CON 126.575 (South)

CLEARANCE DELIVERY PHONE: For CD ctc Charleston Apch at 304-344-5867 ext 281.

RADIO AIDS TO NAVIGATION: NOTAM FILE CRW.

CHARLESTON (H) (H) VOR/DME 117.4 HVQ Chan 121 N38°20.98' W81°46.19' 196° 30.4 NM to fld. 1099/3W.

VOR unusable:

185°-190°

240°-250°

DME unusable:

230°-240°

COMM/NAV/WEATHER REMARKS: For acft maint svcs call 304-752-0094 days, 304-946-4415 nights.

MARSHALL CO (See MOUNDSVILLE on page 401)